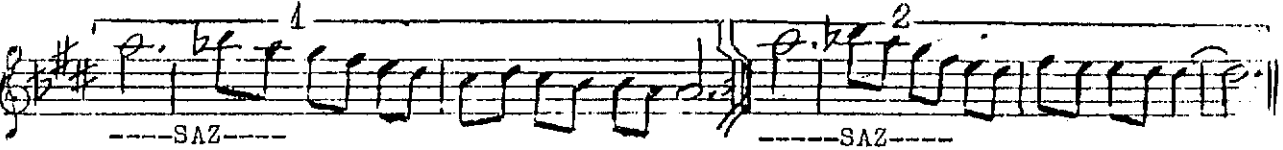
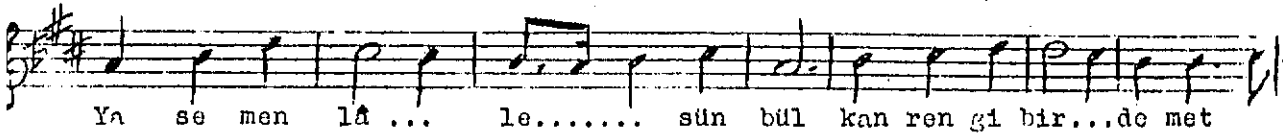
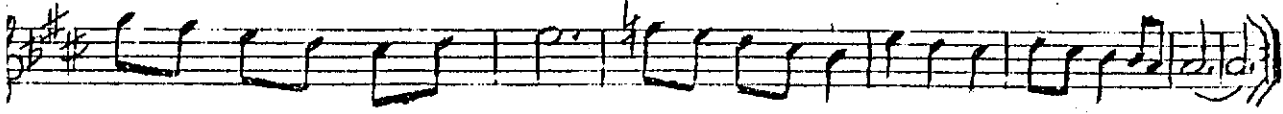
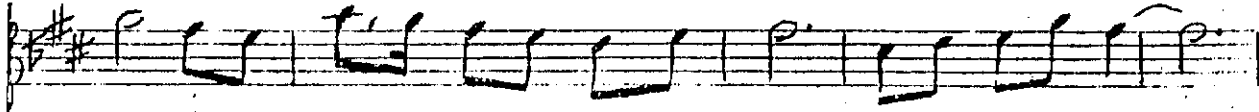
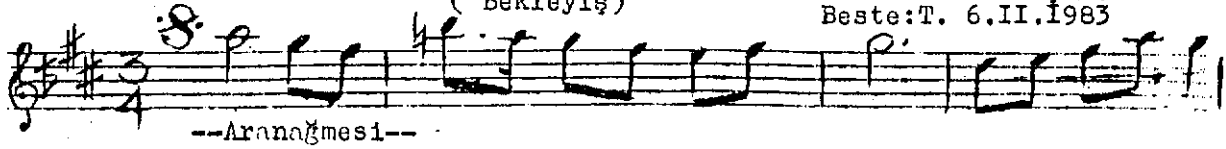


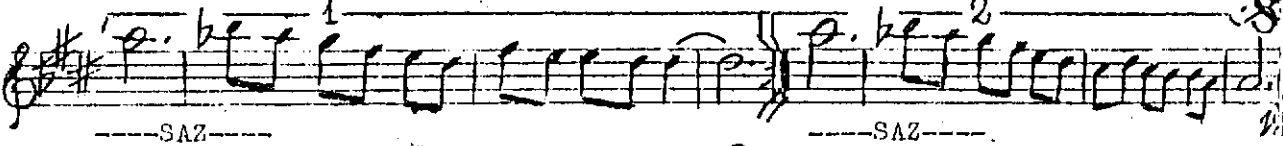
Uslû: SEMÂî

(Fantezi)
HİCAZ-UZZÂL ŞARKI
(Bekleyiş)

Müzik: NECDET DÖNMEZ
Söz : MELÂHAT ŞİDE.
Beste: T. 6.II.1983



(Meyan)



Yasemen, lâle, sünbül, I.
Kan rengi bir demet gül.
Aşk arıyan bülbul,
Tasalanma yaz gelir.

Bâzen gerçek, bâzen düş,
Dudağında bir ~~g~~ gülüş.
Gerçi mehtâb uşumüş,
Tasalanma yaz gelir.

Gecelerin sonu var, II. Dallarda ışık ve renk,
Sönmez mahşere kadar. Herşey birbirine denk.
Çözülür karanlıklar, Esrarlıdır bu âhenk,
Tasalanma yaz gelir. Tasalanma yaz gelir.