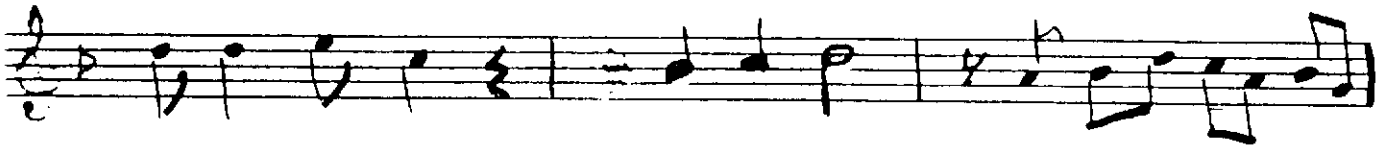
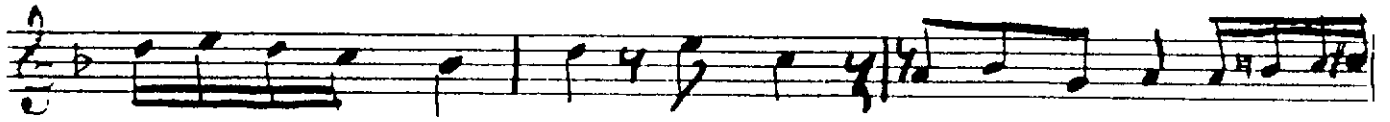


# MUHAYYER KÜRDİ ŞARKI

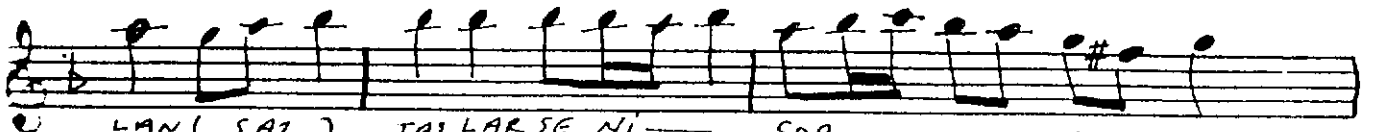
NERDESİN DİYE

SÖZ: CEMAL SAĞI  
BESTE: BAHATTİN TURANLI

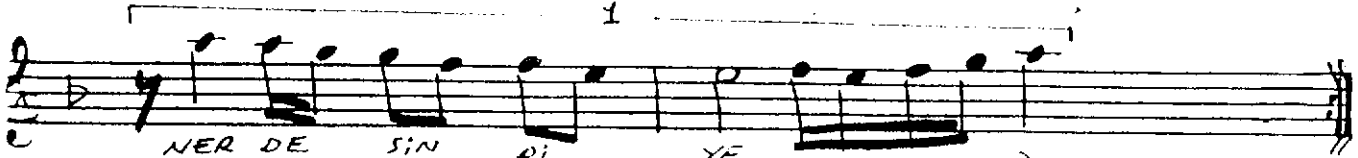
DÜYEK



YA RA LI KALBI ME HE DEF A TI—



LAN ( SAZ ) TA I LA R SE Nİ— SOR — DU —



NER DE SIN DI YE ( SAZ )



NER DE SIN DI YE ( SAZ ) GÜ LEN Dİ EİM—



AY NA LAR DA — SA TI LA — N KA I LA R SE Nİ—

# NERDESİN DİYE

- 2 -

The image shows a handwritten musical score for the song "NERDESİN DİYE". The score is written on ten staves, each with a treble clef and a key signature of one flat (B-flat). The lyrics are written below the notes. The score includes various musical notations such as notes, rests, and bar lines. There are also some markings above the notes, possibly indicating fingerings or breath marks. The lyrics are in Turkish and include the words "SOR", "DU", "NER DE", "SİN", "Dİ", "YE", "KAN", "MAĞ RUR", "HA", "LI", "ME", "U", "MUR", "SUL", "BA", "KAN", "YAŞ", "LAR", "SENİ", "GÖ", "ZÜ", "M", "DENA", "A", "KAN", "SON".

SOR — DU — NER DE SİN Dİ YE (SAZ)

YE (SAZ) HER KÖ ŞE DA SİN — DA —

KAR ŞI MA ÇI — KAN (SAZ) DER BE DE

HA LI ME U MUR — SUL BA KAN (SAZ)

MAĞ RUR HA YA — LI NE — GÖ ZÜ M — DENA —

KAN — (SAZ) YAŞ LAR SENİ SOR — DU —

NER DE SİN Dİ YE (SAZ) MAĞ RUR — HA

YA LI NE — GÖ ZÜ M DEN — A KAN (SAZ)

YAŞ LA SE Nİ — SOR — DU — NER DE

SİN Dİ YE (SAZ) YE SON