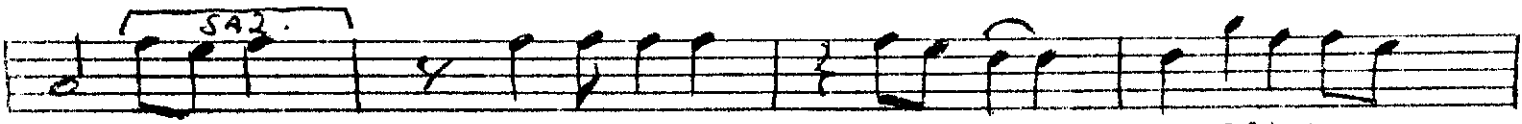


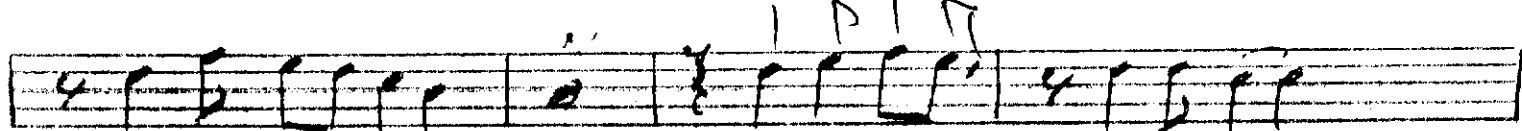
YAĞ MU - RUN - - - - - BÂNE - ŞİM - - - - - BAH A RİM - OL.



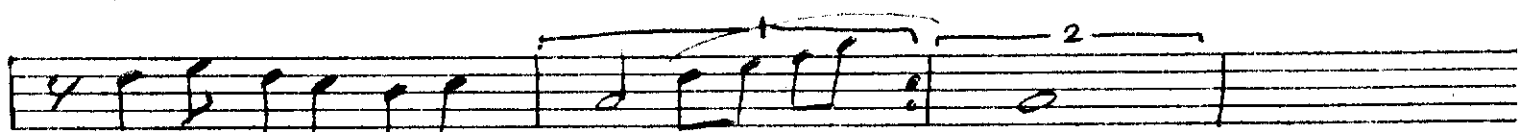
SAM KA - L BİNOE TEKE - ŞİM SEVDALIN OL



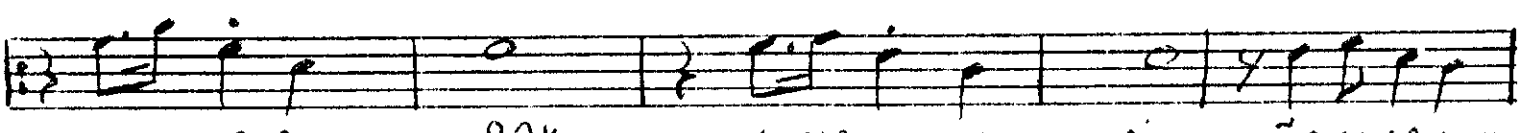
SAN - SAZ - - - - - SAZ - - - - - SAZ - - - - - GELOİ - GİN GEÇTİ GİN - -



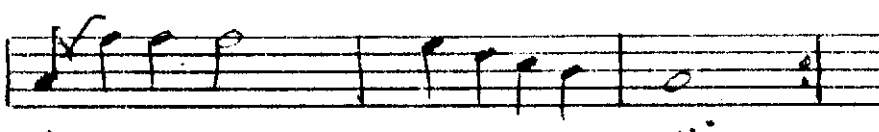
YOL LA RİN OL - - - - - SAM SEU Oİ GİN - - - - - TAP TI GİN.



A - Şİ GİN OL SAM - SAZ - - - - - SAM.



DALIM DA Bİ RAK KOPAR MA BE - Nİ ÖP OK PA KOK



LA SOL DURMA BE - Nİ

2. NEMLİ GÖZLERİNDEN AKAN YAĞI OLJAW
Bağrına bastığın kava taşo olsun
Zemîn Göğsüne yaslanıp baş olsun
Sende hep yaz olup elde kış olsun