

# YETİM SESİ

BESTE

HANENDE ENDERONİ SELAHATTİN B.

GÜLTE  
FETHİ B.



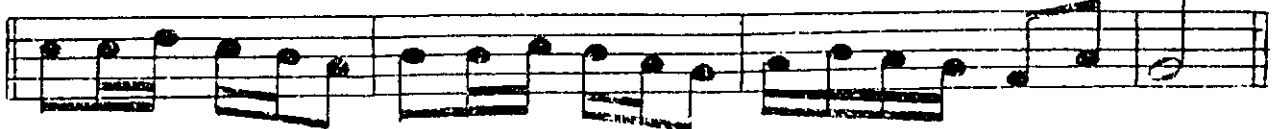
YA DIN LA HERAK ŞAM HÜ ZÜN LÜ KAL BİM



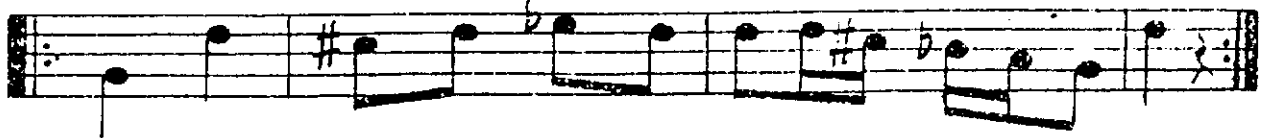
HER YE TİM KAL Bİ DE BÖY LE Mİ RAB BİM



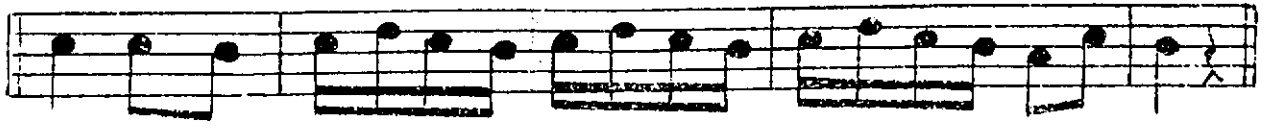
HER KE SİN KAL Bİ DE BÖY LE Mİ RAB BİM



SOL QUN BİR MEH TA BİN SÖ NÜK ŞU LE Sİ



İS YAN İ DEN BU SES BİR MA SUMSE Sİ



İS YAN İ DEN BU SES BİR MA SUMSE Sİ



KODA



Cüneyt KOSAL