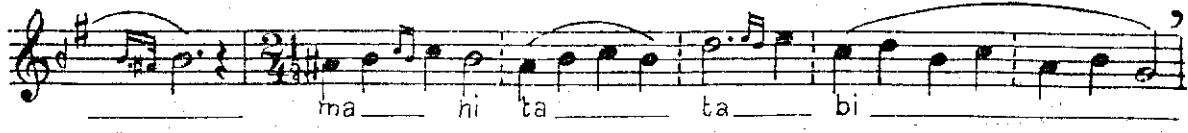
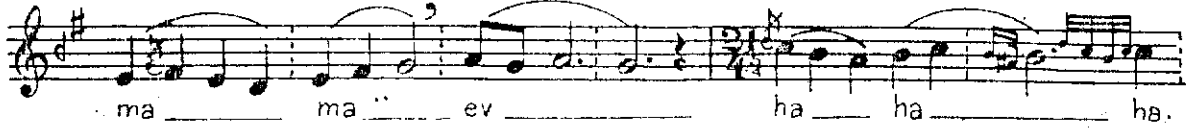
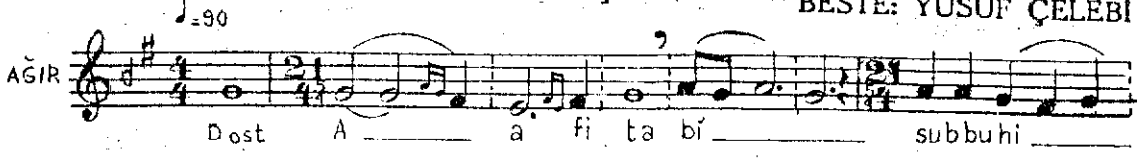


Rast Na'ti Şerif

BESTE: YUSUF ÇELEBİ





GÖFTE: NAZİM

Âfitab ı subh-i mâ evhâ Habîb-i kibriya;
Mâh-i tab i şam-i ev edna Habîb-i kibriya;
Umarım ma'zur ola evza-ı küstahanesi;
Bakma nöksan-ı Nazîme ya habîbi kibriya;
Mâhitab-ı şam-i ev edna habîb-i kibriya.