

# Bostansalâm ŞARKI SENGİN SEMÂİ

FENNİ BEYİN

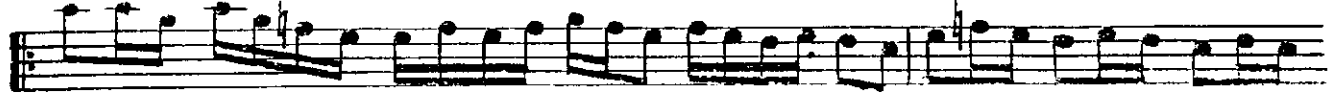
ÜP FA DE Nİ MAH RÜ MÜ SA FA



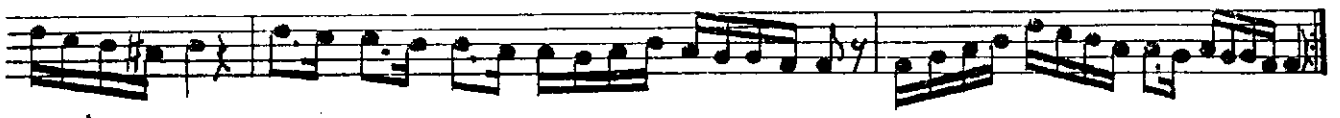
EY EY LE DİN AR TIK



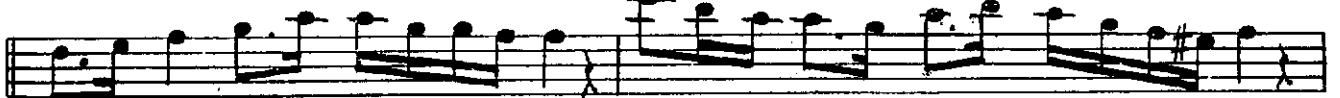
NÂ LEN DE İ HİÇ RÂ NÜ



CE MA EY EY LE DİN AR TIK



BİR AT Fİ NA ZAR DAN DA CÜ DA



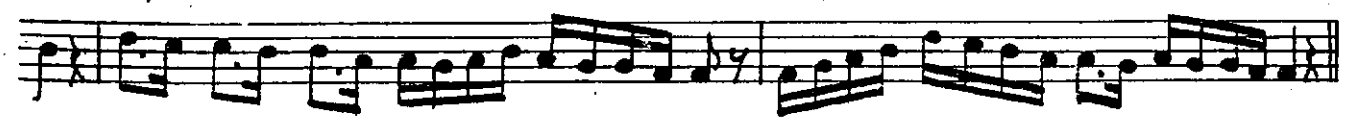
EY EY LE DİN AR TIK



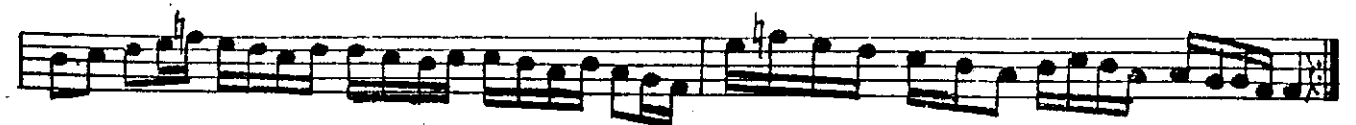
ŞÂD OL BE Nİ SEN MAH VÜ HE



BÂ EY EY LE DİN AR TIK



ARA NAMESİ



- 1 -

Üstâdeni mahrûmâ safâ eyledin artık  
Nalendei hicrânü cefâ eyledin artık  
Bir atfî nazardan da cûda eyledin artık

Nekarât

Şâd ol beni sen mahvü hebâ eyledin artık

- 2 -

Seyri gülle yâ nûşî meye kalmadı hâhiş  
Mihnetle heman ağlamadır şimdî bana iş  
Aşk ehline aşkın elemi bak ne edermiş