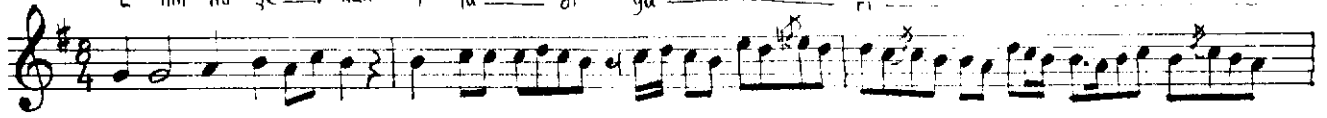


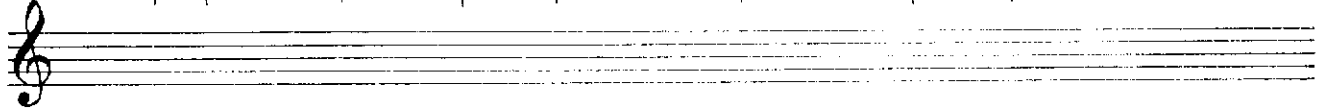
Rast makamında Kâr Hoca Ahîdül kadiri merâfî'nin

[ ♯ ]

F hin nü se—v kan i lâ— di ya— ri—

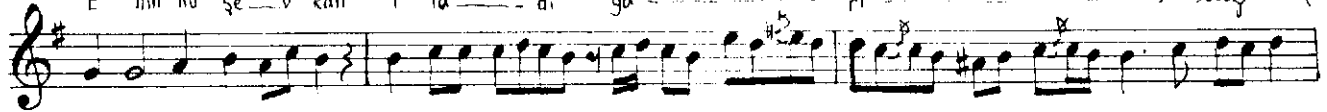
ika DÜYK

$p \quad p \quad d \quad p \quad l \quad p \quad r \quad d \quad p \quad l \quad p \quad r \quad o \quad p$  -----] ikah

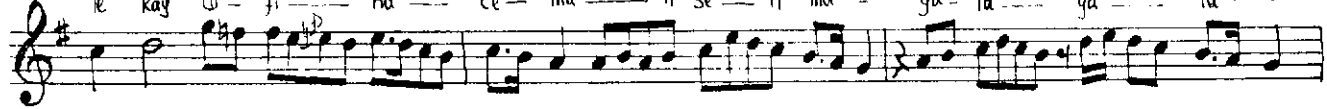


E hìn nù ɣe v kan i lâ - di ya - ri

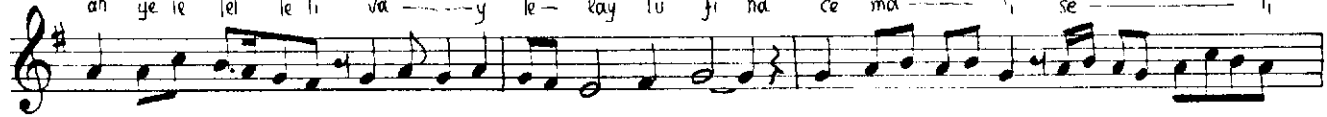
Jazy



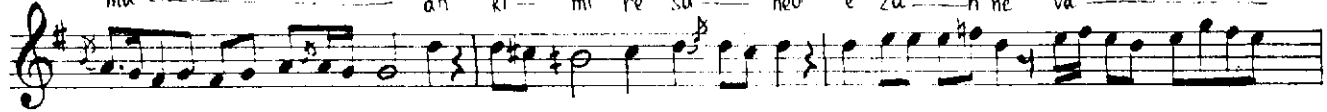
le kay ti - fi - ha - ce - ma - li se - li ma - ya - lâ - ya - lâ -



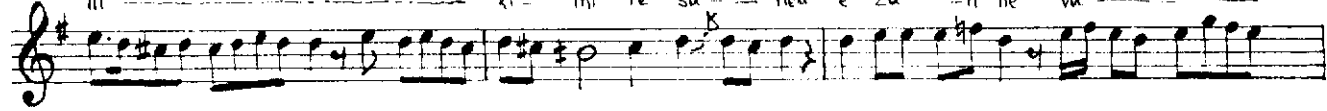
ah ye le le li va ——— y le — kay tü fi ha ce ma ——— i se ——— i



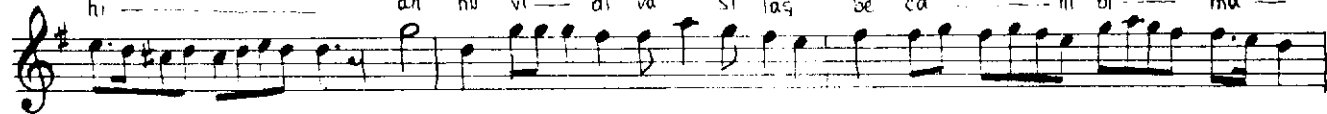
ma ah ki mi re sa ne' e za n ne va



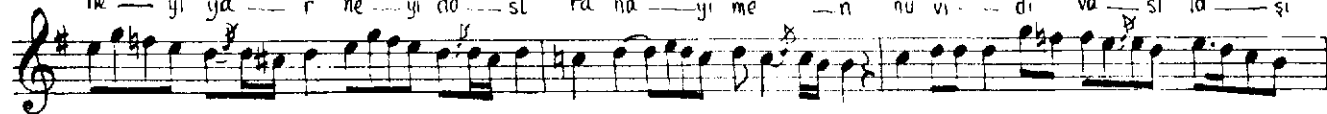
hi ..... ki mi re sa ned e za n ne va .....



hi ————— ah nü vi — di va si laş be ca ————— ni bi ————— ma —————



he — yí ya — r he — yí do — st ra na — yí me — n nǚ vi — di va — sí la — shì



be - ca - - - ni bi - - - ma ya - lâ - - - ya - - - lâ - - - ah se le 'le' - le 'li' va - - - y



nü - vi di vas laş be ca - - ni bi - - - - ma - - - - -



(Meyan)

Ne- sim be ca — ni bi se ra be ra — med ü mi — di va — sı la — ş

be — ca — ni — bi — ma — det de re dil ler ler dir ten nen ni ta — na di ri ney

det de re dil le ri le ri di ri ten nen ni ta — na di ri ney ü mi di va — sı la — ş

be — ca — ni bi — ma ya — lâ — ya — lâ — ah ye le lel le li va — y

ü — mi di vas laş be ca — ni bi — ma — (Sem)

Ehinnü şevkan ilâ diyari  
 Lâkıtü fiha cemâli selma  
 Ya lâ ya lâ ah yele lel leli vay  
 Lâkıtü fiha cemâli selma  
 Ki miresaned ezan nevahi  
 Nüvidi vaslaş becanibi ma  
 Hey yâr hey dost ranayimen  
 Nüvidi vaslaş becanibi ma  
 Ya lâ ya lâ ah yele lel leli vay  
 Nüvidi vaslaş becanibi ma

Meyanhane

Nesim becanip sera beramed  
 Ümidi vaslaş becanibi ma  
 Detttere diller ler dir ten nen ni tana dir ney  
 Ümidi vaslaş becanibi ma.