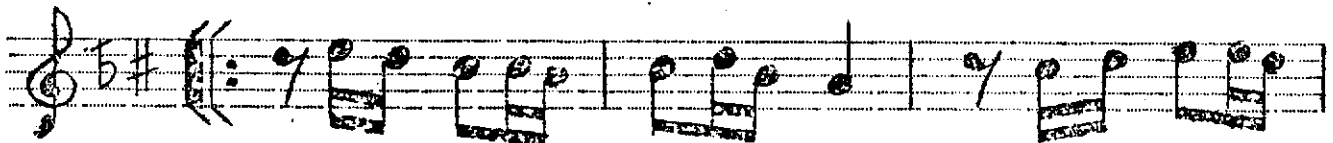
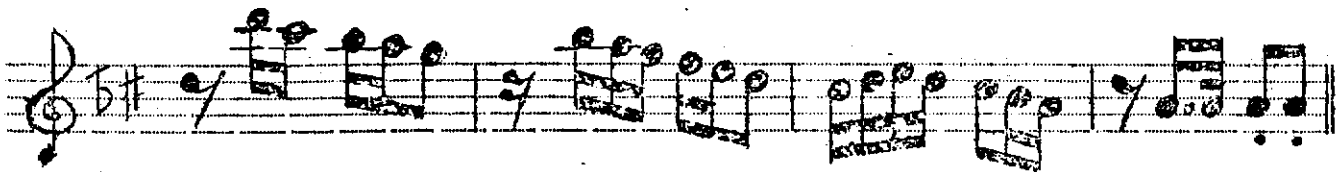
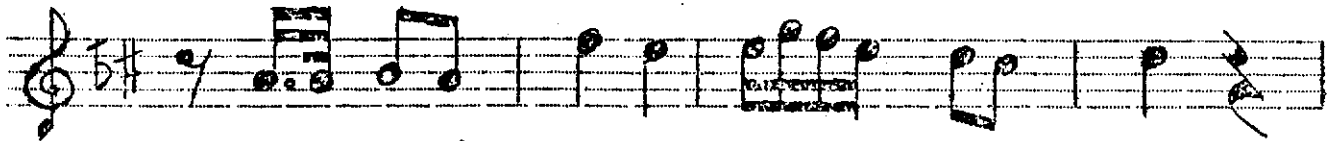


Nin Sofyan

The first staff of music is written on a single five-line staff. It begins with a treble clef, a key signature of one sharp (F#), and a time signature of 2/4. The melody starts with a quarter rest, followed by a quarter note G4, an eighth note A4, and a quarter note B4. This is followed by a half note C5, then a quarter note D5, and another quarter note E5. The staff concludes with a quarter note D5, a quarter note C5, and a final quarter note B4.

[illegible]

gök le rin mağ rur

dag la rin ki

21

(H i c a z H ü m a y ü n F a n t e z i n i n D e v a m ı)

1 2

----- S a z -----

Ne ka dar ne rin - sin - gü zel - sin bil

sen bak yor gun göz le rim

kar gın da hay ran bel ki di ri li rim

ıç sem e lin den se rin çam

ko ku lu bir tas el kay ran

1 2

----- S a z -----

Kökçü

Ufuklara yaslanmış yorgun dağlar sırayla
Çadırının üstüne doğmuş akşam yıldızı
Çıplak ayaklarının altında baygın yayla
Ey belâlı göklerin, mağrur dağların kızı.

Ne kadar nârînsin, güzelsin bilsen
Bak yorgun gözlerin kargında hayran
Belki dirilirim içsem elinden
Serin çam kokulu bir tasecik ayran.