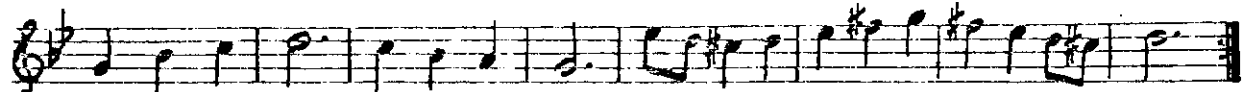
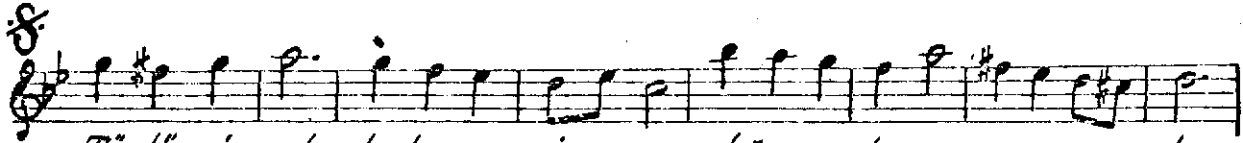


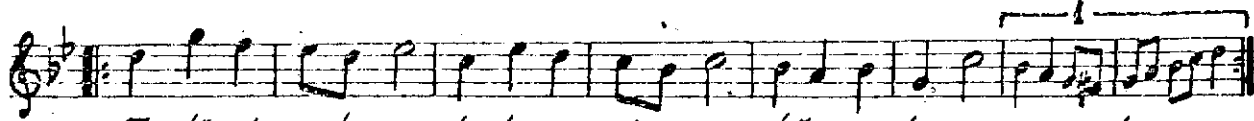
Aranâğme.



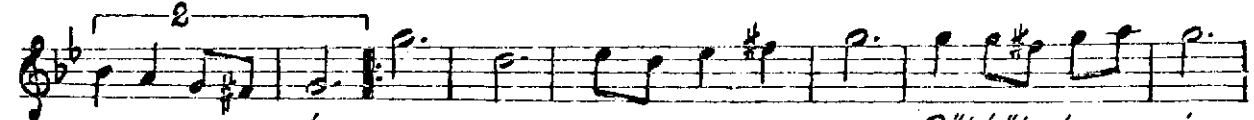
Ba har o lur ye şil le nir bah . çe ler . . bağ . . . lar



Tür lü çi çek le be ze nir . . dağ . . lar . o va . . lar



Tür lü çi çek . . le be ze nir . . dağ . . lar . o va . lar . .



o va . . lar . . . SAZ Bül bül le rin



se sin de her nağ me aşk . çağ lar aşk çağ lar

Bahar olur yeşillenir bahçeler bağlar
Türlü çiçekle bezenir dağlar ovalar
Bülbüllerin sesinde her nağme aşk çağlar
Türlü çiçekle bezenir dağlar ovalar.