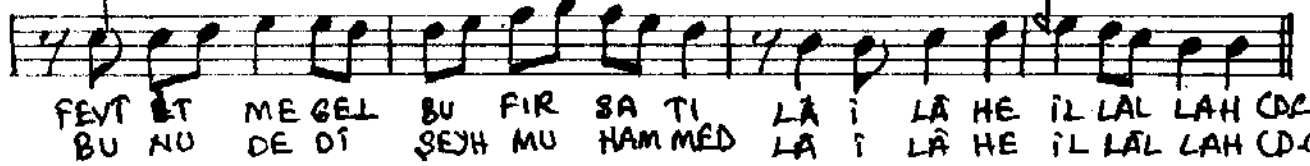
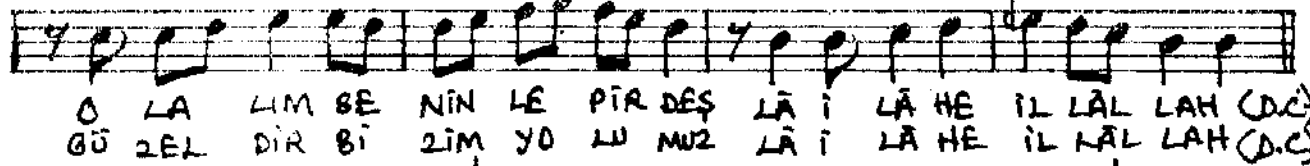
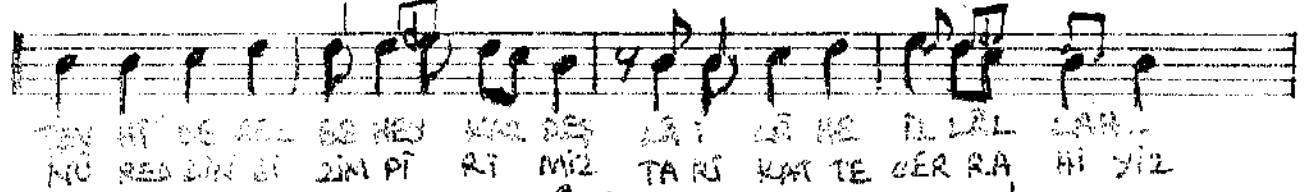
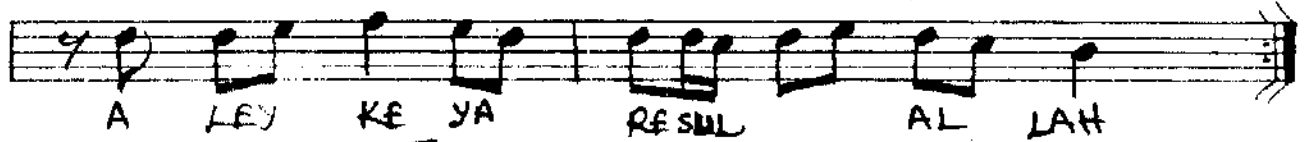
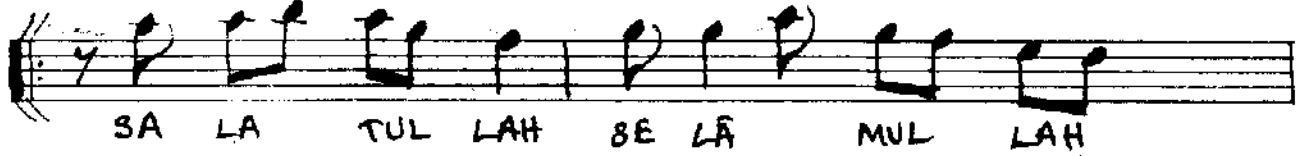
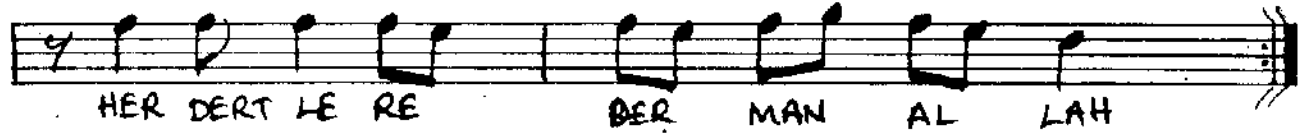


BESTE: HAFIZ SAMİ ÖZFER  
GÜPTE: ŞEYH MUHAMMED  
BURSEVİ

USUL: SOFYAN



TEVHİDE GEL BE HEY KARDEŞ  
LÂİLÂHE İLLALLAH  
OLALIM SENİNLE PİRDEŞ  
LÂİLÂHE İLLALLAH

NÜREDDİN'DEN AL HİMMETİ  
İRİŞ ŞEYHE KİL HİZMETİ  
FEVT İTME GEL BU FIRSATI  
LÂİLÂHE İLLALLAH

NÜREDDİN BİZİM PİRİMİZ  
TARİKATTE CERRAHİYİZ  
GÜZELDİR BİZİM YOLUMUZ  
LÂİLÂHE İLLALLAH

NÜREDDİN YOLUN İTME RED  
ALAM DERSEN DAİM HİMMET  
BUNU DEDİ ŞEYH MUHAMMED  
LÂİLÂHE İLLALLAH

Not: Bestekârın banta okuduğu  
kayıttan notaya alınmıştır.  
28.9.1930 Mithat ARISOY