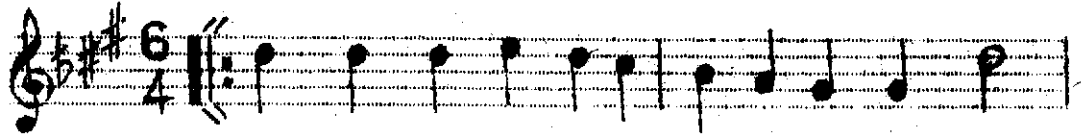
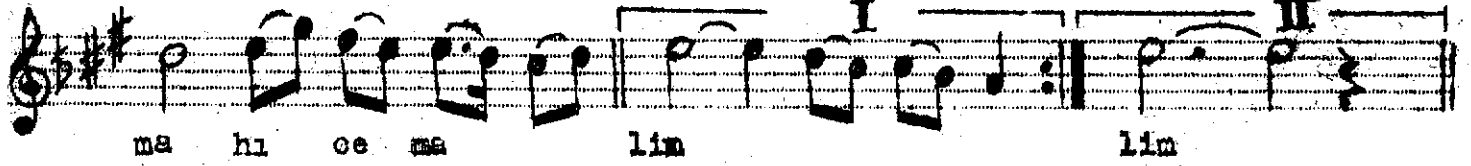


Nakiş Yürük Semai



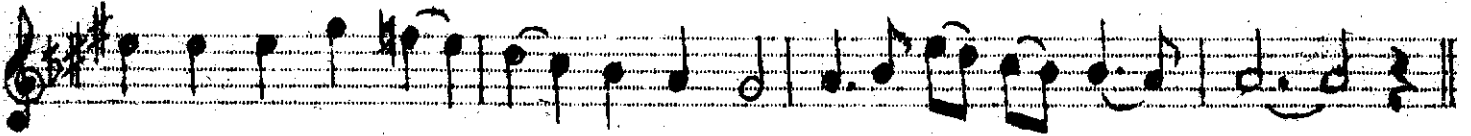
Terk ey le di ger i be ni i



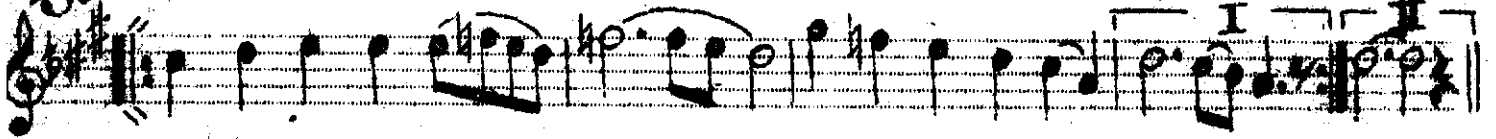
ma hı oe ma lın lın



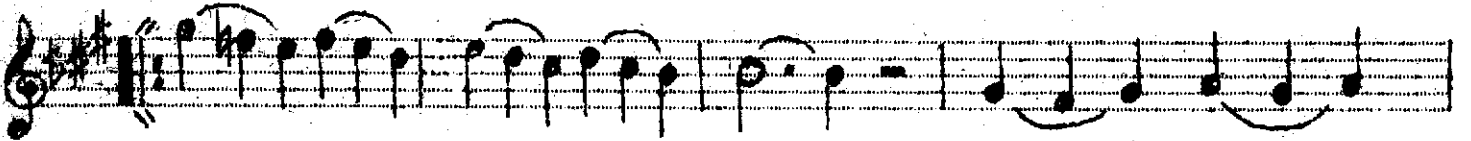
a yes te i vas lit di gnl ma l me na lın



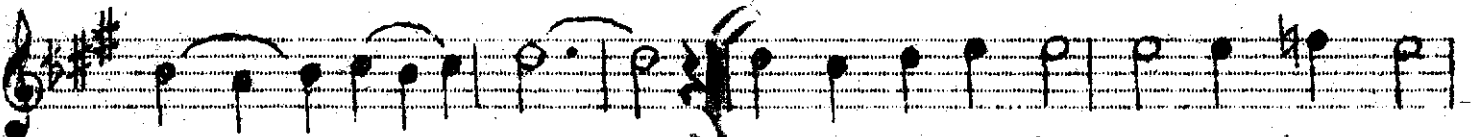
a yes te i vas lit di gnl ma l me na lın



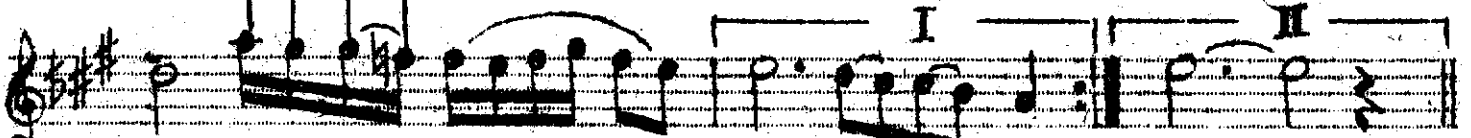
Kur ba nın  lam yar hay ranın  lam dost dost



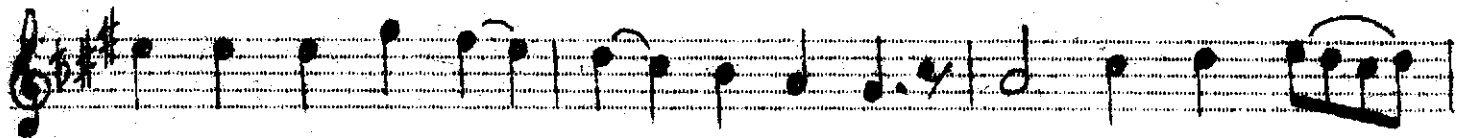
Yar yar yar yar dost dost



dost dost a nım a a nım a a na nım

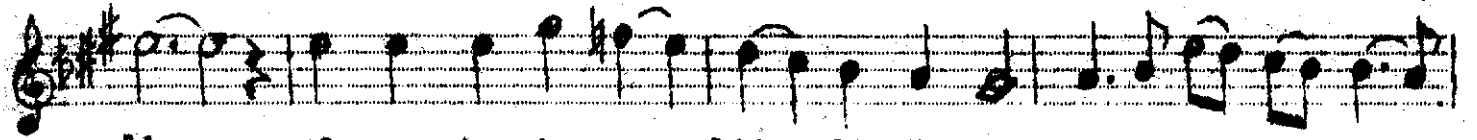


yar ta bi bım bım

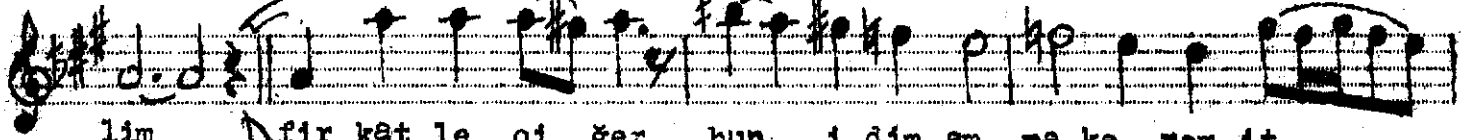


a yes te i vas lit di gnl ma l me na

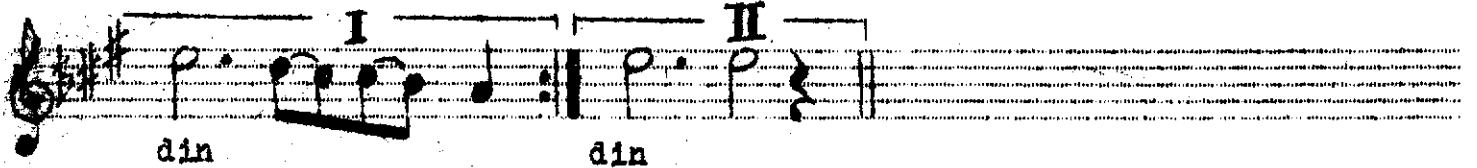
Gel gon a g lm ser v ka dın ta ze ni ha



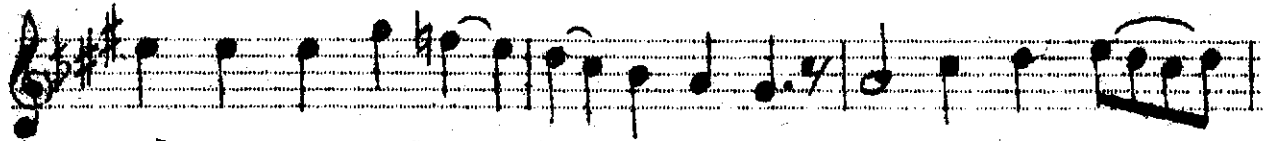
lim ga yes te i vas lit di gö nül ma lü me na
lim gel gon oa gü lüm ser vü ka dîn ta ze ni ha



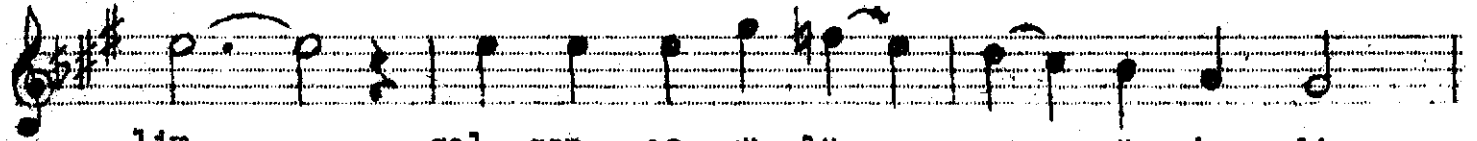
lim fir kat le oi ger hun i dîn am ma ke rem it
lim



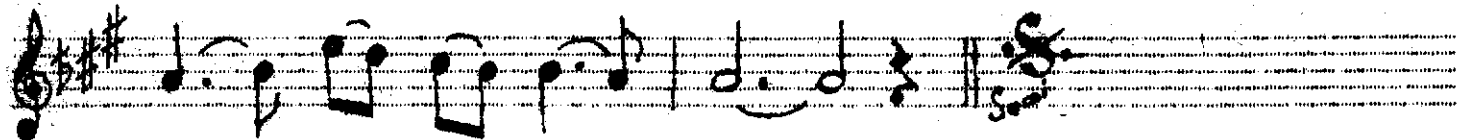
din din



gel gon oa gü lüm ser vü ka dîn ta ze ni ha



lim gel gon oa gü lüm ser vü ka dîn



ta ze ni ha lim

terkeyledi gerçi beni ol mâh oemâlim
şayeste-i vasl itdî gönül mâl-ü-menâlim
firkatle oiğerrhûn idim amma kerem itdîn
gel gon oa gülüm serv-ü kadim taze nihâlim