

(♩ = 64)

(A)

(BENDİR-) (BENDİR-)

(BENDİR-) (BENDİR-)

TAŞ TIN Yİ NE DE Lİ GÖ NÜL SU LAR Gİ Bİ ÇAĞ LAR MI SIN

AK TIN Yİ NE KAN LI YA ŞIM YOL LA RI MI BAĞ LAR MI SIN

AK TIN Yİ NE KAN LI YA ŞIM YOL LA RI MI BAĞ LAR MI SIN

(B)

MEV LÂM --- GÖ RE LİM NEY LER MEV LÂM --- GÖ RE LİM NEY LER

MEV LÂM --- GÖ RE LİM NEY LER MEV LÂM --- (BENDİR)

SOPRANO
TENOR MEV LÂM --- MEV LÂM ---

ALTO
BARİTON
BAS MEV LÂM --- MEV LÂM ---

SOPRANO
TENOR MEV LÂM --- MEV LÂM ---

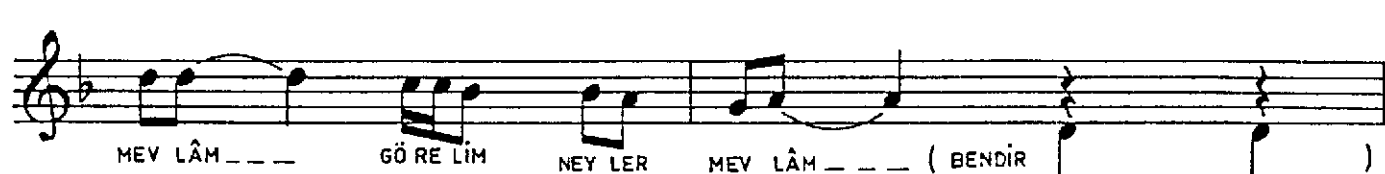
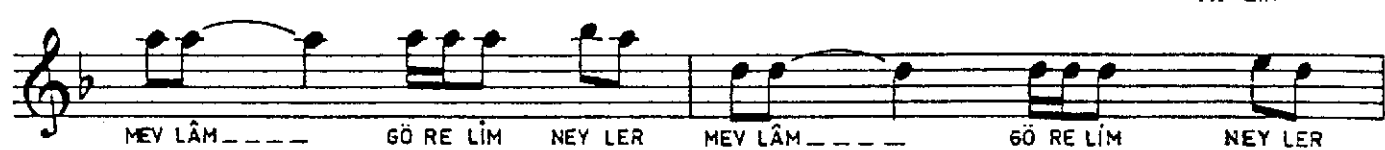
ALTO
BARİTON
BAS MEV LÂM --- MEV LÂM ---

(C)

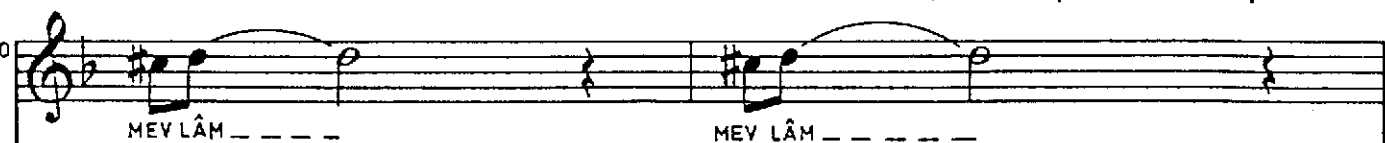
(BENDİR-) (BENDİR-)



③



SCPRANO
TENOR



ALTO
BARİTON
BAS



SOPRANO
TENOR

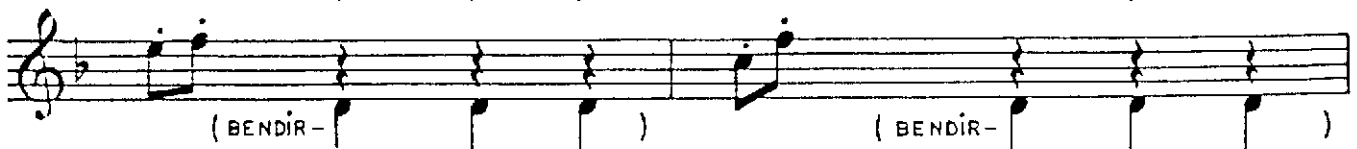
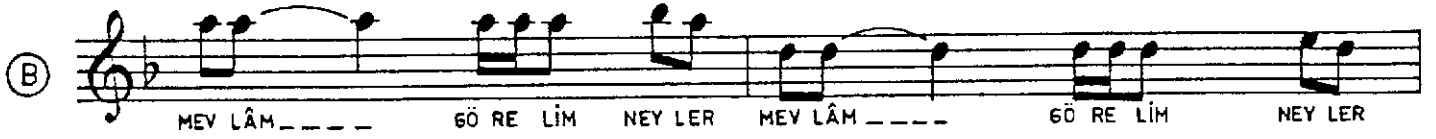


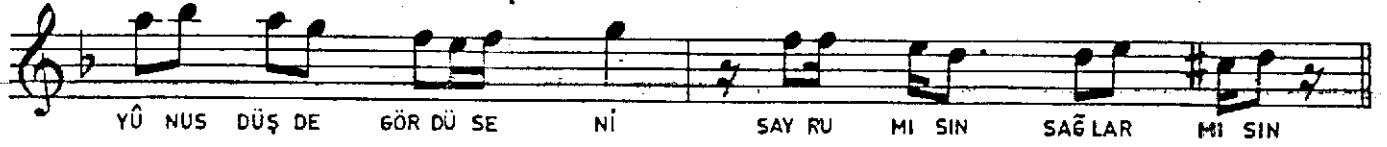
ALTO
BARİTON
BAS



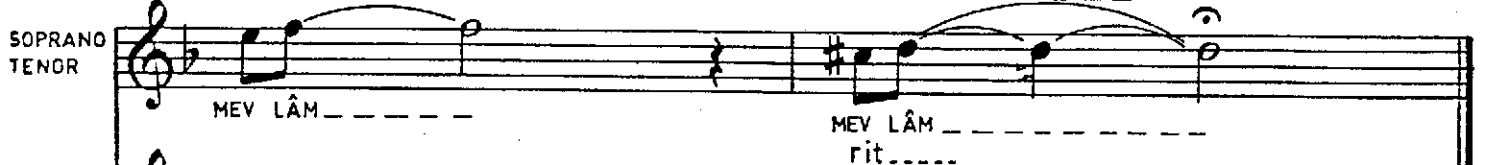
④







(B)



NOT:

ŞİİR, KÜLTÜR BAKANLIĞI YAYINLARI / 1112 - KLASİK TÜRK ESERLERİ / 3 1990 ;
"YÛNUS EMRE - GÜLDESTE" ADLI KİTAPTAN ALINMIŞTIR.