

Küseyri ağır semai

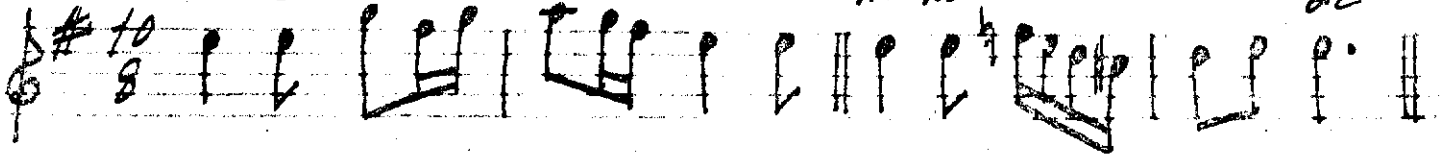
Zaharyanın

Tal a Tin

lev

Ri Ka mer

de

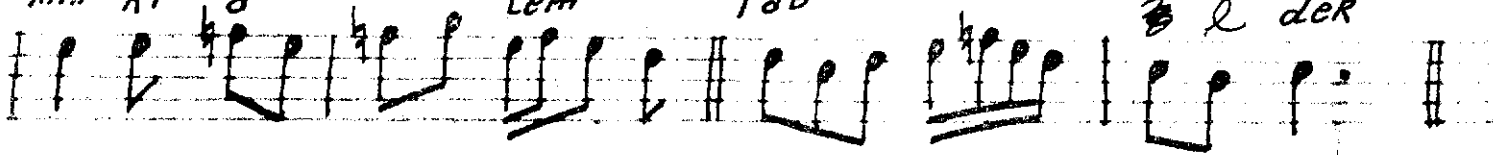


mih Ri a

Lem

TAB

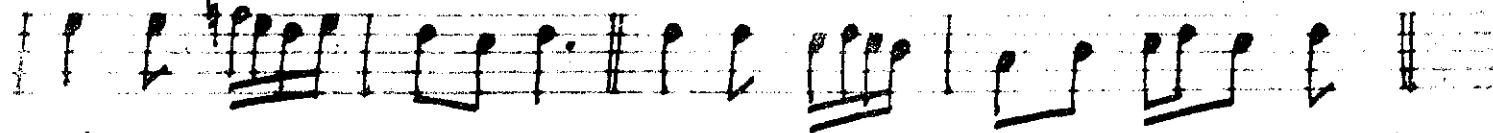
e der



sey RET on

dör dın de ol

meh

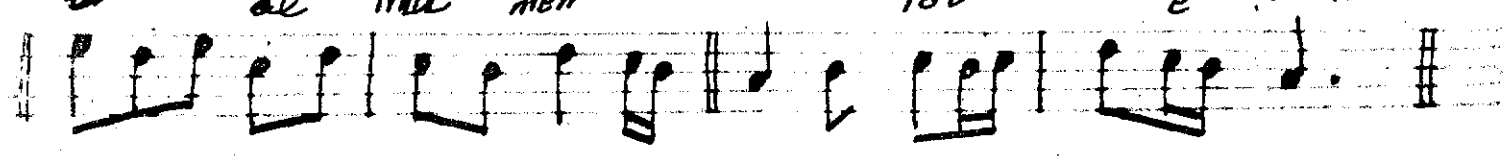


ol

de mai meh

TAB

e der



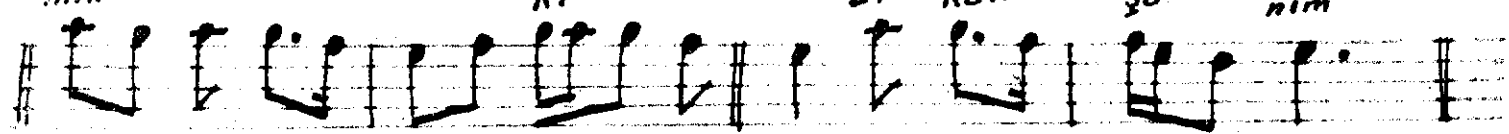
mih

Ri

di Rah

şa

nim

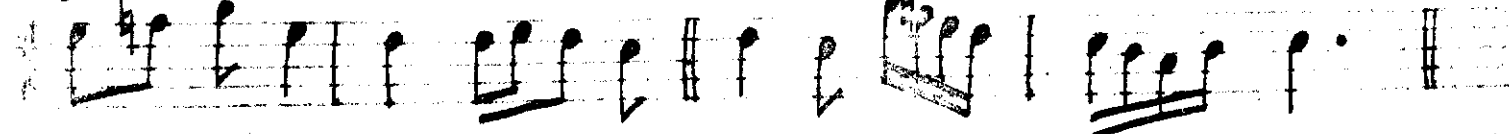


şa

şa hi hu

Ba

nim



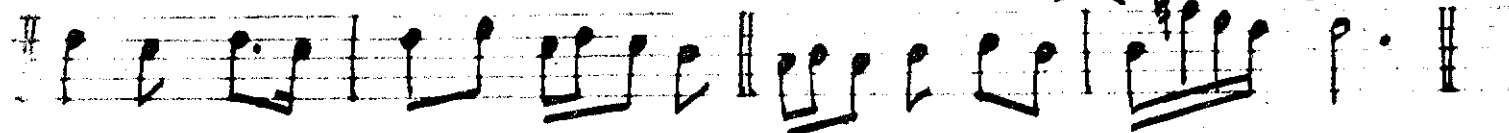
gel

a

öm

Rüm

gel



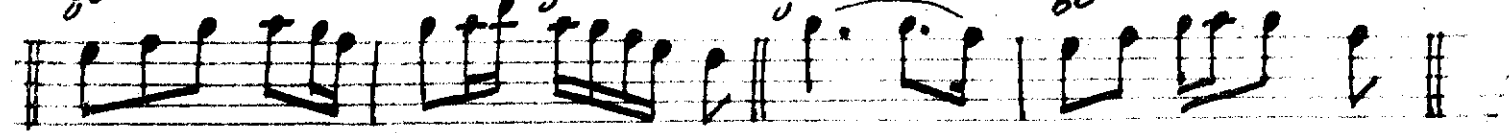
gel

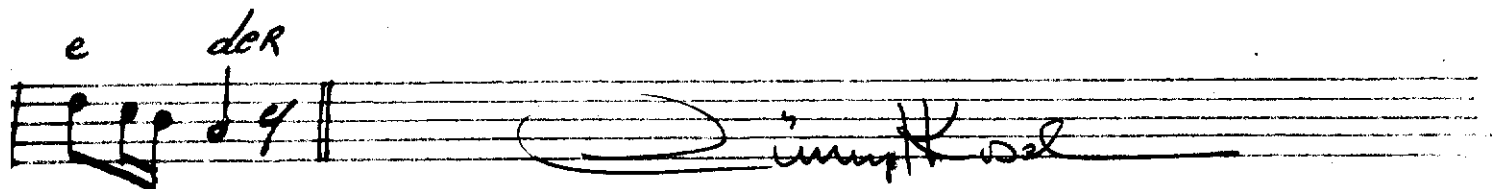
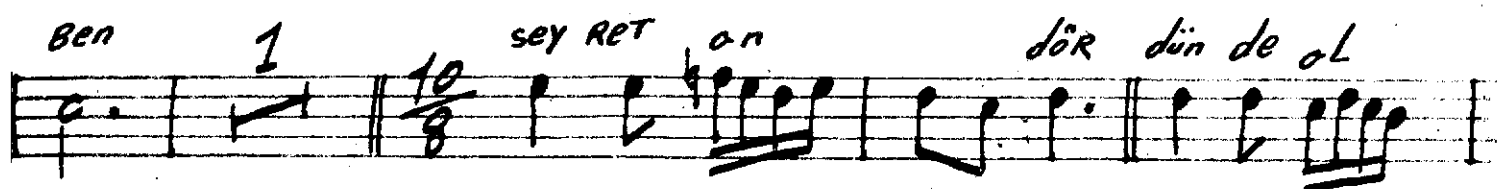
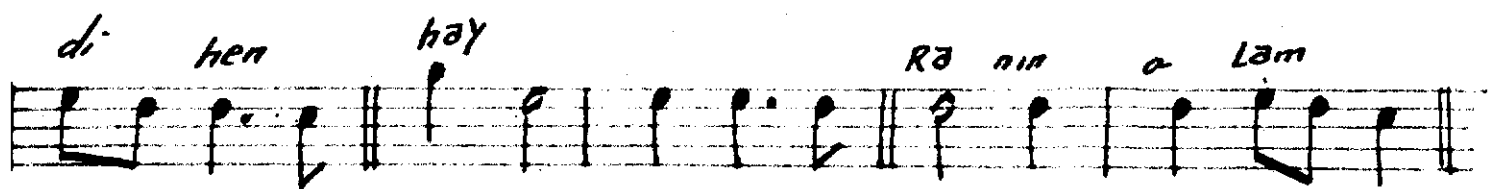
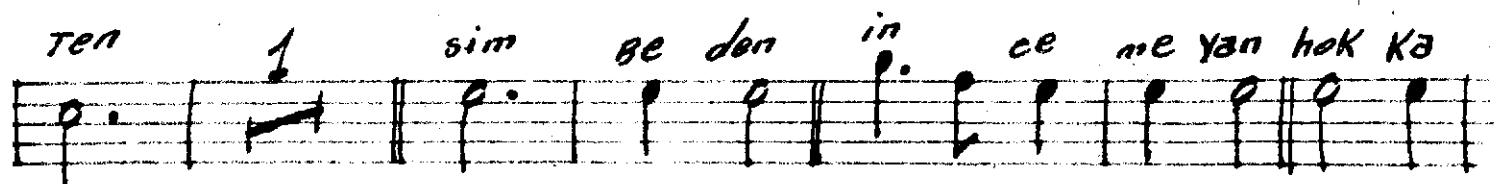
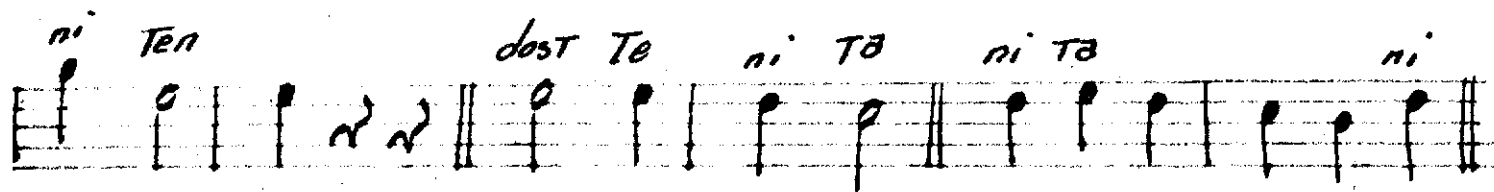
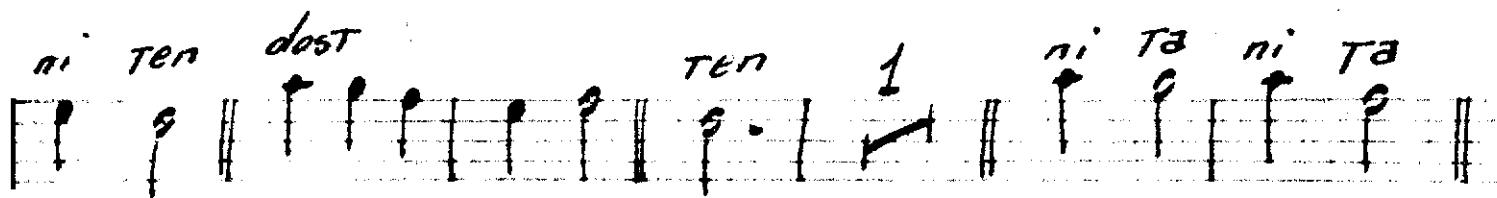
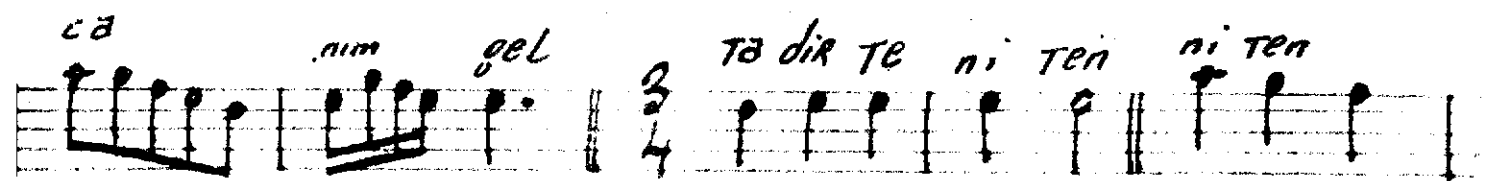
gel

gel

Be

nim





talatın dərri kəmərdə mükri aləm təb edər
səyrət on dördündə ol məkî âlî mektəb edər
mükri diraksanır səki kulanın gəl ömrün gəl
gəl gəl gəl bein cənnə gəl