

Usulü:YÜRÜK SEMAİ (Takat mı gelir sevdiğim ol işve vü nâze) TAB'Î MUSTAFA EF.

Usulü:YÜRÜK SEMAİ (Takat mı gelir sevdiğim ol işve vü nâze) TAB'Î MUSTAFA EF.

TA KAT MI GE LİR SEV Dİ ĞİM OL

İŞ İŞ VE VÜ NA

ZE RUH SAT MI VE RİR

GAM ZE LE RİN ... AR

AR ... Zİ Nİ YA ZE

YAR CA NİM ... GEL

DOST Mİ RİM ... GEL

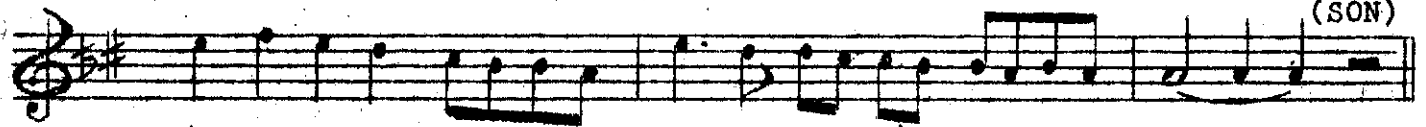
YE LE LE LE LE LE LEL YE LE LE LE LE LE LEL

LE LE LE LE LE LEL LE LE LE LEL LE

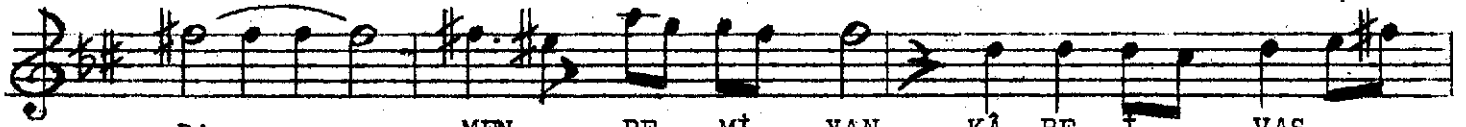
LEL LE LEL LE LEL ... Lİ VAY



RUH SAT MI VE RİR GAM ZE LE RİN AR
DÜŞ DÜ Yİ NE CA NA YO LU MUZ ... SEM



.....	AR ..	ZI	Ni	YA	ZE
.....	SEM ..	Ti	Hi	CA	ZE



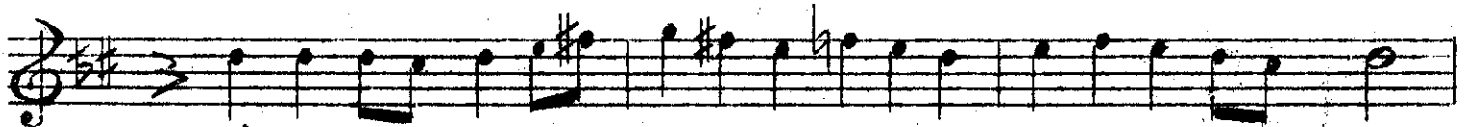
DA MEN .. BE MI YAN KÁ BE I VAS



LIN LIN HE VE Siy



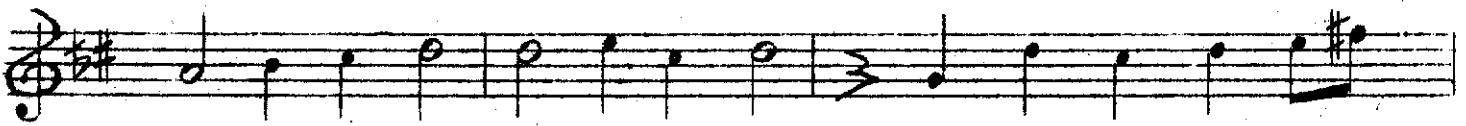
LE DA MEN .. BE MI YAN



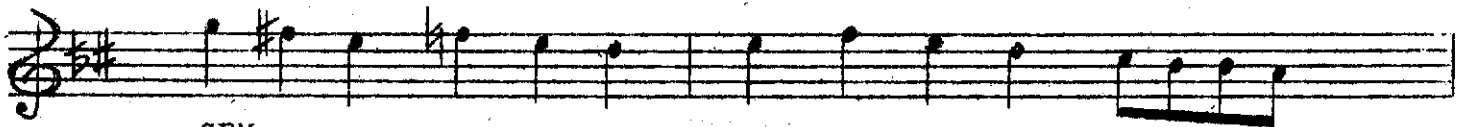
KÂ BE Ĩ VAS ... LIN



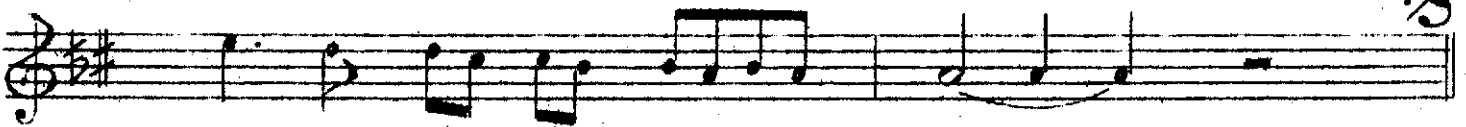
LIN HE VE SIY ... LE



DÜŞ DÜ Yİ NE CA NA YO LU MUZ



SEM



SEM TI HI CA ZE

TAKAT MI GELİR SEVDİĞİM OL İŞVE VÜ NAZE
RUHSAT MI VERİR GAMZELERİN ARZ-I NİYAZE
DAMEN BE MİYAN KÂBE-İ VASLIN HEVESİYLE
DÜŞDÜ YİNE CANA YOLUMUZ SEMT-İ HİCAZE

Terennum:

Yar canım gel dost mirim gel
Ye le le le le le le le
Ye le le le le le le le
Le le le le le le le
Le le le le le le le le le le le le le li vay

Jimmy Kosal