

HICAZ
SOFYAN

HİCAZ ŞARKI

ÖSTE: BÜLENT ULUSOY
GÖTE: HÜSEYİN
TANSEVE.

5- (BAHAR GELİNCE ESER BAŞTA KAVAK.
YELLERİ)

$\text{♩} = 128$

Handwritten musical notation for the song "Yellow" by The Beatles. The score is written on a single staff with a treble clef and a key signature of one sharp (F#). The tempo is marked "4/4". The melody consists of a series of eighth and quarter notes. The lyrics "Yellow" are written below the staff. The notation is handwritten and appears to be a student exercise.

Handwritten musical notation on a single staff. The staff begins with a treble clef, a key signature of one sharp (F#), and a 4/4 time signature. The notation includes various note values, rests, and dynamic markings such as 'p' and 'f'. The handwriting is somewhat stylized and appears to be a student exercise or a composer's sketch.

1-

BAHARGE LINC E SER BAŞTA KA VAK YELLE Rİ GOŞTU RUR GÖNÜL LE Rİ

DA HARGE ZİTCE E SER BAŞTA KA VAK YELLE Rİ QOŞTU RUR GÖ NÜL LE Rİ

DE LI RIJSGAR DIR DE LI (- - - - - S A 2 - - - - -)

BINNAĞ MEYLE SAKSI

BİNNAG MEYLE SARI LIR KI RIK SA ZINTELLE RI PIRINCE CIX GÜ LİİŞ TE.

Handwritten musical notation for the first system of 'The Rose Tree'. The notation is on a single staff with a treble clef and a key signature of one sharp (F#). The melody begins with a quarter note G4, followed by a quarter note A4, and then a quarter note B4. The next measure contains a quarter note C5, a quarter note B4, and a quarter note A4. The final measure of the system contains a quarter note G4, a quarter note F#4, and a quarter note E4. The system ends with a double bar line and a repeat sign.

DURU VE RİQ SUZATIYAN

SU ZA NAM

2-

SEV DA DIR O NIINA DI HERCII ZEL DE BU LUN NAZ BIRDEN TAŞLAFTI ŞAR KI

SE BİR GÜN

A musical staff in treble clef with a key signature of one sharp (F#). The melody consists of eighth and quarter notes, starting on D4 and ending on A4. There are some rests and ties indicated by horizontal lines above the notes.

SE BİR GÜN

SE BPA NE DIR SO RUL. NAZ (- - - - 5 " 2 - - - -)

A single staff of handwritten musical notation. It begins with a treble clef and a key signature of one sharp (F#). The melody consists of several measures of music, including eighth and sixteenth notes, and rests. The handwriting is fluid and characteristic of a personal sketch.

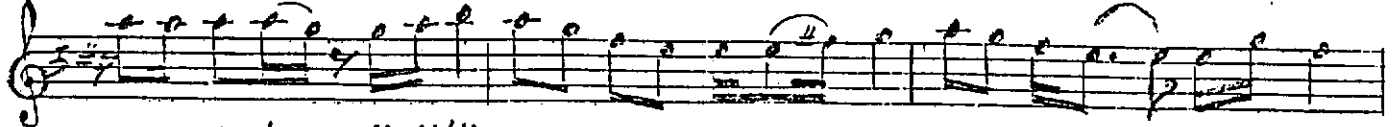
DALGA LI BİRDE NİZ DİR Ö NİN DE HİÇ DU RUL MAZ BİR SİN Sİ YAH BA KİŞ TA .



SU SU VE RİR ŞUZAMAN

ŞU ZAMAN

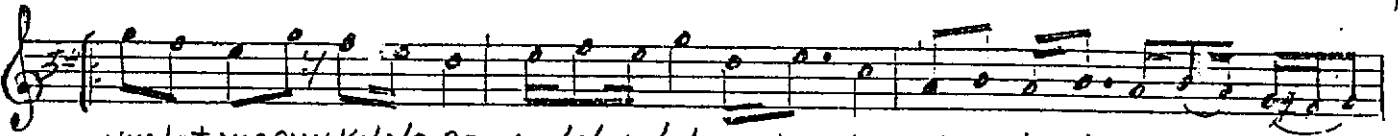
3.



A HU GÖZLER SÜZÜLÜP DALGIN DALGIN BAKAR. KEN HASRET DEN. V O A TEŞ



A. LEV A LEV YA KAR KEN (- - - - S A 2 - - - -)



VUSLAT YORGUN KALPLERE 1 LİK 1 LİK A KAR KEN BİRRİP KIZIL DUDAK TA -



KALI VE RİR ŞUZAMAN

ŞU ZAMAN

ŞUZAMAN

Bülent Ullusoğlu

Bahar gelince eser, başta kavak yelleri,
Coşturur gönülleri, deli rüzgardır deli,
Bin nağmeyle sarsılır, kırık sazın telleri
Bir incecik gülüşte, duruverir şu zaman

Sevdadır onun adı, her güzelde bulunmaz,
Birden başlar bu şarkı, sebep nedir sorulmaz,
Dalgahı bir denizdir, önünde hiç durulmaz,
Bir simsiyah bakışta, susuverir şu zaman.

Ahu gözler süzülüp, dalgın dalgın bakarken,
Hasret denen o ateş, alev alev yakarken,
Vuslat yorgun kalplere, ılık ılık akarken,
Bir kıpkızıl dudakta, kalıverir şu zaman.