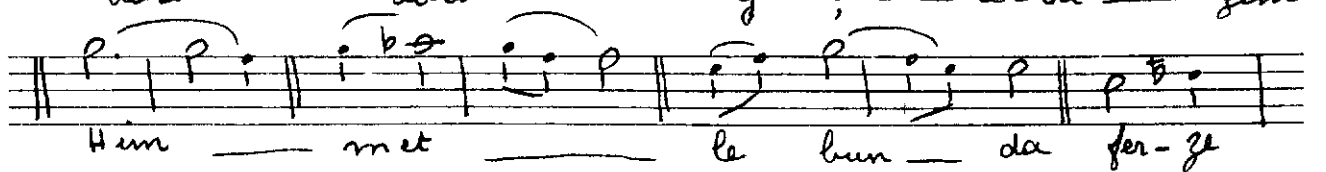
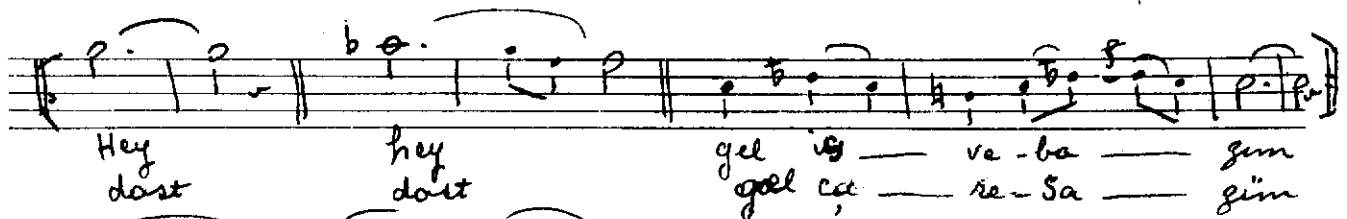
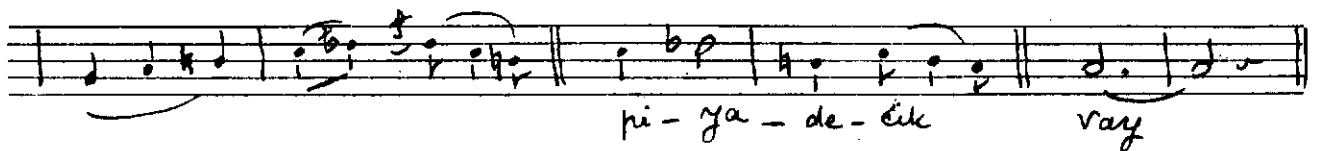
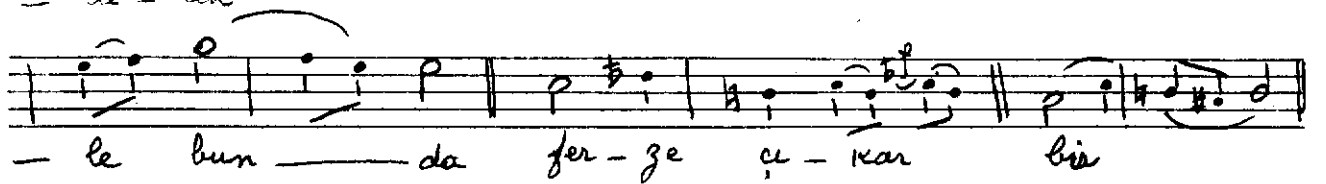
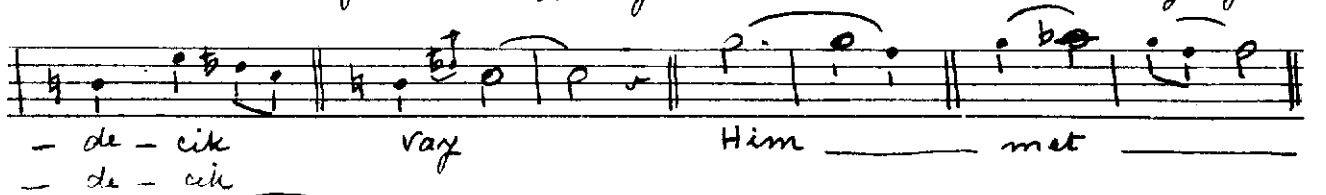
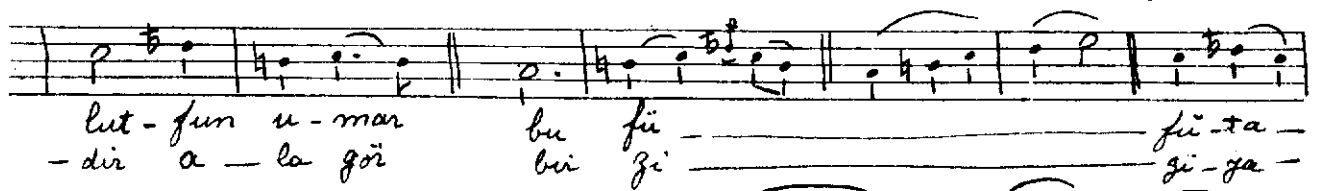
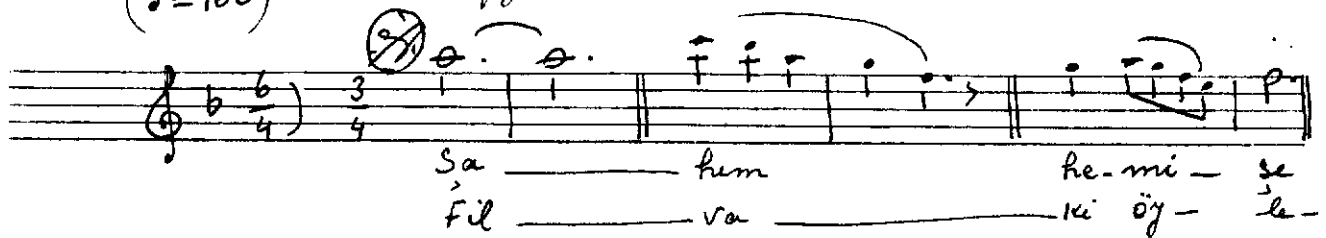


(♩=100)

Muhammed ruseleik yuruk semai (Hacı Sadullah Efendi)



ce - kar bir Bir

hi ya - de - uk ray

(Mıyan) Çok çok ni ya - zi pu - su

ruh - et at sür ni is -

- tü ne ray

(Başlan deremnüme ve ya miyana kadar)

25-11-951

R. Fersan

Sahim hermise lutfun umar bu fiitadeiik
Himmetle bunda ferze çıkar bir piyadeiik
Çok çok niyaz busu ruh et at sür iskiine
Fitvaki öyledir ala gör bir ziyadeiik

x ferg : Santranc da Vegin olimektir.