

Şehinşah Şarkı

Nesîbin Mehmet Yürü

İsmi Hakkı

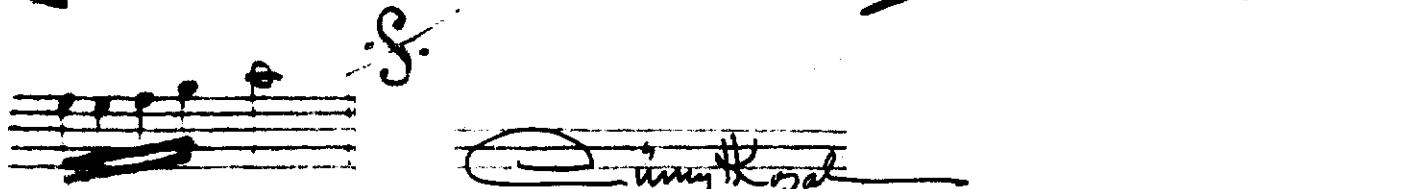
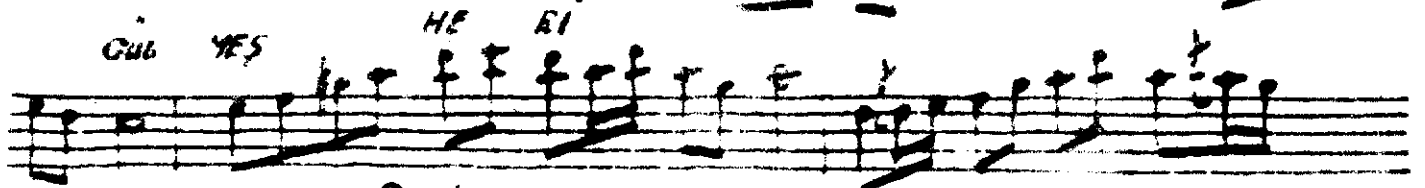
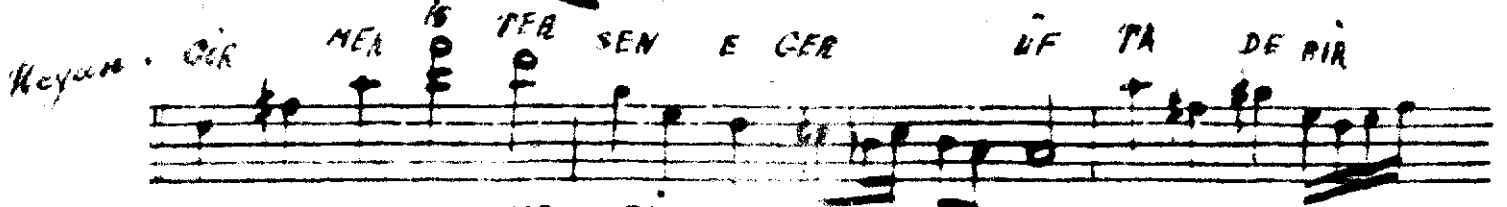
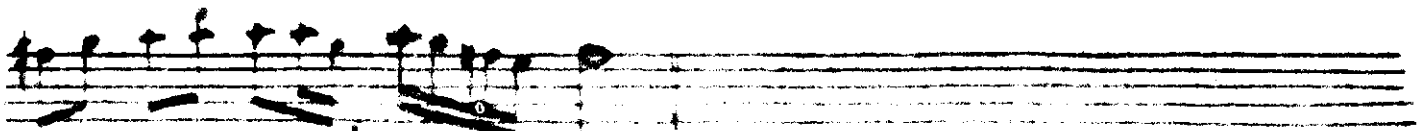
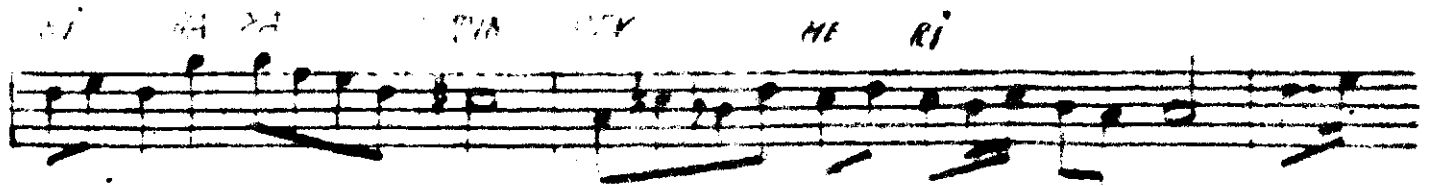
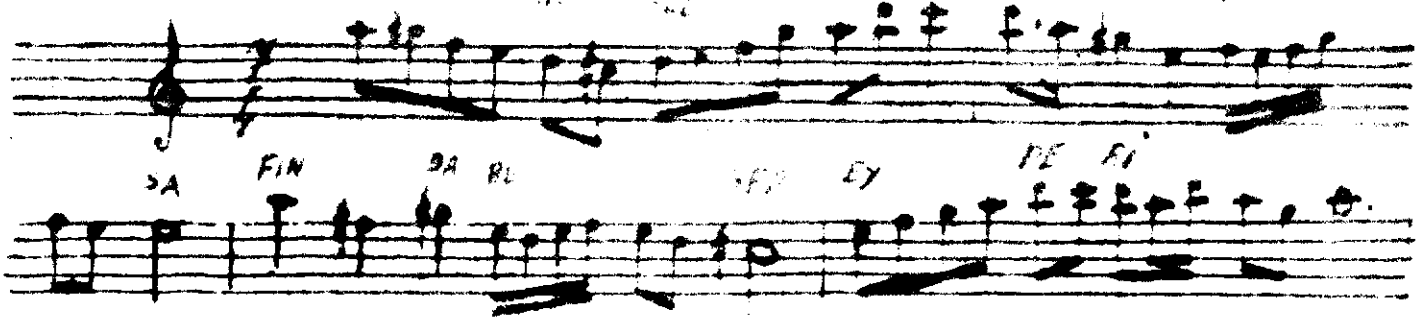
S.B

H.

ŞAM

SI

NEŞİ



Şubhu bulsam şinci şafında bu şeş ey peri
Anladın mı şindeci şevki hayatın carkarı
Görmek istersen eger şiftade bir gül meşkeri
mekarar

Rohtasın öpün şafak turdun dökülün şebleri