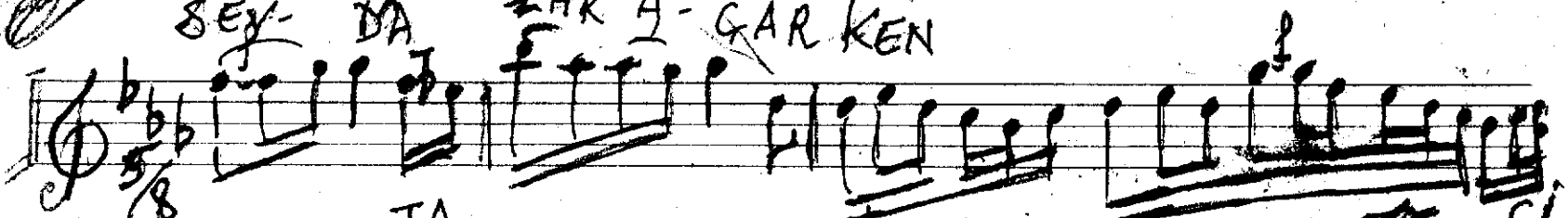


(B)

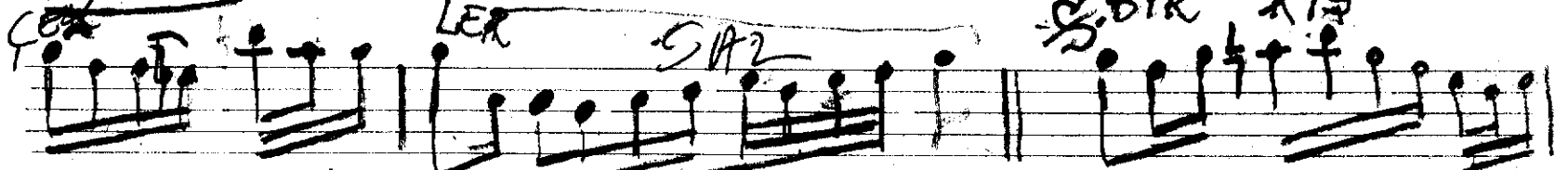
SEY- DA KAR A- GAR KEN



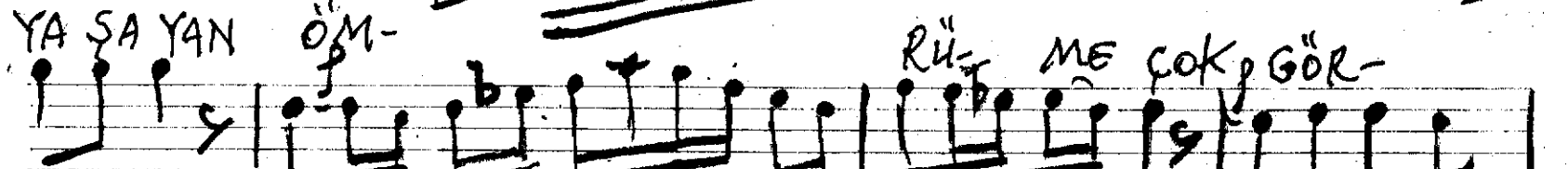
BA SI- MA TA-



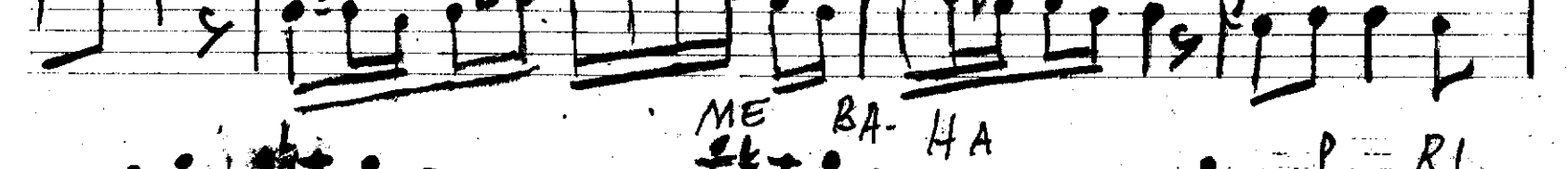
LER SAZ G. BIR KIS



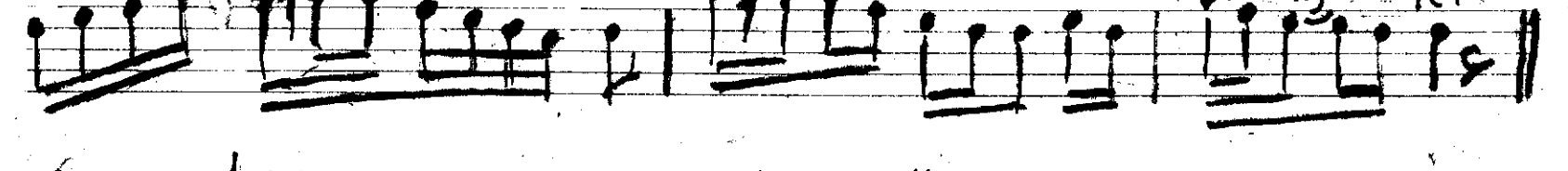
YA SA YAN ÖM-



RÜ- ME ÇOK GÖR-

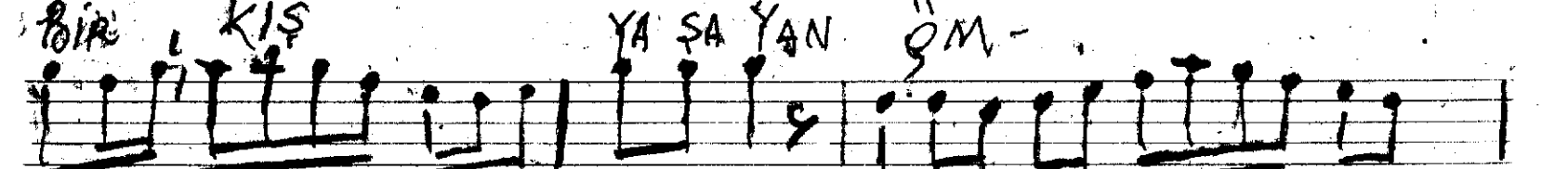


ME BA- HA

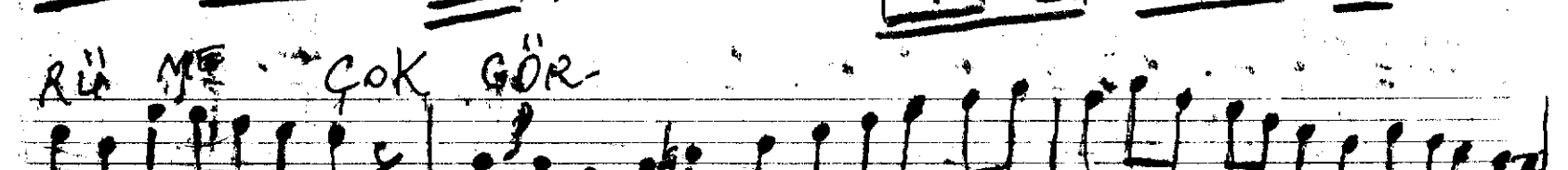


RI

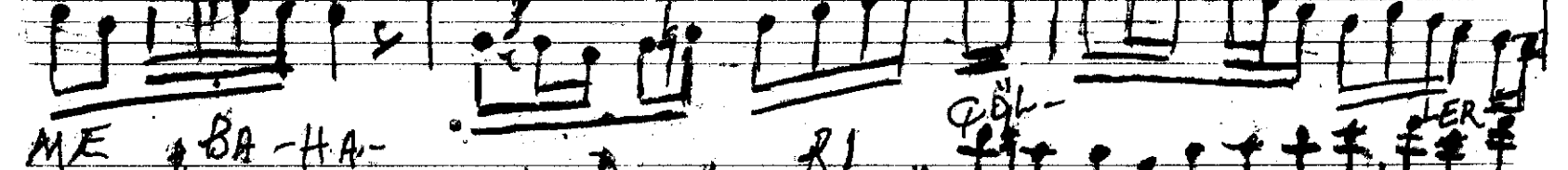
BİR KIS



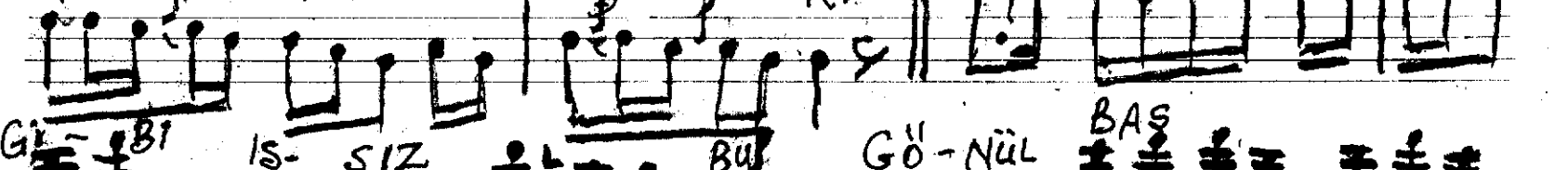
YA SA YAN ÖM-



RÜ ME ÇOK GÖR-



ME BA- HA-



RI

Gİ- Bİ



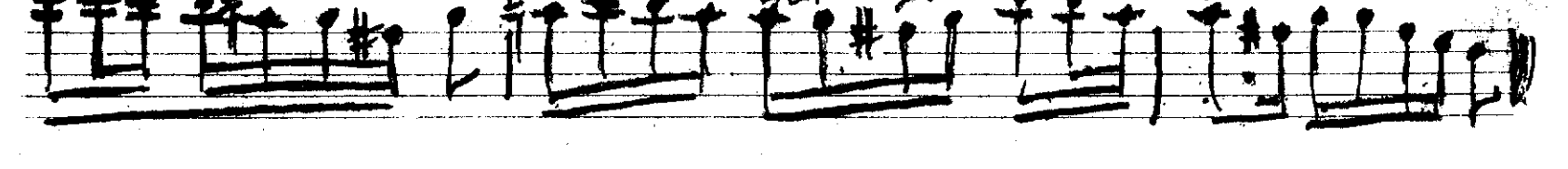
IS- SIZ

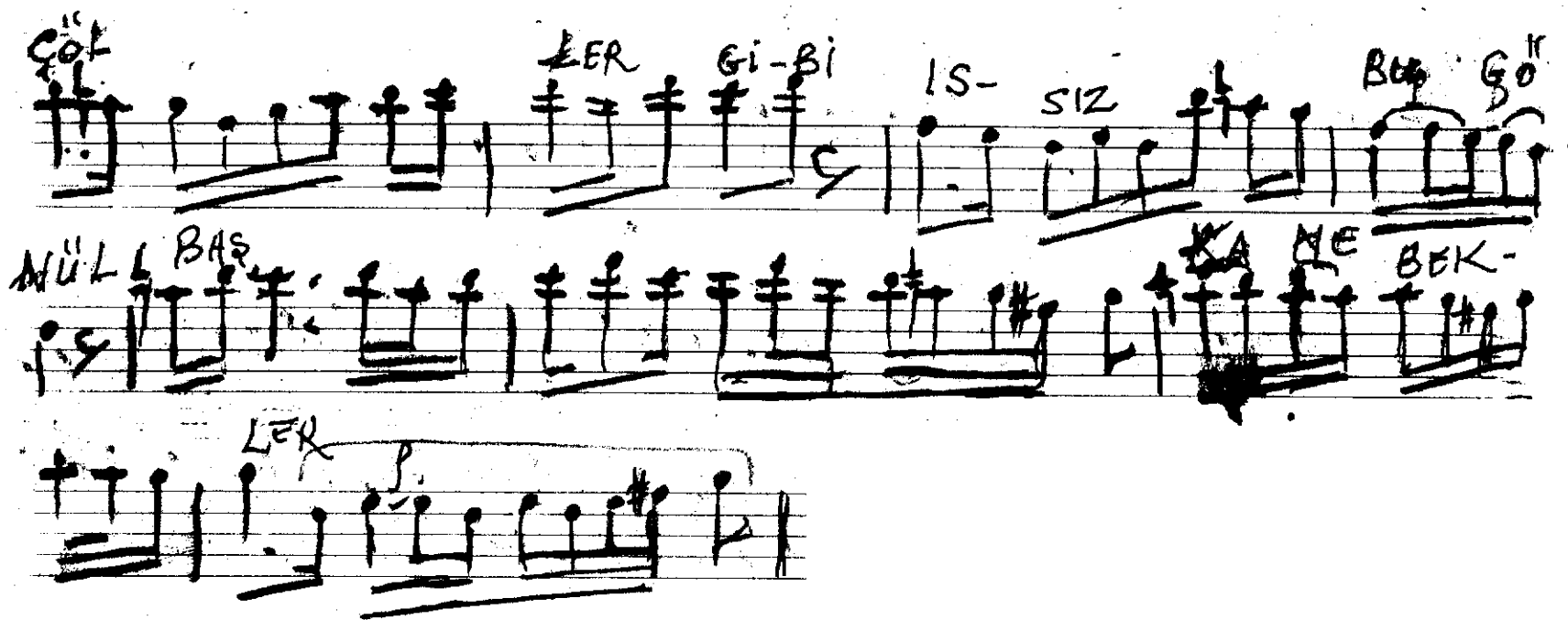
BÜ

GÖ- NÜL

BAS

KA NE BEK LER





serdalar açarken basma taze
çiçekleri

bu kış yasayan ömrüme çok görme
buharı

çöller gibi ıssız bu gönül başka ne
tutkular (eyzan)