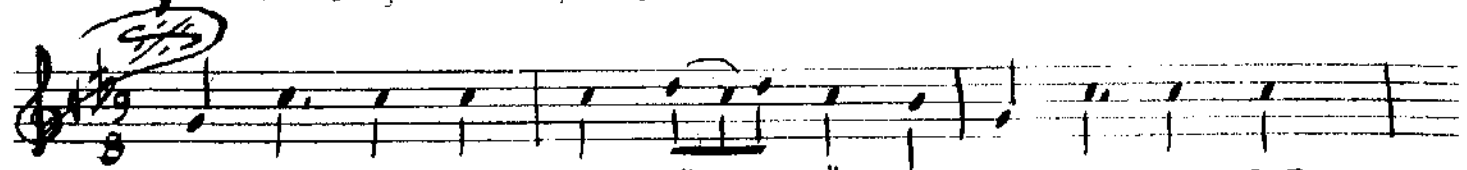


Reklamı

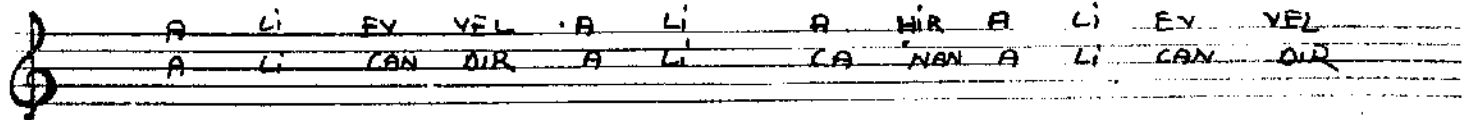
6

Saba bektârî nejesi

= 290 veya 300 civarı yörüklerde.



AY NA YI TUT TUM YÜ ZÜ ME AY NA YI TUT

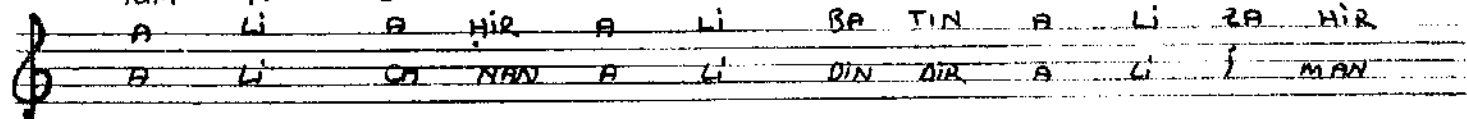


A LI EV VEL A LI A HIR A LI EV VEL
A LI CAN DIR A LI CA NAN A LI CAN DIR

HİE Mİ GE DA İ BİR KEM TER HİE Mİ GE DA

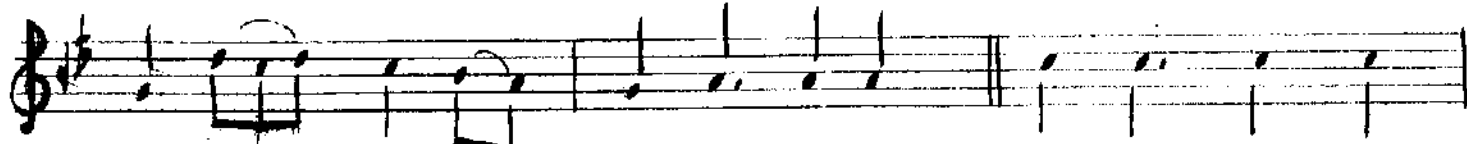


TUM YÜ ZÜ ME A LI GÖ RÜN DÜ GÖ ZÜ ME

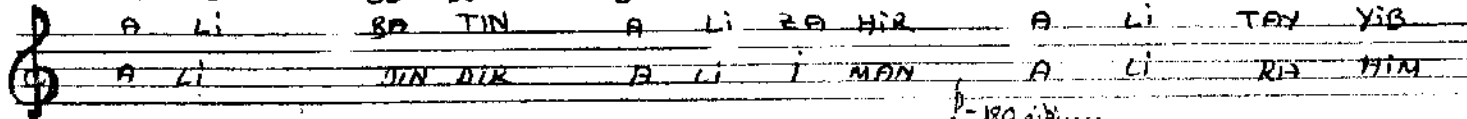


A LI A HIR A LI BA TIN A LI ZA HIR
A LI CA NAN A LI DİN DIR A LI MAN

İ BİR KEM TER GÖ RÜN GÖ RÜR Dİ LİM SÖY LER

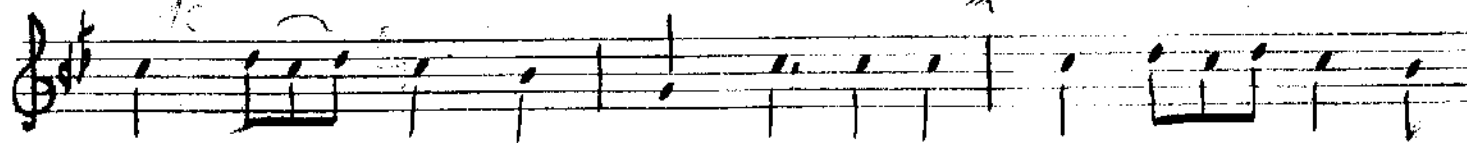


A LI GÖ RÜN DÜ GÖ ZÜ ME NA ZAR KIL DİM

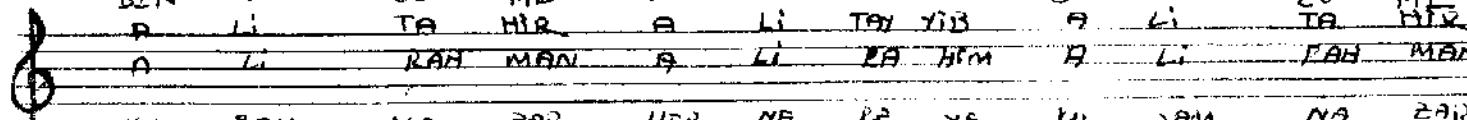


A LI BA TIN A LI ZA HIR A LI TAY YİB
A LI DİN DIR A LI İ MAN A LI RİA HİM

GÖ RÜN GÖ RÜR Dİ LİM SÖY LER

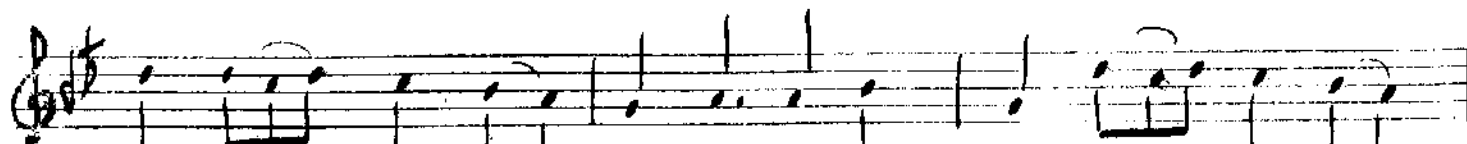


BEN Ö ZÜ ME NA ZAR KIL DİM BEN Ö ZÜ ME

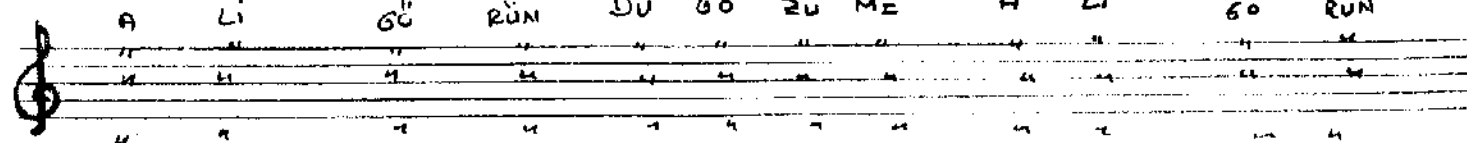


A LI TA HIR A LI TAY YİB A LI TA HIR
A LI RAH MAN A LI ZA HİM A LI RAH MAN

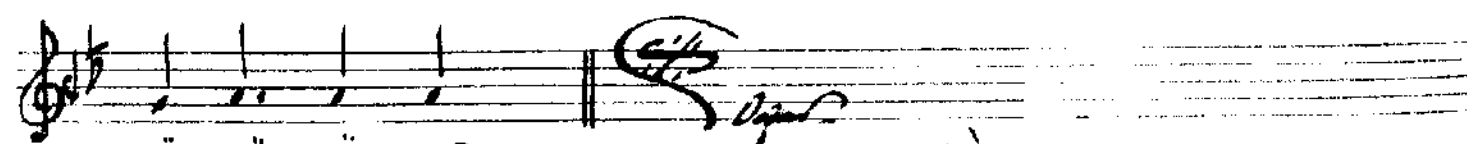
KIL SAM NA ZAR HER NE RE YE KIL SAM NA ZAR



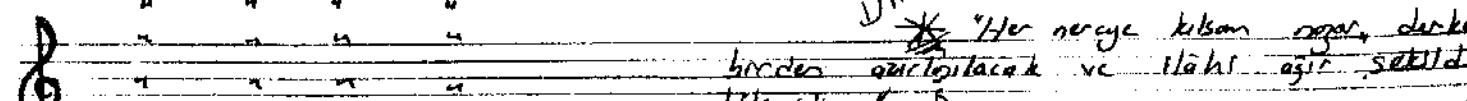
A LI GÖ RÜN DÜ GÖ ZÜ ME A LI GÖ RÜN



A LI GÖ RÜN DÜ GÖ ZÜ ME A LI GÖ RÜN



DÜ GÖ ZÜ ME



DÜ GÖ ZÜ ME

Dikkat!

* Her neyse kişan nazar, derken
birinden çıkılacak ve ilahî ağır şekilde