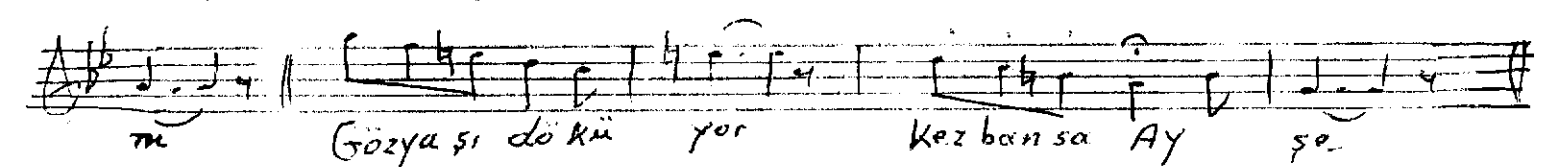
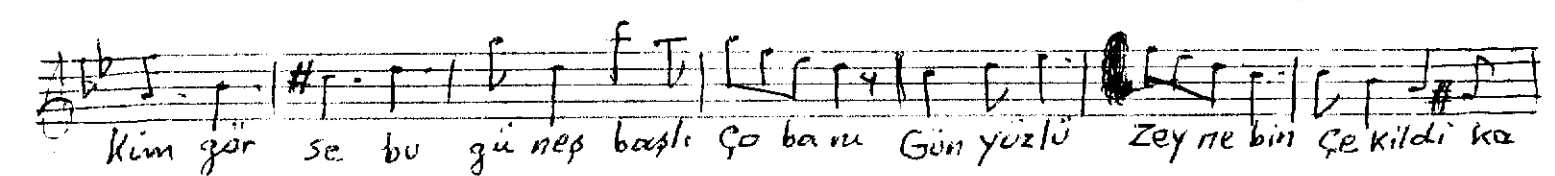
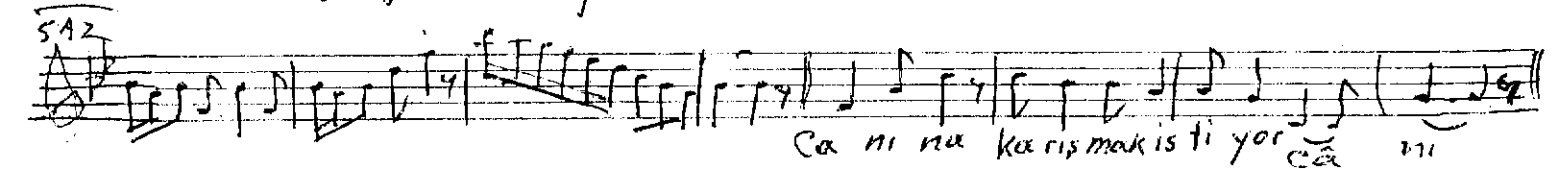
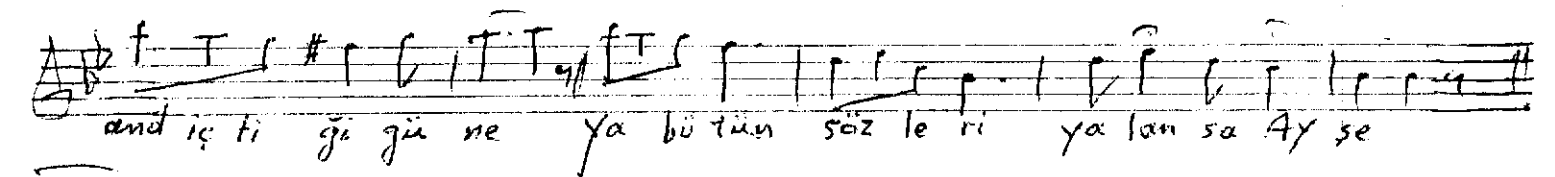
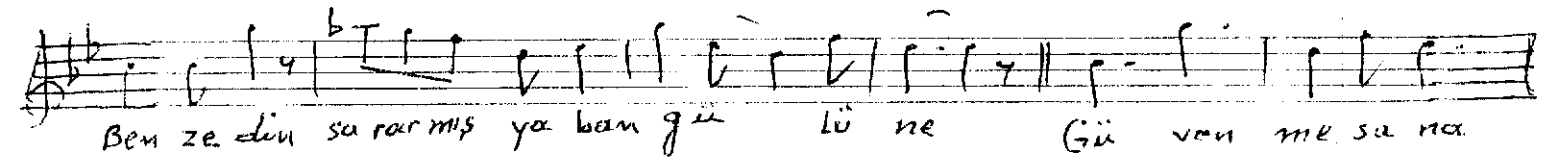
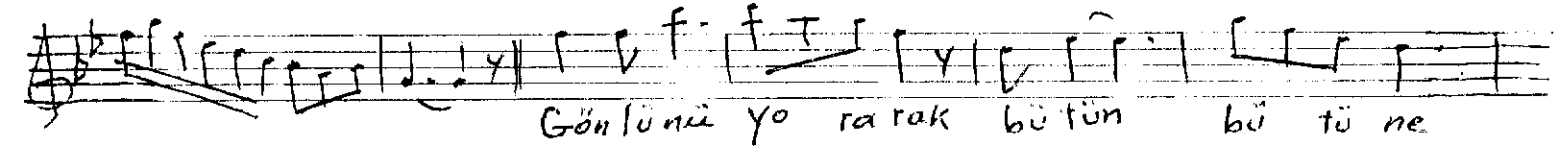
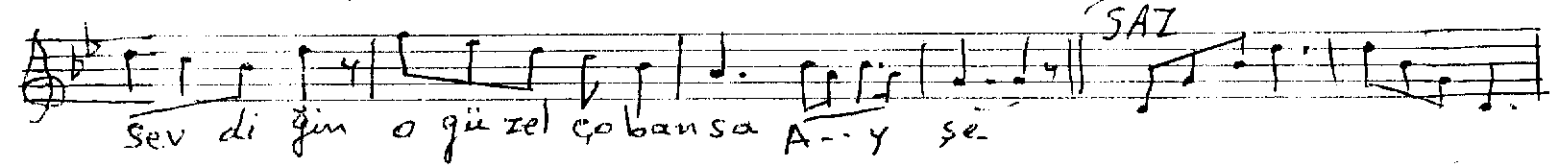
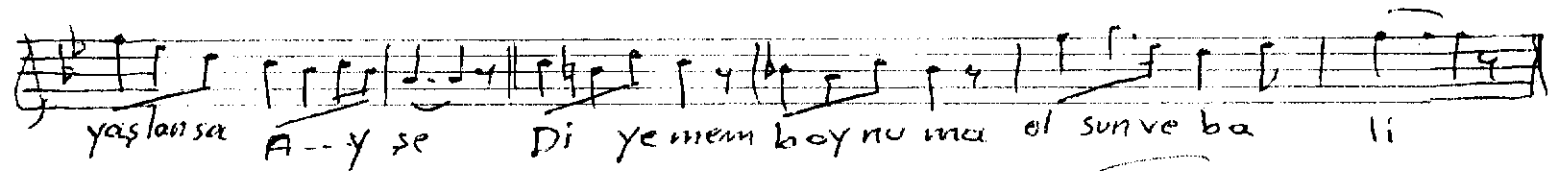
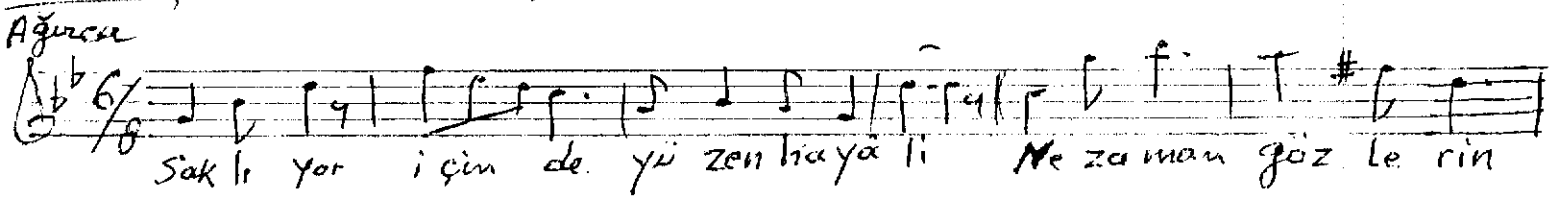
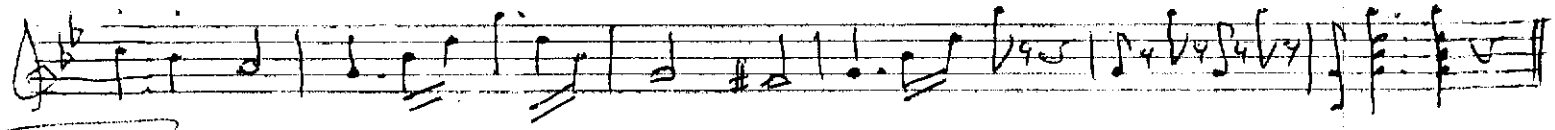
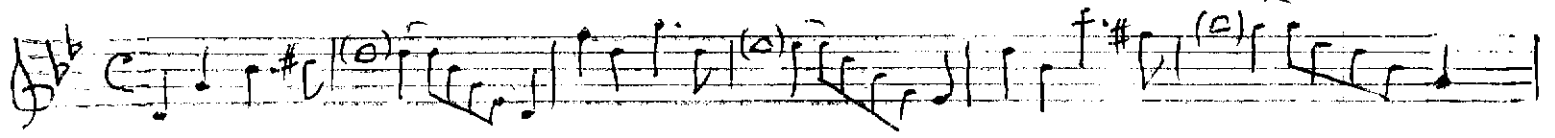


Ayşe --- Sema

Göste : Faruk Nafiz Çamlıbel

Beste : Hacı İsmail Yengün



Cüneyt KOSAL

Ayşe.. Sana

Devam :

Ağırca **Saz**

Orta

Ça ba nın bir ki zil ye le saç la rı A te ş tir a lın maz e le saç la rı

Ah he le saç la rı he le saç la rı ya kar par ma ğı na

Solo

do lan so Ay şe

Ay şe kaç ıo ban dan teh li ke li dir ken di ni

â te şe a tın de li dir Ku ş la ra em ni yet

et me me li dir bu lış tu ğu nuz yer or man sa Ay şe

Saz

O ne bir den bi re Kar şı m da sı o l du n

Bir an da bo ş al du n bir an da dol du n Yok sa d ü n Ço çuk ken a na mı ol du n

Ağır laş a r a k

Ya b ü t ü n söz le ri ya lan sa Ay şe

Final