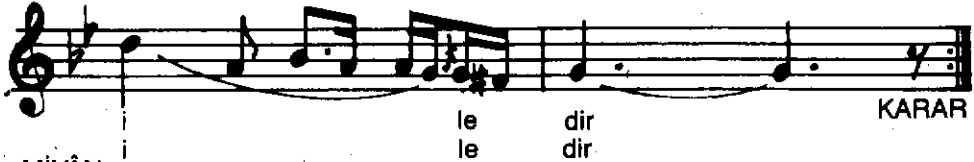
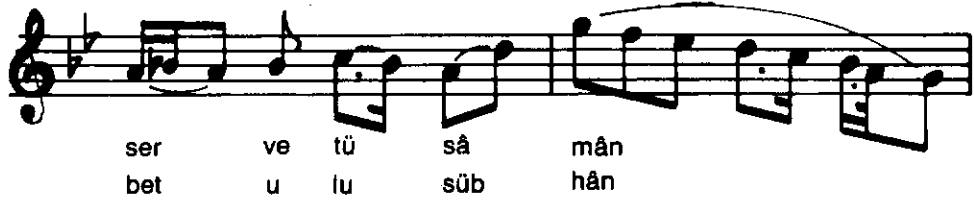
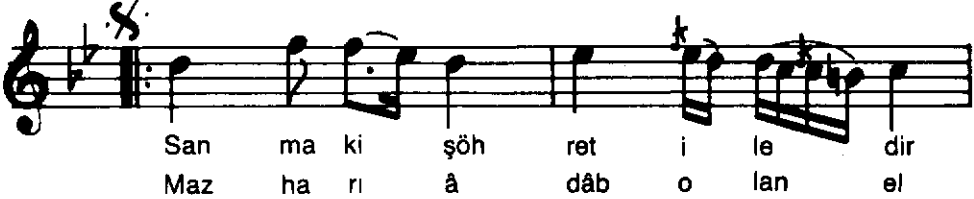
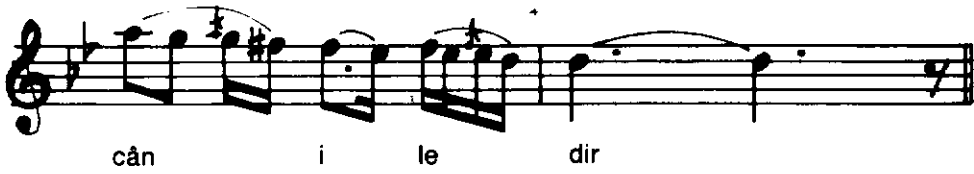
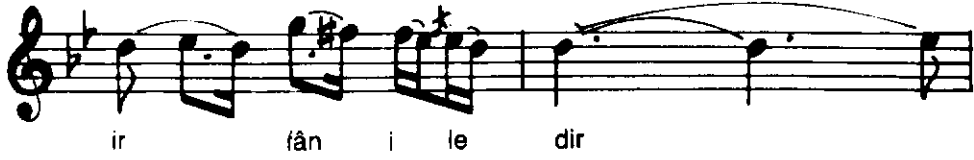


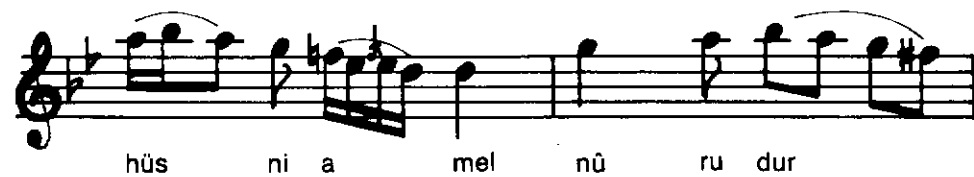
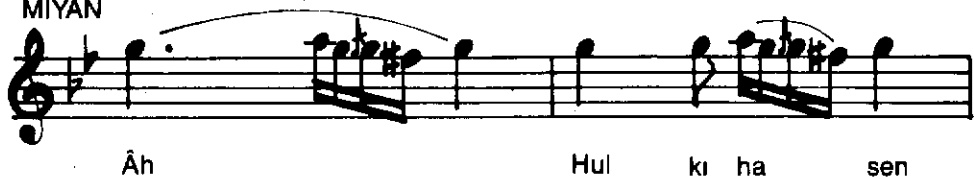
# NIHÂVEND

DEVİRİ HİNDÎ

KEN'ÂN RIFÂÎ



MIYÂN





Al

lah

yo

lu

nun

### *İnsanlık İrfân İledir*

Âdemin âdemliği irfân iledir, cân iledir  
Sanma ki şöhret iledir, servet ü sâ mân iledir  
Hulk-ı hasen, hüsn-i amel nûrudur Allah yolunun  
Mazhar-ı âdâb olan elbet ulu Sübhân iledir

Kıymeti insân olanın görgüsüdür, himmetidir  
Mârifet-i nefsi onun vâcibe-i zimmetidir  
Göz gibi gör âlemi, âdem ona bir göz bebeği  
Her ne ki mevcûd ise âlemde onun nîmetidir