

# MÜSTEAR PEŞREVI

Devr-i kebir

2. Hane.


  
 A - tes - ne ze ned - derdi - li ma -  
 Kū - telī - ne kū ned - menzi - li ma -  
 il - lā - hu - yā ri hey hūn kā - ri men  
 il - lā - hu - yā ri hey hūn kā - ri men  
 ger - ā - le mi yan - cūm le - tā bi  
 . ban bā . . şed yā ri hey hūn kā ri men  
 hal - li . . . ne kū ned . . . mūs ki . . li ma . .  
 .. il lā . . hu . yā ri hey hūn kā . . ri men  
 he yi hey . yā ri men . . he yi hey . . mi ri men  
 yar . . . yār . . . yar yü re ğim . yār  
 yar yü re ğim del ci ge tim gör ki ne ler var  
 lm . tu zi han . . . da ni mū has . .  
 kā ni bakt i han . . . da ni mi . . . re sed  
 sul . tā ni sul . . . tā nā ni mā . .

e zi su yi mey . . . dan . mi . . . re sed Ah

ik . ba . . . li a . . . . . ba . dan . sü de

des . ta ni dil . . . . . vi ran sü de

pür . sa nû cu . . . . . yan mi re vem . . . .

an . su . . . ki sul . . . . . tân . mi . . . . re sed

Pür nûr me şev . . . . . cûn a sü man

ser seb zi şev . . . . . cûn . bus . . . . . tân

Şev a şî na . . . . . cûn ma hi yan

kân bah ri um . . . . . man . mi re sed .

Mut ri ba es ra ri ma ra baz gû . . . hey yâr .

he . yi dost kis sa hâ yi can fe za ra baz . gû . .

hey yâr . . . he yi dost Mah ze ni in na fe tah na

ber kü şa . . hey yâr. hey yi dost sır rî câ nî

Mus ta fa ra bâr. gu . . hey yâr . . hey yi dost

hey mah bu bi men . . hey mer gu bi men

hey mah lu bi men. hey hey. yâr . . yâr. ey. mah buli men

## *Kinci Selâm*

*Evfer.*

Ah Ah sul tâ nî . . meni  
der men bi de mi

ni sul tâ nî . . me . . ni  
mi men zin de şe rem

ah en der di . . lü can  
ah yek can ci şe ved

can ved i ma nî . . meni  
ved sad câ nî me nî

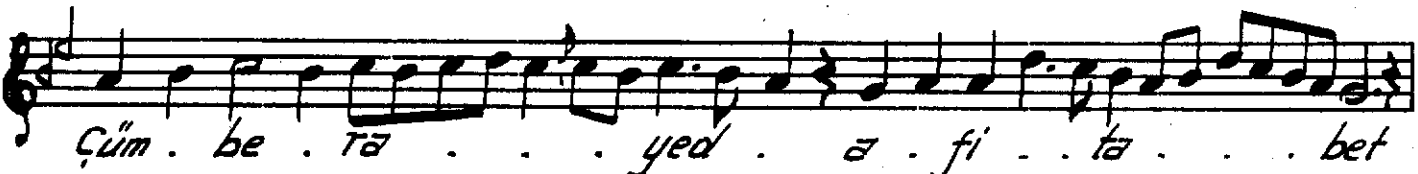
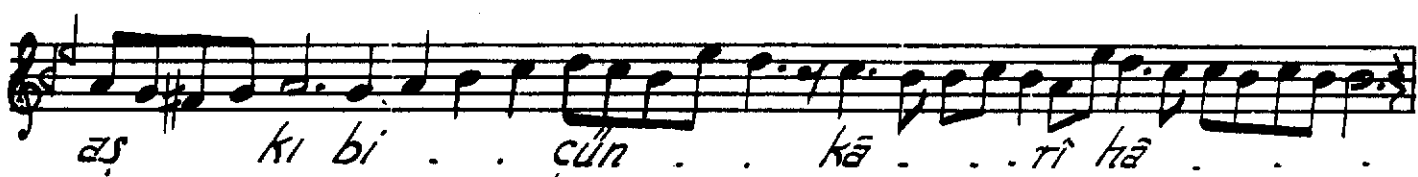
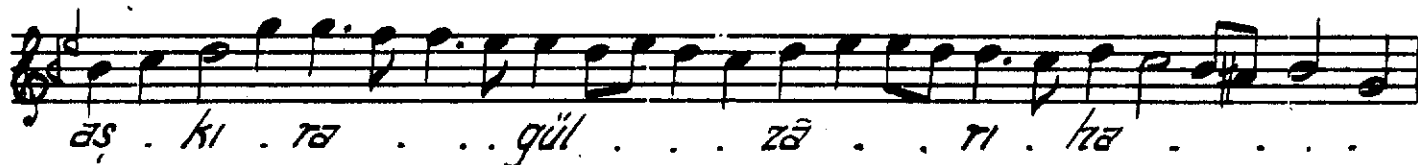
ah i . . ma nî . . meni

*Terennüm.*



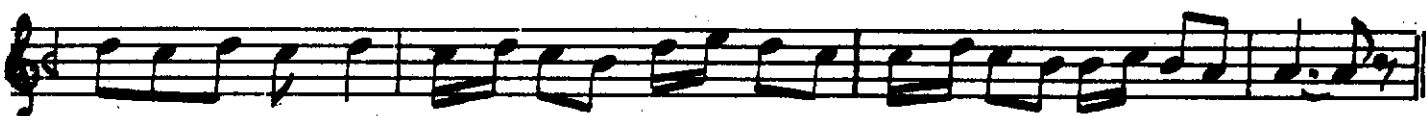
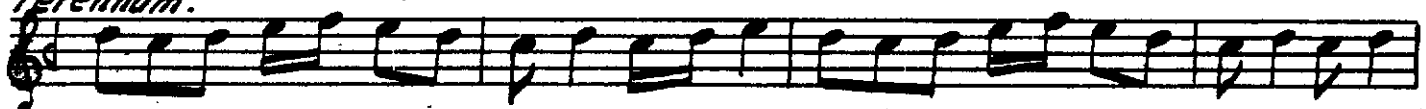
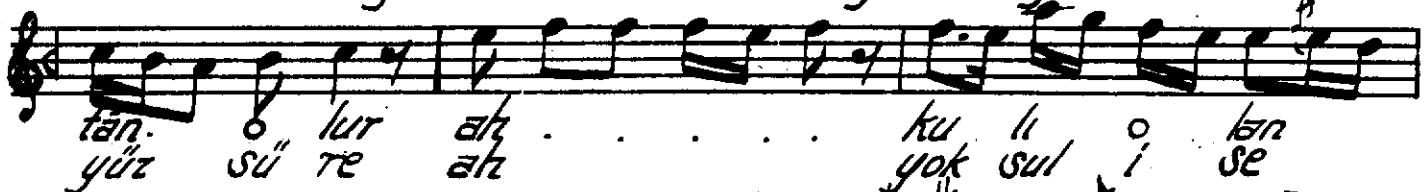
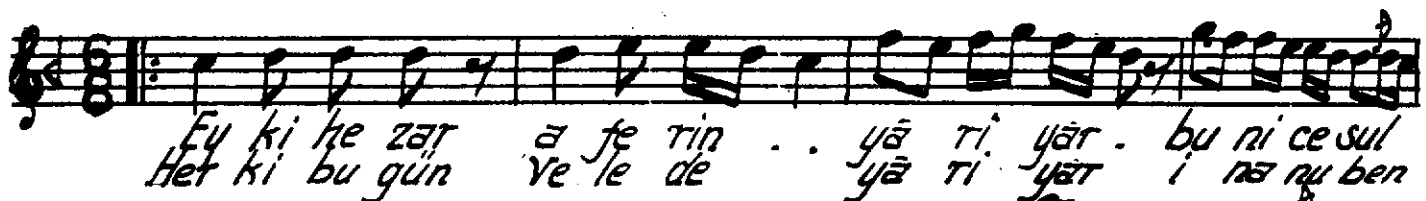
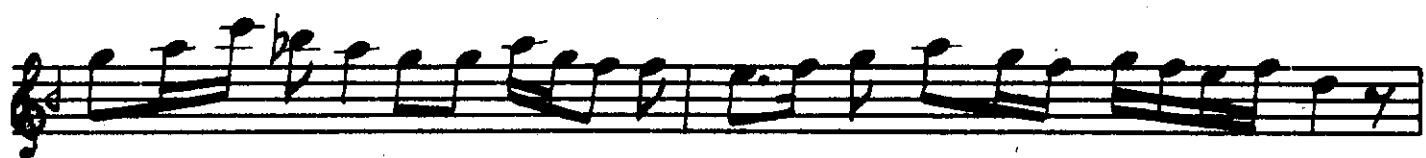
## *Yecüncü Selâm*

*Evsat.*



*Terennüm.*





Uinkible i dil cist bi gū ca ni ha ra bat yā ri men yār

ah yā ri men yār yār . . . yār . . . . .

yār . . . yā ri men vāy yār yā ri men

yā ri me rā . . . ah yā ri men yā ri me rā dost yā ri men

yā ri me rā ah yā ri men vāy

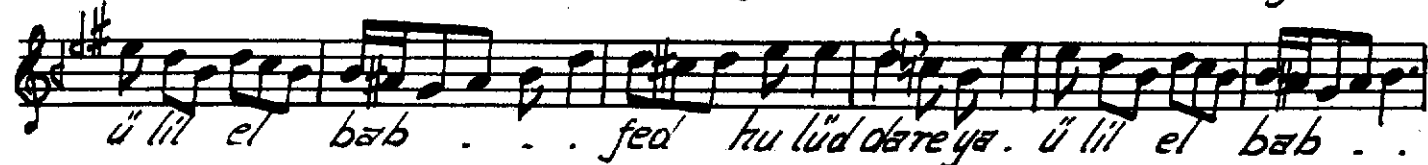
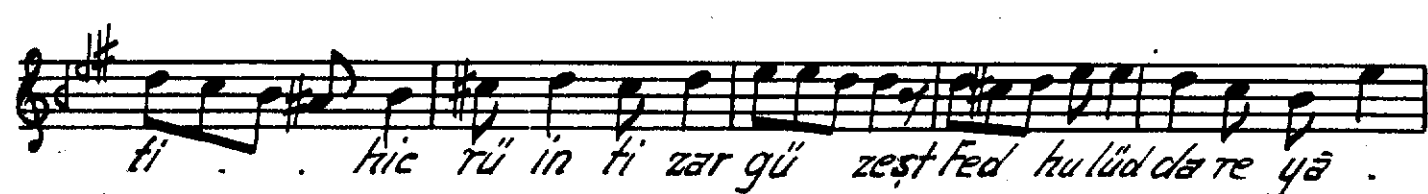
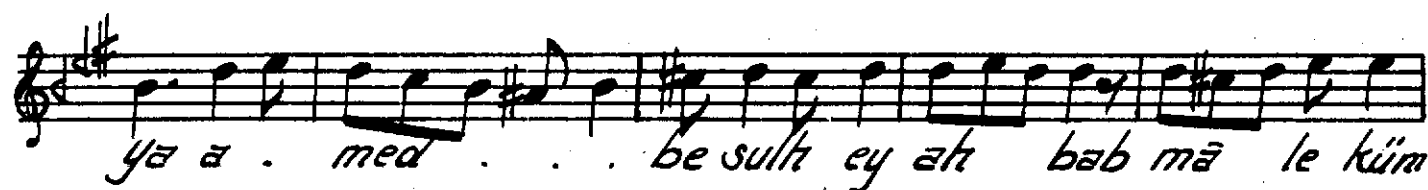
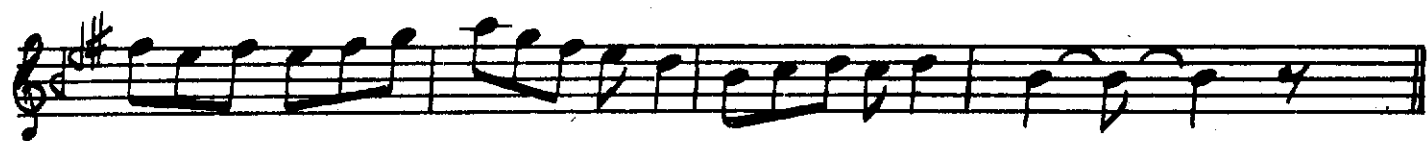
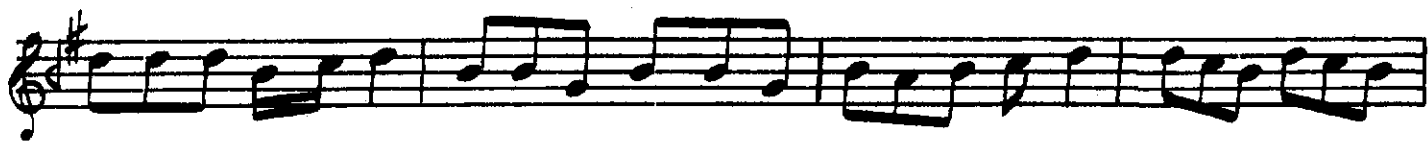
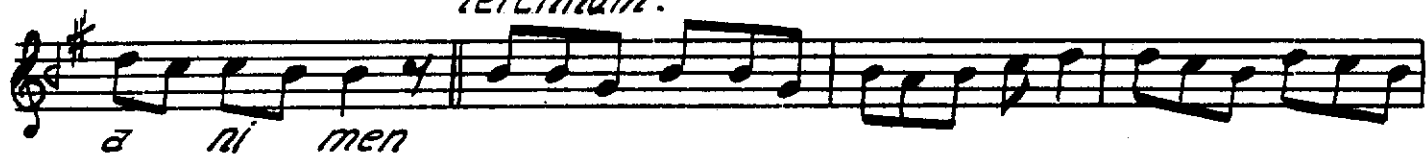
*Terennūm.*

Ban ki be ra med zi di lū cā ni men kā hi zi mā

su ka i pin hā ni men gūft te mū kur ba nī ki yem

yār gūft . . . a ni me ni . . . a ni me ni

*Terennüm.*





# Dördüncü Selâm.

Exfer.

Alh  
Alh

sul der tā men ni bi meni de mi

ni mi sul men tā zin ni de me se ni vem

ah  
ah

en yek der can di ci lū can se ved

can ved i sad ma ni me ni ca ni me ni

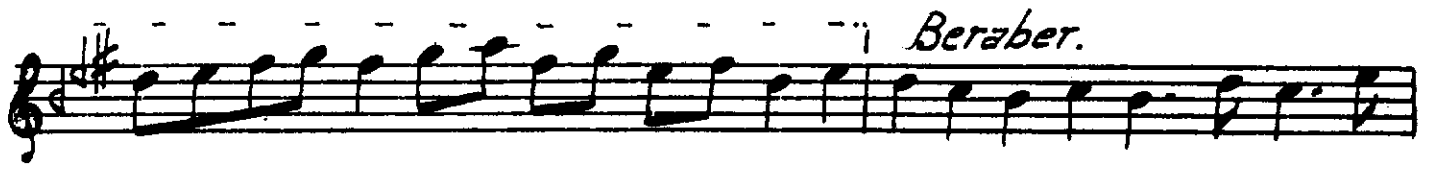
Alh

i ma ni meni

## Çon Pesrev Tamburi Hızır Ağz

Düyek.

yalnız bir saz tarafından.



*Beraber.*



*Son Yürük Semai.*

