

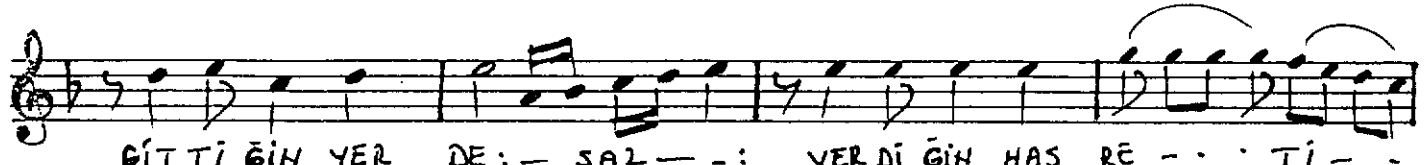
Düyek
P:256

KÜRDİ FANTEZİ
Ne olur çok kalma

Beste: Tahir Sıral
Güfte: Naciye Gülşin



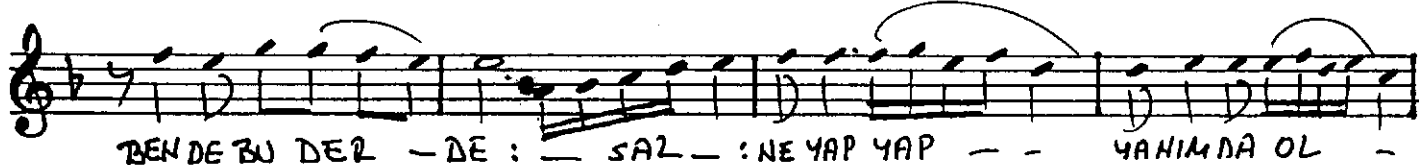
NE O LUR ÇOK KAL - - MA -



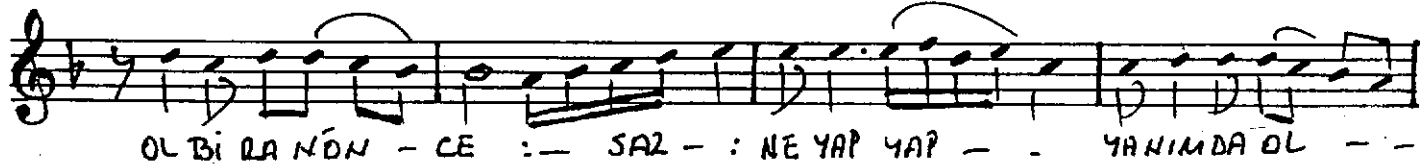
GİTTİ GİN YER DE : - SAZ - - : VERDİ GİN HAS RE - - - TI - -



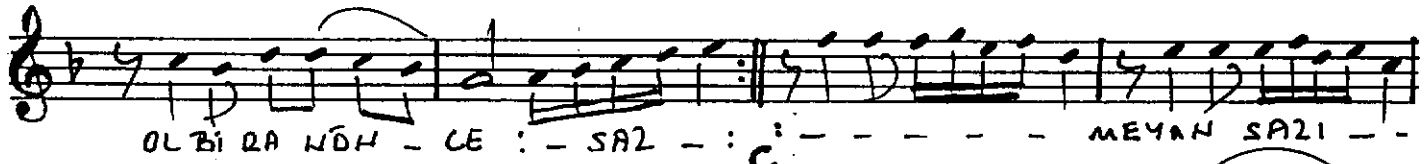
AL Bİ RAN ÖN CE : - SAZ YETE GEK SA BİR - - - ÇOK -



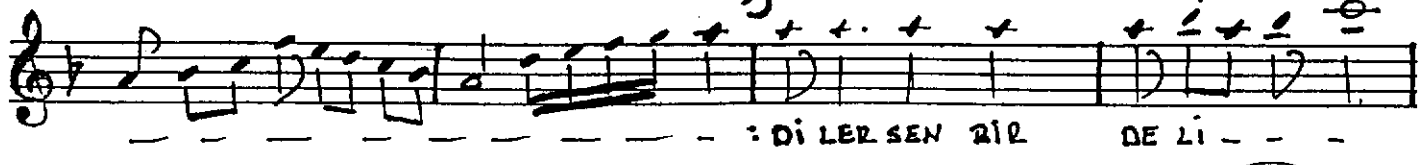
BENDE BU DER - DE : - SAZ - : NE YAP YAP - - YANIMDA OL -



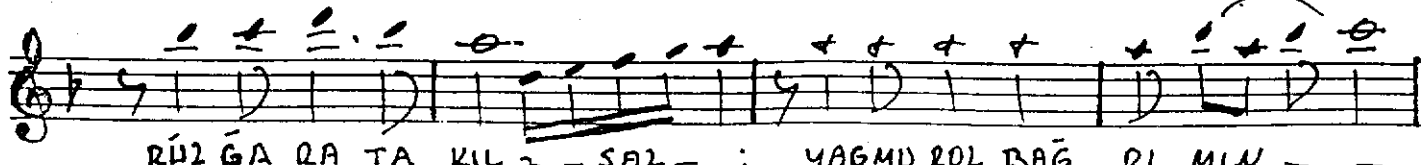
OL Bİ RA NÖN - CE : - SAZ - : NE YAP YAP - - YANIMDA OL - -



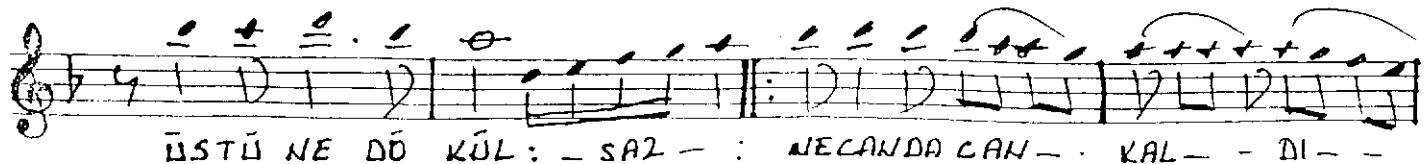
OL Bİ RA NÖN - CE : - SAZ - : - - - - - MEYAN SAZI - -



: Dİ LER SEN BİR DE Lİ - - -



RÜZ GÂ RA TA KIL - - SAZ - : YAĞMUR OL BAĞ RI MIN - -



ÜSTÜ NE DÖ KÜL : - SAZ - : NECANDA ÇAH - KAL - - DI - -

