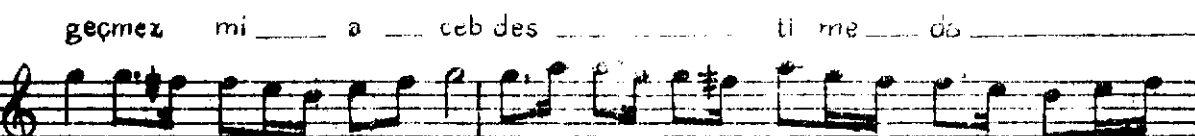
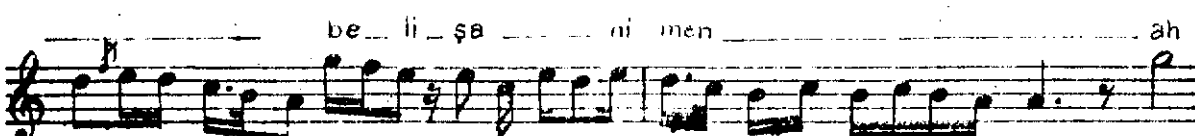
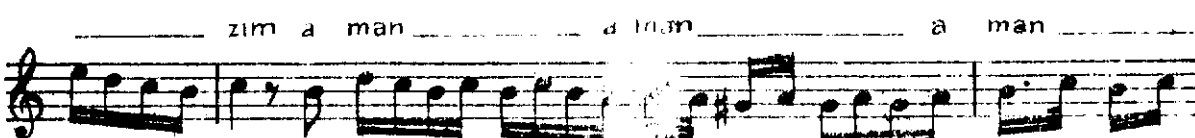
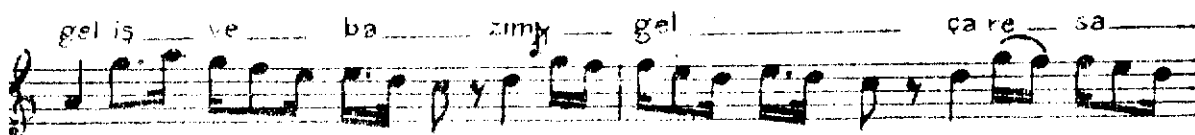
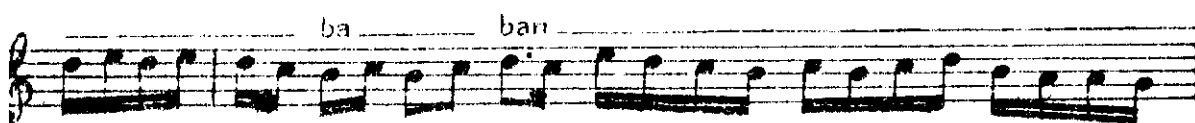
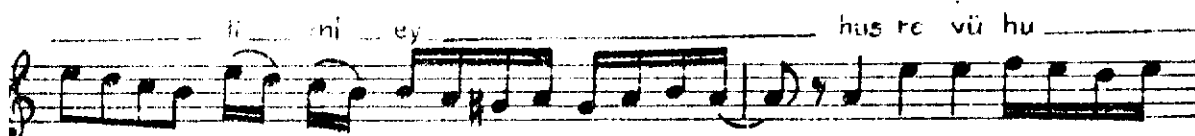
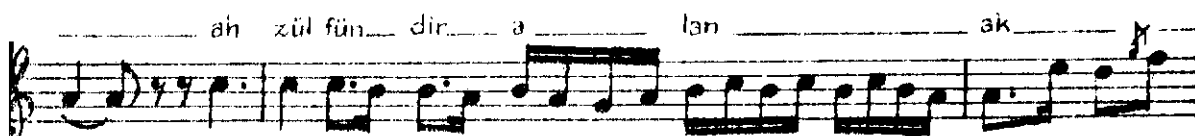
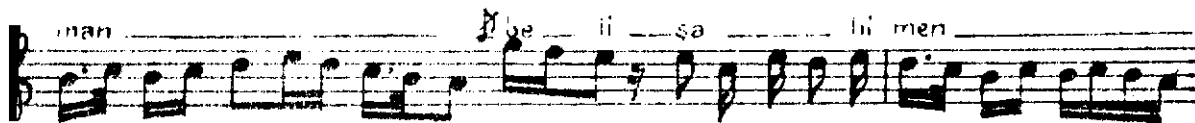
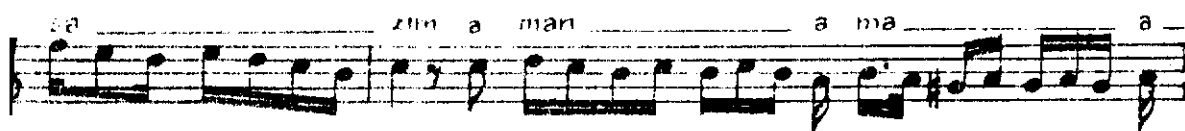
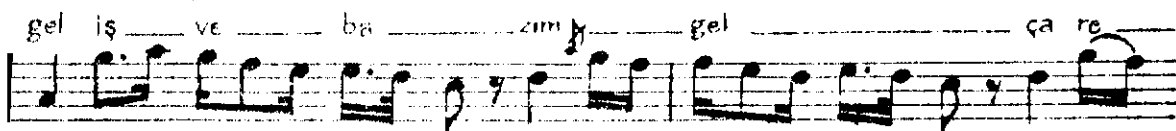
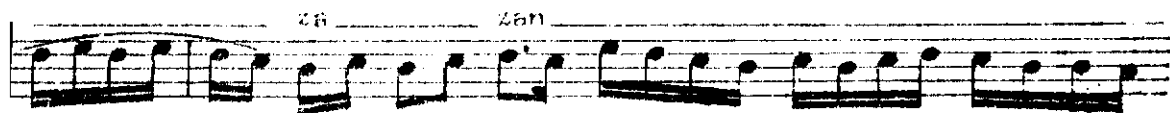
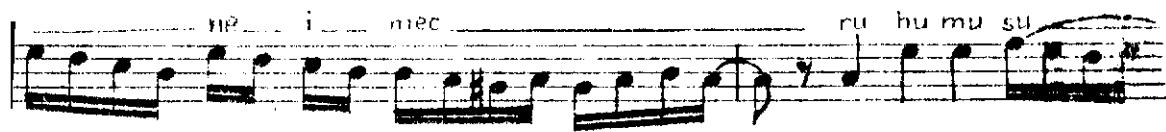
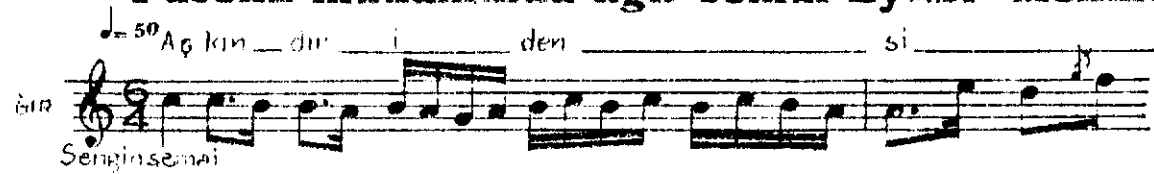


Puselik makamında ağır semai Eyubi Mehmed bəy

♩ = 50



(Mİ/AN)

ma ni vi sa lin gel iş

ve ba zim gel ça re sa

zim a man a man a man

be li şa hi men ah

sen pa di şa hi his ne kul

et di be be dev ra

ran ge iş ve ba zim

gel ça re sa zim a man a

man a man be li

ş hi men

(GÜFTESİ)

Aşkındır iden sinei mecrulunu suzan
 Zülfündür alan aklını ey husrevü huban
 Geçmezmi arab destime damanı visalın
 Sen padışehi hüsne kul etdi beni devran
 Gel işye bazarın gel çare sazın aman aman aman
 Beli şahimen