

günün başı *Seyran Sarfi*

MÜBTE LA

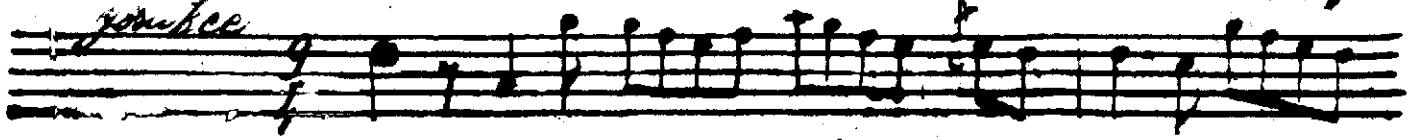
YI

M

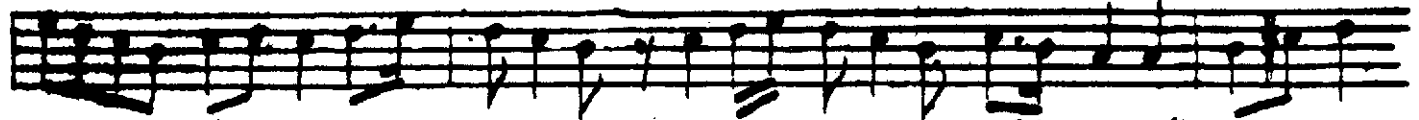
BE N O

no.

Hayat



YA RE OL DU SI NE M DA



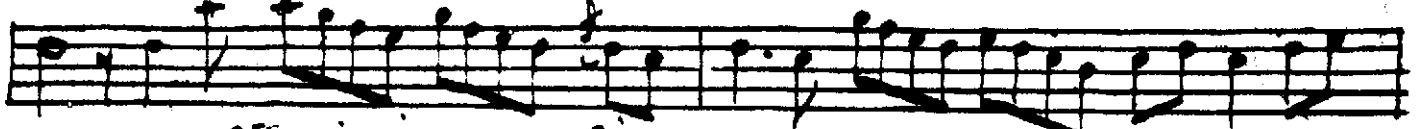
GI YA RE A CA NI



M ÇEŞ MI MA NU RU N SÜ ZÜ B YA



R YAK DI GÖ N LÜ M A Ş KI NA RE



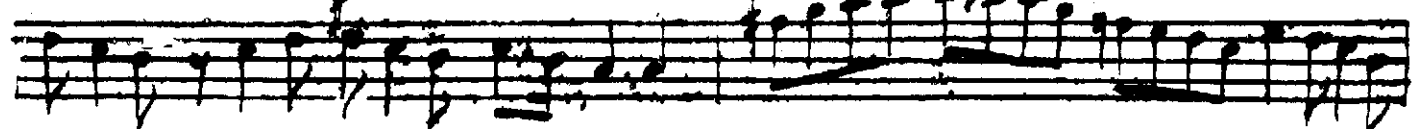
ÇEŞ MI ŞI RIN KA ŞI LA R KA



RE YOK SÖ ZÜ M TA BI RU H SA RE



A NA ME C BU RU M NE ÇA



RE

