

NIKRIZ NAKIŞ YURUK SEMÂİ

Beste: Kassam Zâde

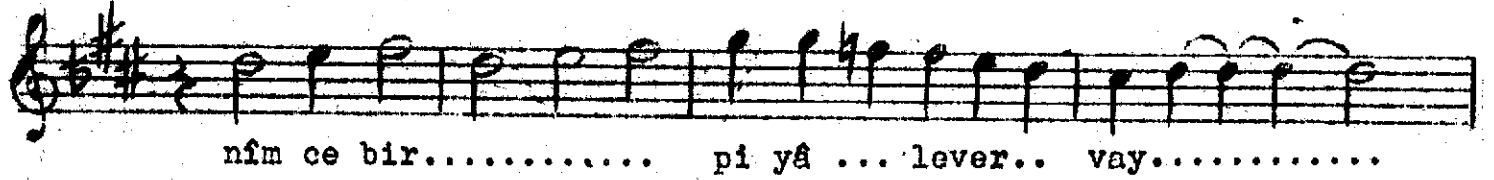
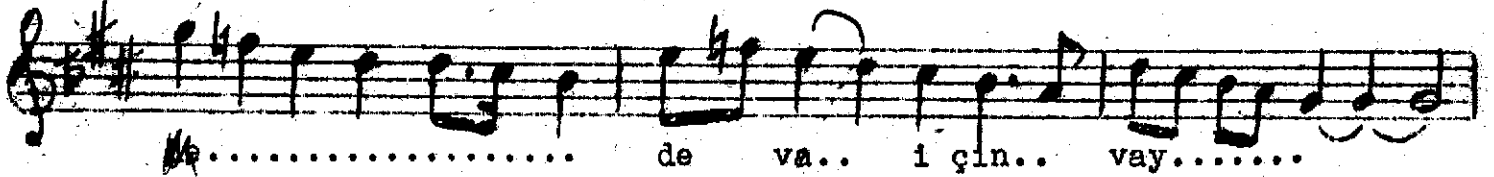
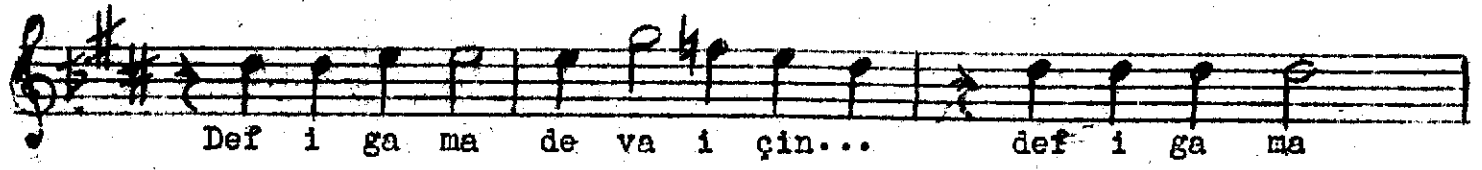
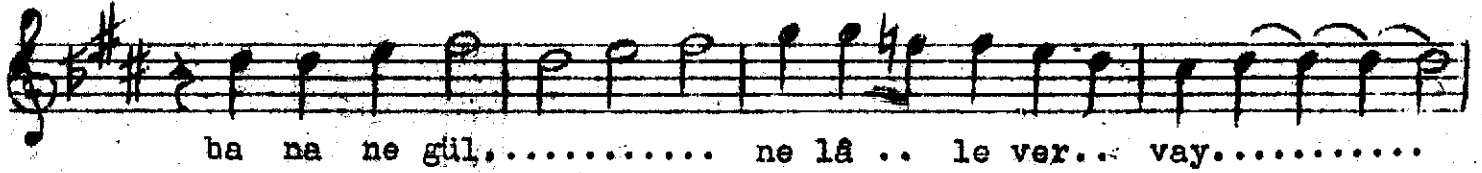
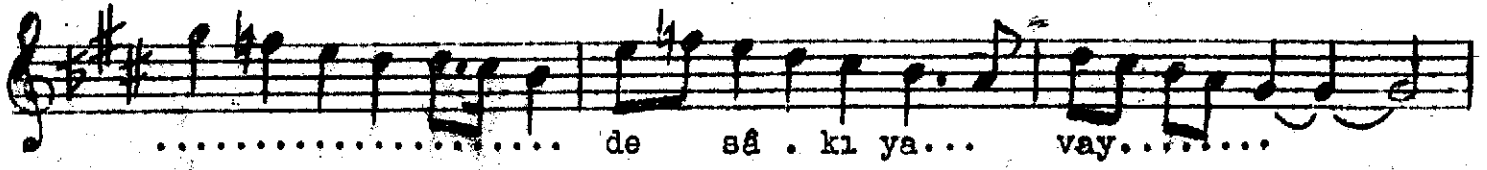
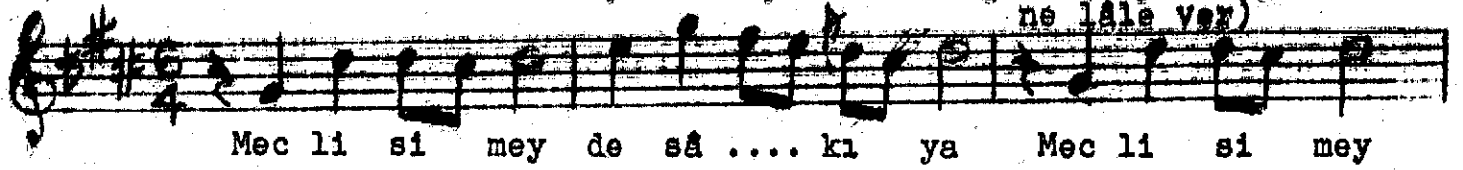
Güfte: Asım

Yürük Semâî

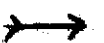
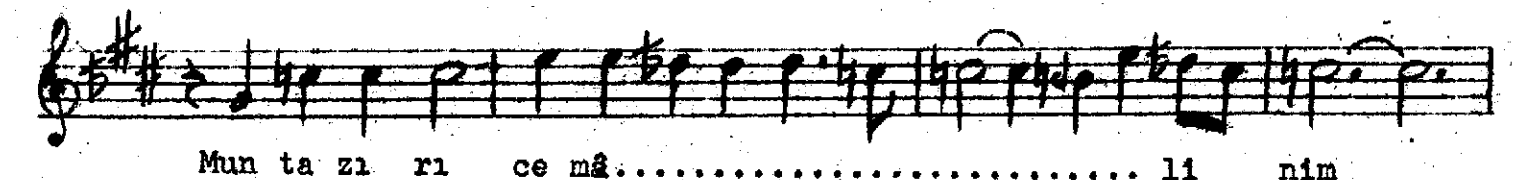
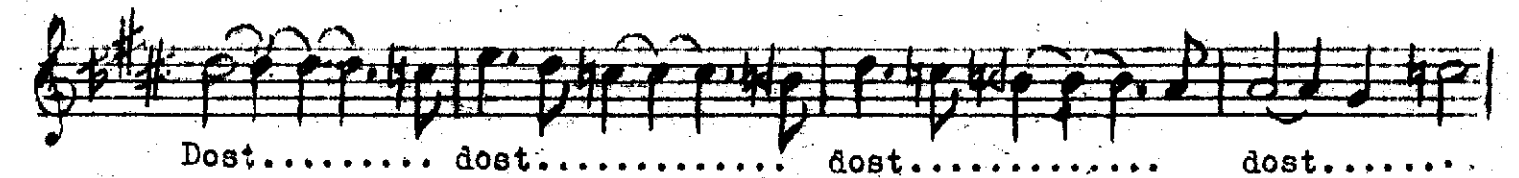
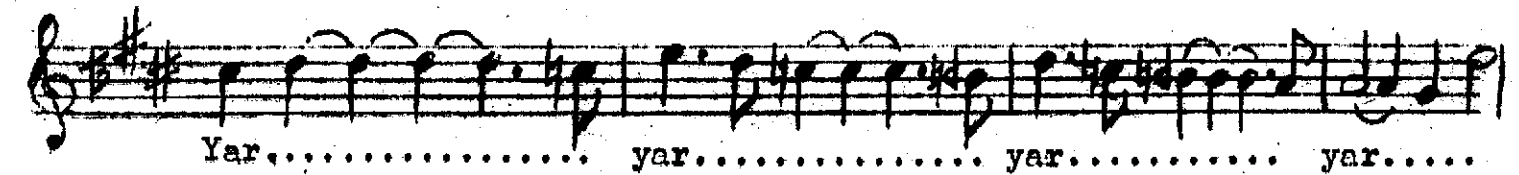
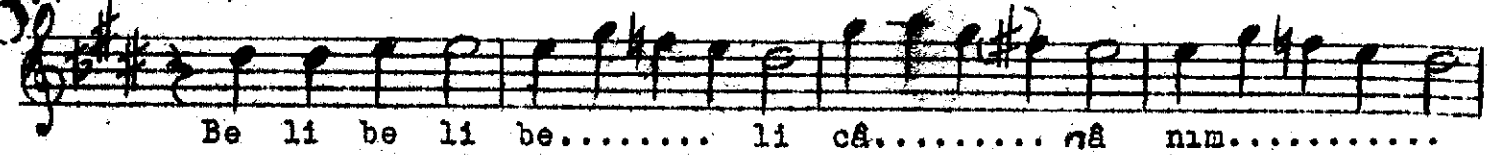
(Meclis-i meyde sâkiyâ bâna ne gül

(Suphi Engi'den-1/119)

ne lâle var)



(Terennüm)



yo lun da pa yi mâ..... li nim

Ba na te rah hum ey.. le kim.....

..... A şı kı bî me câ..... li

nim nim..... gel..... gel..... gel.....

gel nîm.. ce bir.... pi yâ... le ver vay.....
(Meyan) Bir i ki kat re ja le ver vay

Seb ze i pâ yi mâ li yim seb ze i pâ

yi mâ li yim... of Ben âe bugül.. şenin.. fe lek..

yar yar..... yar Değ me zi sem

su ver me ğe .. değ me zi sem su..... su ver me ğe..

vay..... bir i kikat..... reJâ.. le ver.vay.....

Meclis-i meyde sâkiyâ bâna ne gül ne lâle ver
Def'i gamâ devâ için nîmce bir piyâle ver
Sebze-i pâymâliyim ben de bu gülşenin felek
Değmez isem su vermeğê bir iki katre jale ver
Terennüm...

Mey - içki
Sâkiyâ- ey saki (içki sunan)
Nîmce - yarımca
Piyâle- kadeh
Pâymal- ayak altında kalmış
Gülşen- gül bahçesi
Jale - çiğ...