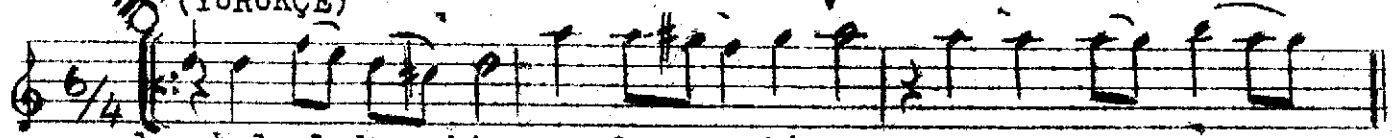


Yürük Semai

(YURUKÇE)

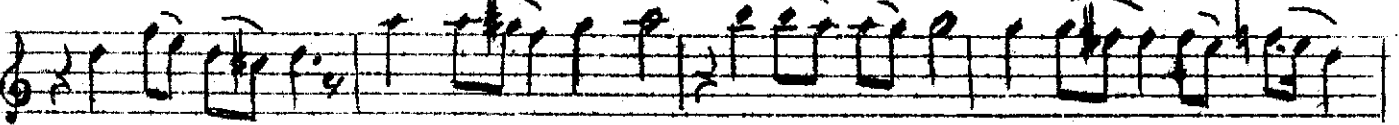
Kul oldum bir cefakâr Zekâî Dede Ef.



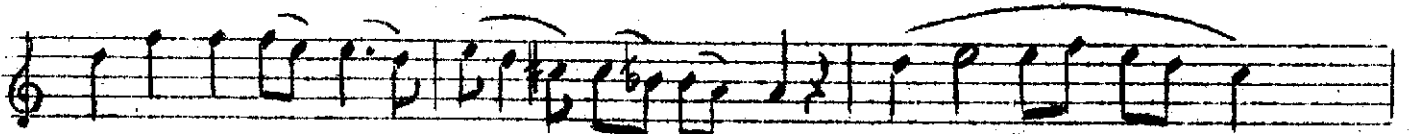
1- kul ol dum bir ce fa kâ re ci han ba ğın
2- Me ca lim yok durin kâ re fi ra kî ba
3- Gü zelle rin şerâf ra sı gö rüp vas lı



da gül fem dir da' gül fem dir
na ma tem dir na ma tem dir
na hür rem dir na hür rem dir



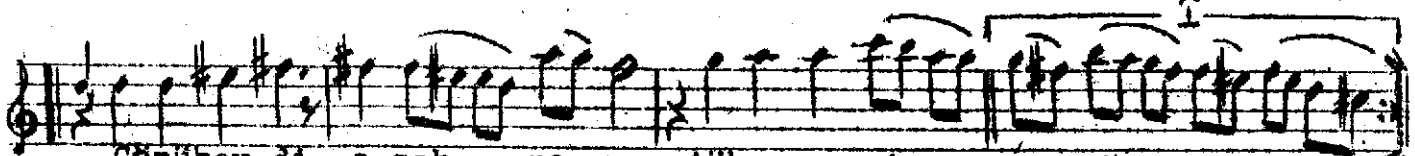
Be li be li yel lel li yar be li be li ye le li dost



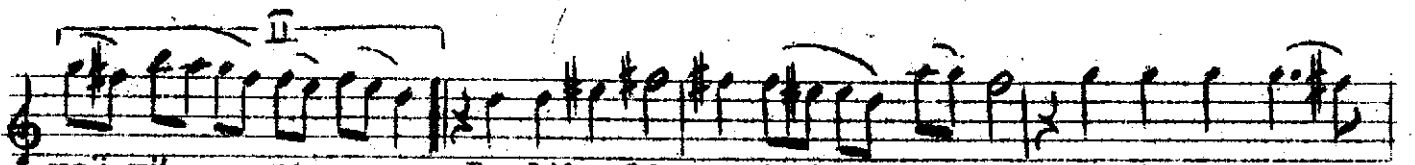
ya lâ ye le lel lel le le li yar



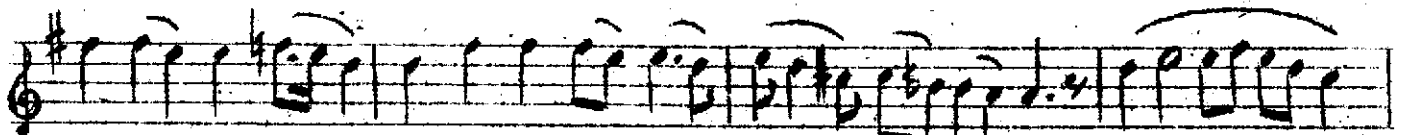
yar yar yar beli ya rim



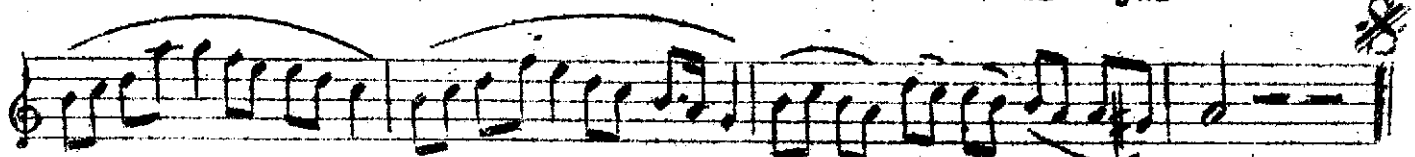
Gönükev di o şeh na zî tükenez şî ve vü na zî



ve' vü na zî Be libe li ye lel li yar Be li be li



yele li dost ya lâ ye le lel lel le le li yar



yar yar yar be li ya rim

Kul oldum bir cefakâr cihan bağında gülfemdir
Mecalin yokdur inkâr firakı bana matemdir
Gönül sevdi o şehnazı, tükenez şirvî nazı
Güzellerin şerâfrazı gören vaslın