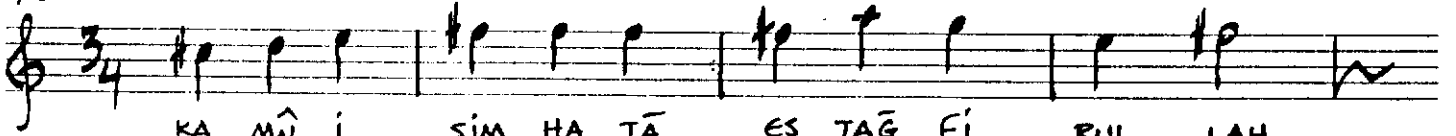


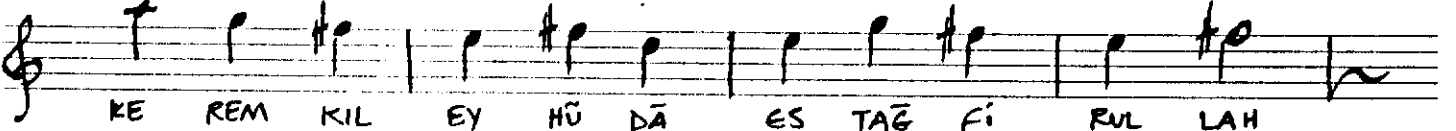
ENC İLÂHÎ

ALİ UFKÎ

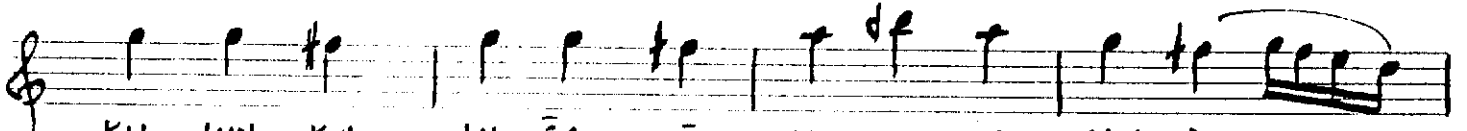
♩



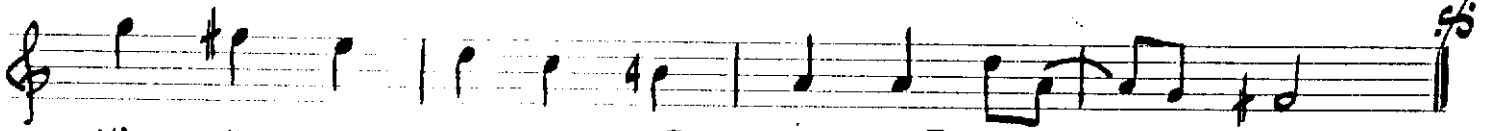
KA MŪ İ ŞİM HA TĀ ES TAG Fİ RUL LAH
FA Zİ LET SAN DI Ğİ E MÎ Nİ NEF SİM
A LUB GÜN LŪM SÎ VĀ DAN YŪŖ ÇE VİR DİM



KE REM KİL EY HŪ DĀ ES TAG Fİ RUL LAH
Hİ CĀB OL DU BA NA ES TAG Fİ RUL LAH
DÖ KŪB HAK DAN YA NA ES TAG Fİ RUL LAH



KU LUN KUL LU ĞA LĀ YIK O LA SAN DİM
NE DĀ MET LE NE DĀ NEM DER SİN AL DİM
A NUB TAK SÎ Rİ Nİ MEV LĀ YA ŐŖ RET



YA NİL DİM BEN GE DĀ ES TAG Fİ RUL LAH
TU TUP SEM Tİ FE NĀ ES TAG Fİ RUL LAH
Dİ DĀ İM UF Kİ C ES TAG Fİ RUL LAH

ALİ UFKÎ 'M.S.S.'den
aktaran: RŪHĀ AYANGİL