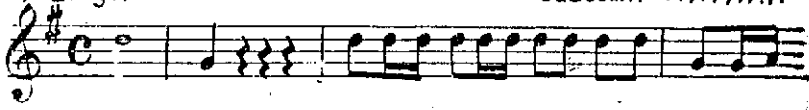


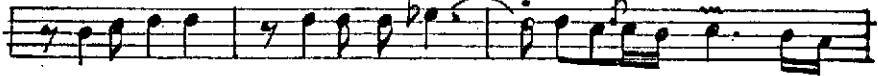
LEYLÂ İLE MECNUN FİLMİNDEN  
**AŞK YOLUNDA**

Sözi:  
Vecdi Bingöl

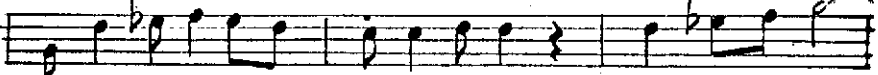
Müzik:  
Sadettin KAYNAK



Aşk yo lunda bağ rı ya nık yol cu la



r var ma dan bi r kay na ğa gün sol du

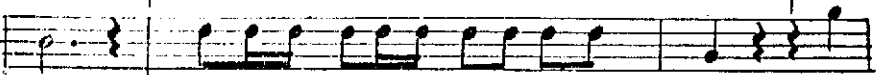


u fuk da ka rar dı su

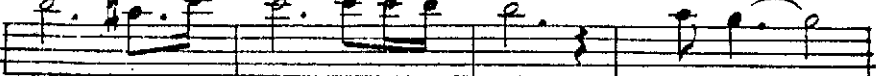
lar de ğ di se ra p du da



ġa ——— SAZ ——— mec



nu ——— n ——— be la



o la ġ in da ——— SAZ ———



[illegible]


ö lüm m ya ta gin da AĞIR

TERRARINDA BİR OKTAV  
PESİNDEN

gör dü gü si teler ru hu nu Sar.

di

ARABIAN  
PESTEN



o bir goncaı di soldu sa rar di

ARANAĞME YERİNDEN *a* SIKI RI tən nə də cən

SOLO GAYET AĞIR

me va r di meo nu no el i ve da el ve da

HERBARRER

Handwritten musical notation for the vocal line. The lyrics are "a el ve da a gi di so". The melody is written on a single staff with a treble clef. The notes are: a (half note), e (quarter note), l (quarter note), v (quarter note), e (quarter note), d (quarter note), a (quarter note), a (half note), g (quarter note), i (quarter note), d (quarter note), i (quarter note), s (quarter note), o (half note). There are slurs over the first group of notes and the last group of notes.