

# SÜZ'NÂK ŞARKI Beste: ALÂEDDİN YAVAŞÇA

Güfte: TUMAY BAŞER UÇOK

Beste Tarihi: 17 Ekim 2002  
VişNEZÂDE

SEMÂî

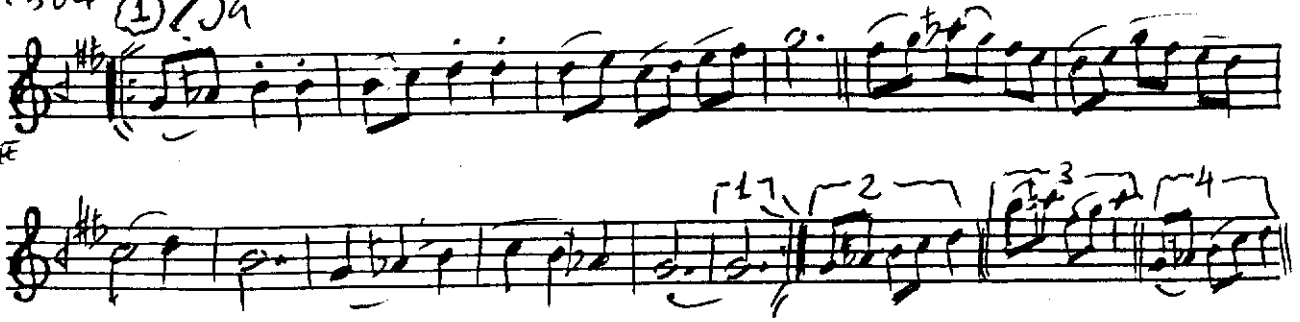
♩ = 120

A. Y.

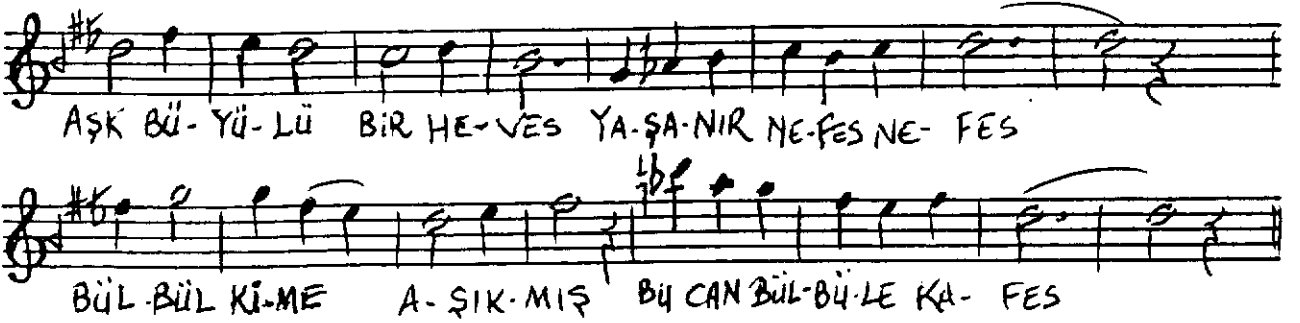
Op. 504

①

(-) RANÂĞME

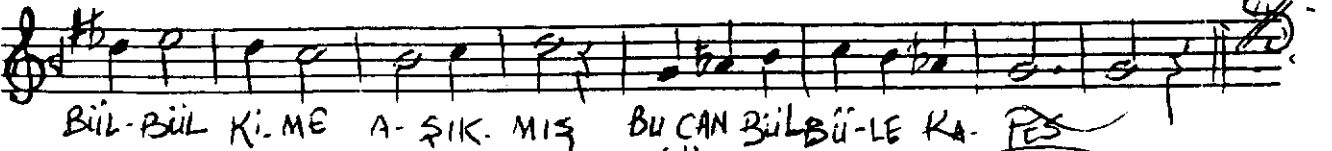


②



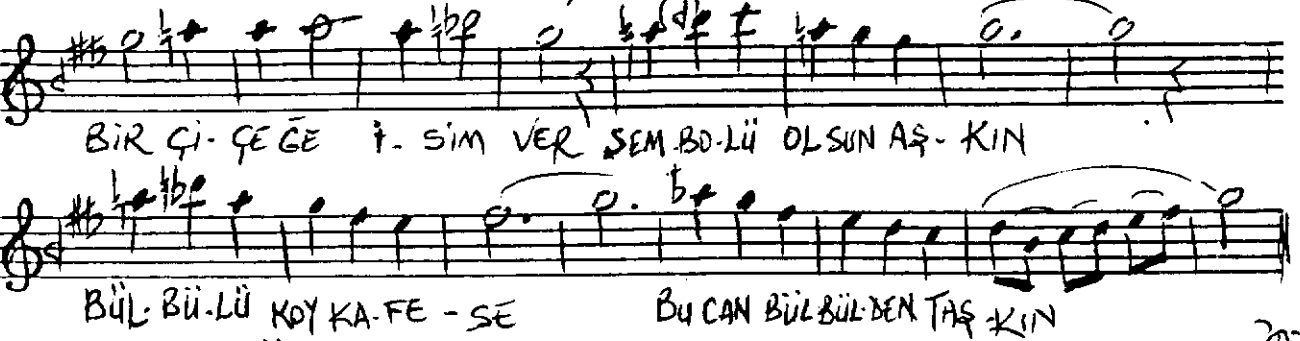
AŞK BÜ-YÜ-LÜ BİR HE-VES YA-ŞA-NIR NE-FES NE-FES

BÜL-BÜL Kİ-ME A-ŞIK-MIŞ BU CAN BÜL-BÜ-LE KA-FES



BÜL-BÜL Kİ-ME A-ŞIK-MIŞ BU CAN BÜL-BÜ-LE KA-FES

③



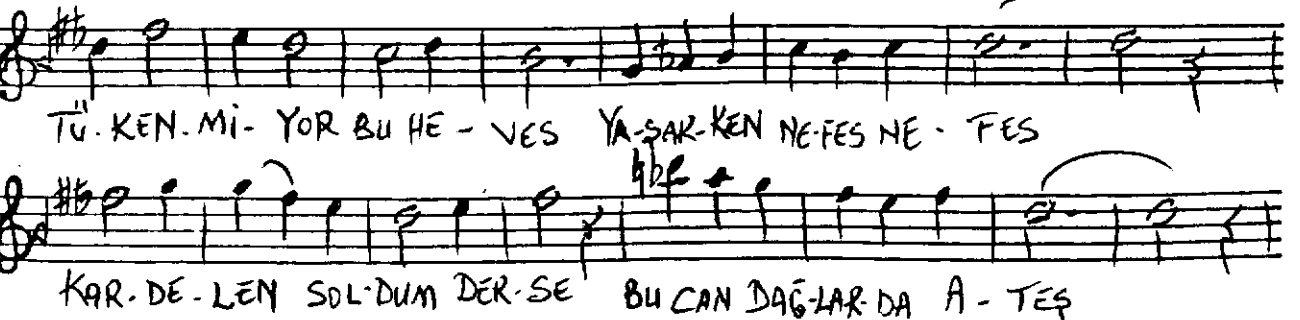
BİR Çİ-ÇEĞE İ-SİM VER SEM-BÖ-LÜ OLSUN AŞ-KIN

BÜL-BÜ-LÜ KOY KA-FE-SE BU CAN BÜL-BÜLDEN TAŞ-KIN



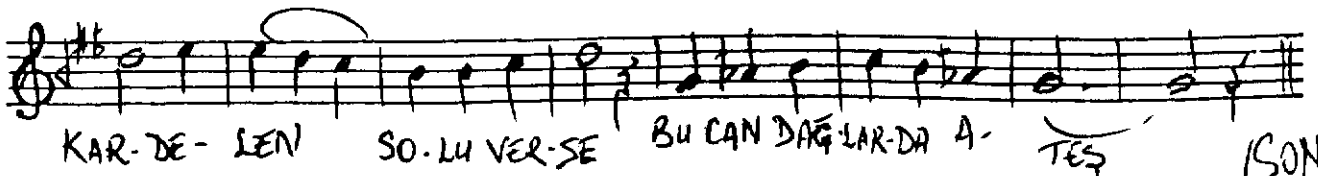
BÜL-BÜ-LÜ KOY KA-FE-SE ... BU CAN BÜL-BÜLDEN TAŞ-KIN

④



TÜ-KEN-Mİ-YOR BU HE-VES YA-ŞA-KEN NE-FES NE-FES

KAR-DE-LEN SOL-DUM DER-SE BU CAN DAĞ-LAR-DA A-TEŞ



KAR-DE-LEN SO-LU VER-SE BU CAN DAĞ-LAR-DA A-TEŞ

(SON)