

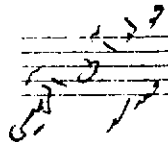
Türk

MAKAMI  
Beyati

BESTEKÂRI  
Kosul ?

Handwritten musical notation in staff notation, featuring lyrics in Turkish. The notation is written in a style that combines Western staff notation with traditional Turkish musical notation (Makam). The lyrics are:   
a lek sa na   
in sü me lek in sü me lek   
fa re sul ol lah da hi   
lek fa re sul ol lah   
da hi lek

II. XII - 947



Cüneyt KOSAL