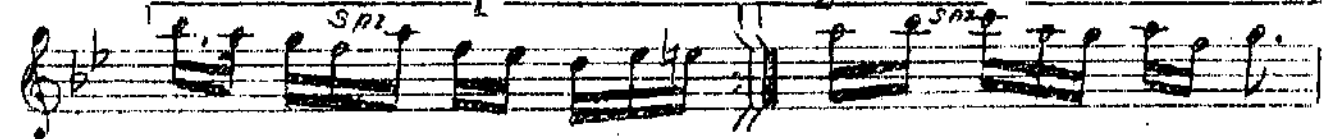
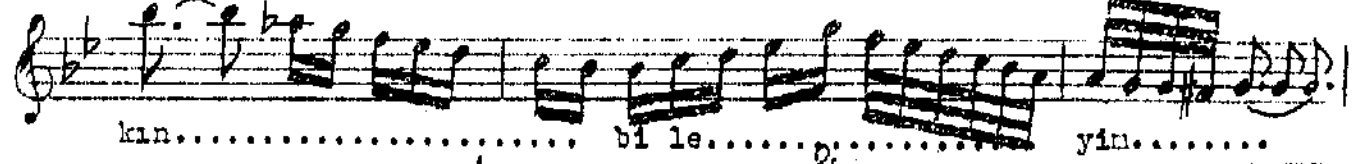
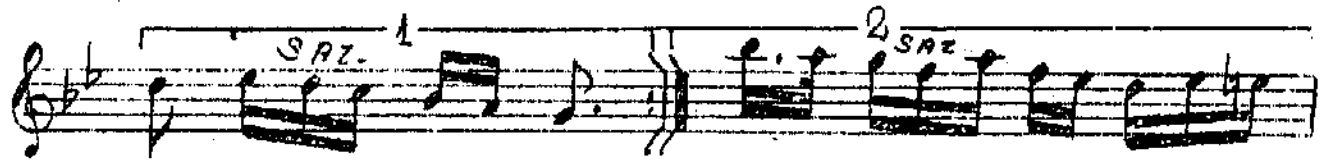
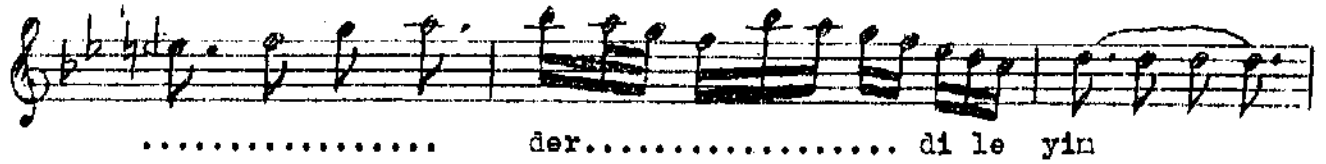
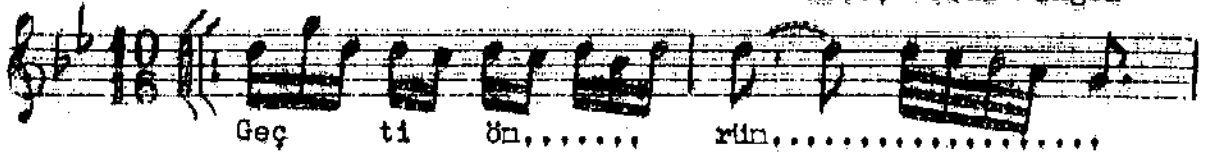


Usulü; Curcuna

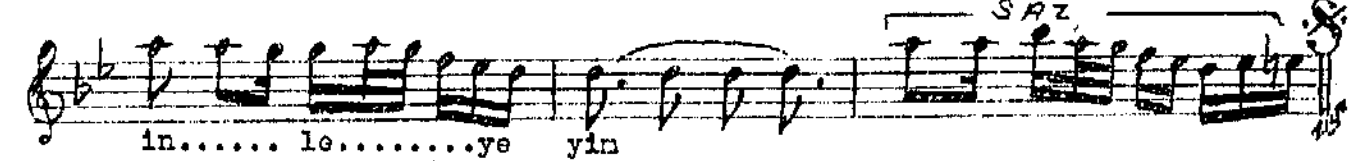
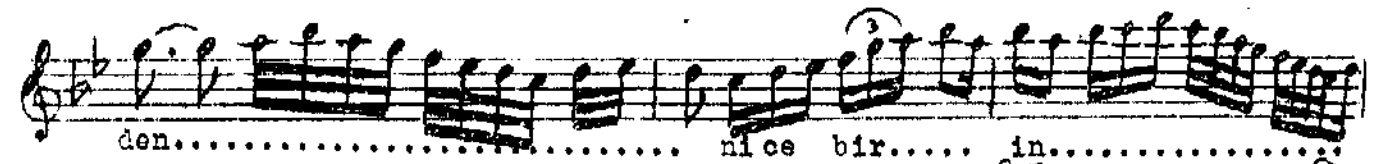
NIHAVEND ŞARKI

Beste; Selâhaddin Panâz

Güfte; Veedî Bingöl



(Meyan)



Geçti ömrüm yine hâlâ ben o bin derd ileyim  
Söyle dermânını ey sevgili, aşkın bileyim  
Böyle hicrân eleninden nice bir, inleyeyim  
Söyle dermânını ey sevgili, aşkın bileyim.