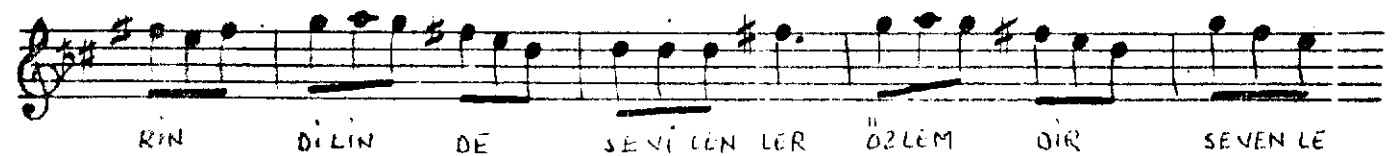
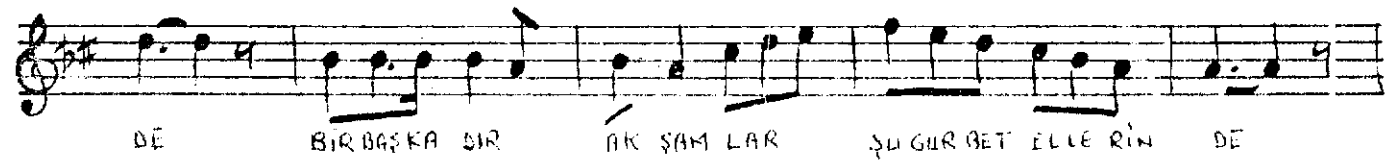
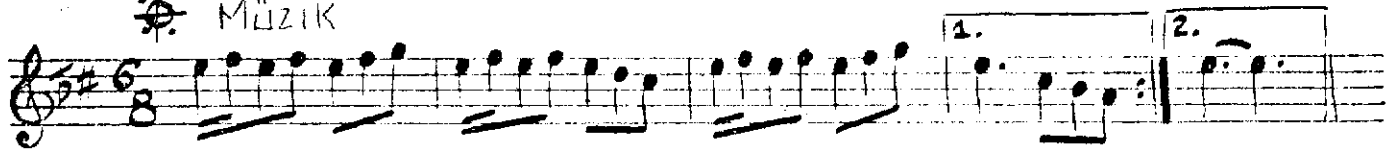


HİCAZ ŞARKI
GARİPLEŞİR GECELER

BESTE = YUSUF NALKESEN
SÖZ = VELİ BAKIRLI

☼ Müzik



RIN BIRYAN GA

1. A CI HAS RET

2. A CI HAS RET EL BET SA RAH O LA

CAK EL BET SA GAH A LA CAK — SAZ — SPB RET GÜ NÜL

Handwritten musical notation on a five-line staff. The notation consists of vertical stems and horizontal lines, with some stems having small circles or dots at the top. The notation is organized into four measures. The first measure contains the text 'SAB RET GO NUL' below it. The second measure contains the text 'SAB RET GO NUL' below it. The third measure contains the text 'SEN SAB RET' below it. The fourth measure contains the text 'SEN SAB RET' below it.

Handwritten musical notation on a single staff, featuring a treble clef and a key signature of one sharp (F#). The melody is written in a style characteristic of early 20th-century Turkish folk music. The lyrics "SAB RET GÖNÜL SİN SAB" are written below the staff, corresponding to the notes. The notation includes various note values, rests, and a repeat sign.

2.
AKSAYO LUR KAPINIR ÜMİTLE RINKAPI SI ÜMİTLERİNKAPI SI

A NA BA CI HAS RE TI BAŞLAR GÖ NÜLSANCI SI BAŞLAR GÖ NÜLSANCI

SI GÖKÜVE RİR İĞİ NE YALNIZ LI GIN ACI SI


 ÇÖKÜ VE RİR İÇİ NE YALNIZLIĞIN ACISI