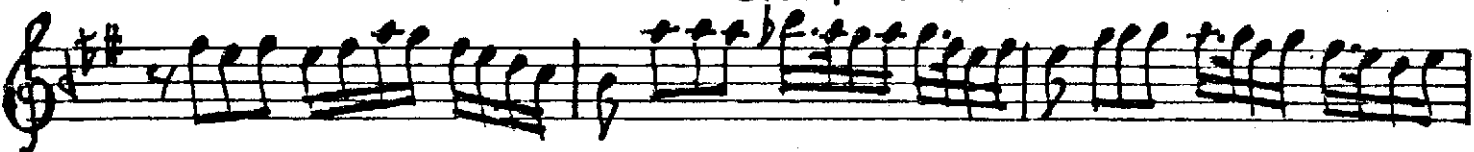


HÜZZAM ŞARKI  
-Fedâ sana sevgilim-

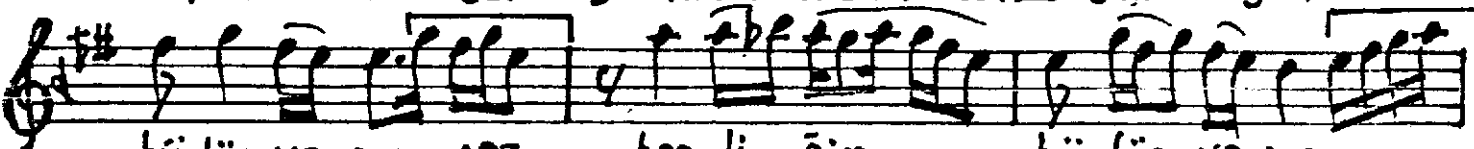
Muzik: Aladdin Sensoy  
352 : Kenan Altarici



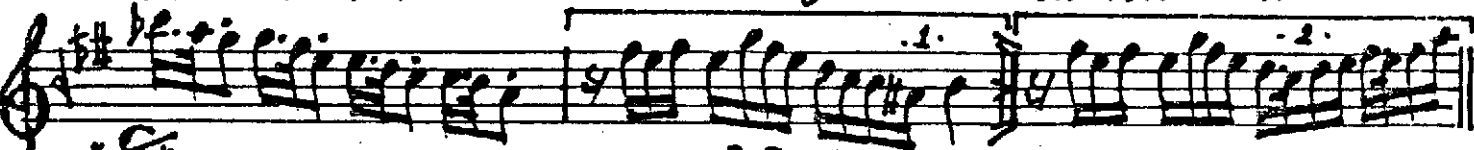
## GİRİŞ SAZİ



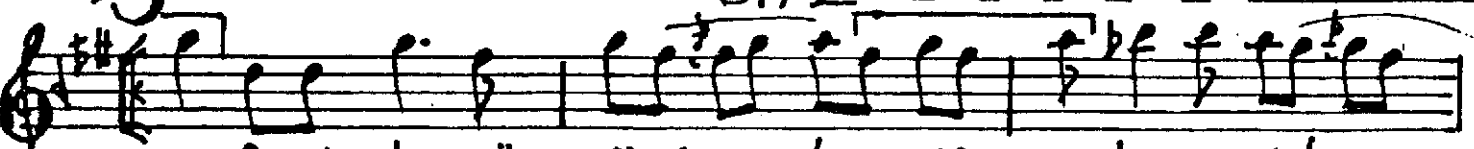
Fedā se.nā sev . . gi . lim \_\_\_\_\_ SAZ . . . . . ben . li . ğim



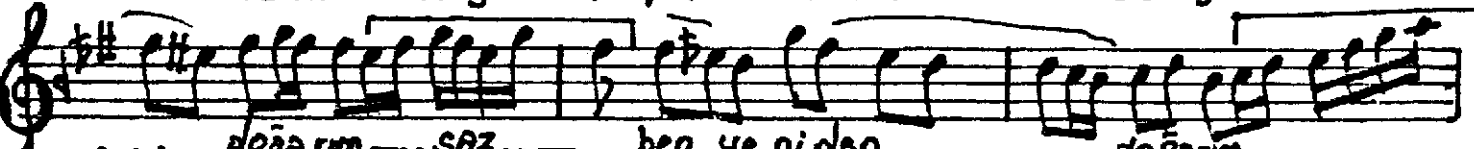
bü.tün va .rim .saz .—      ben .li . .gim      bü .tün va rim



3A 2

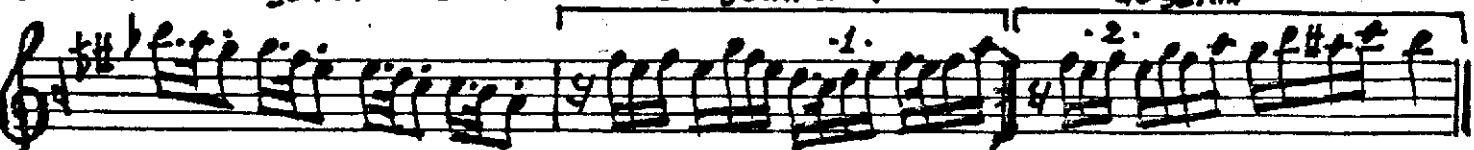


Se.ni her gö .. rüşüm .. de ... SAZ .. — ben ye.niden

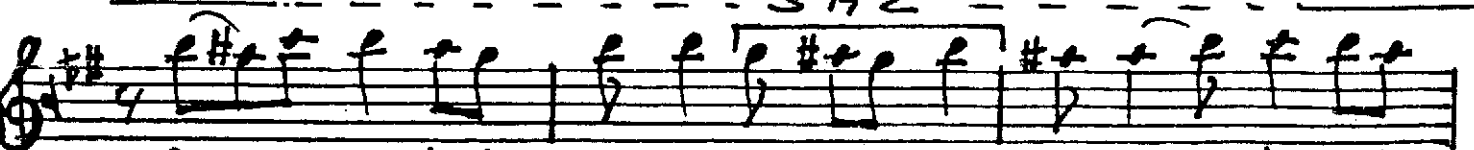


doğarın...SAZ... — ben ye.niden

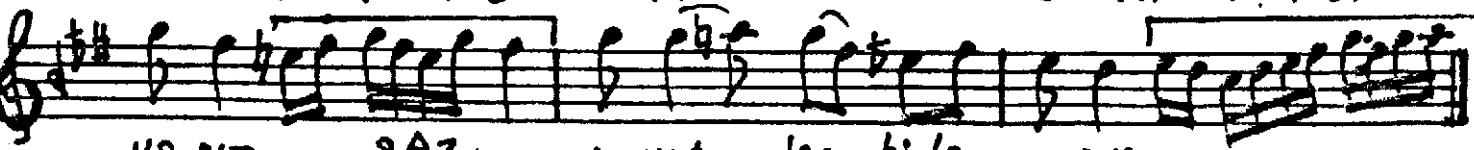
do Garin



3 A Z

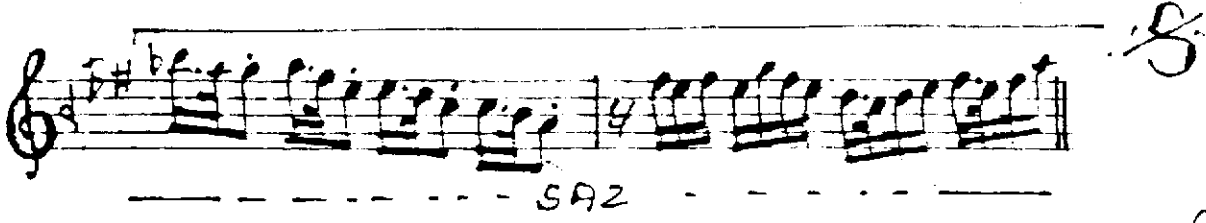


Sən. siz əşk bi.le      i .nen — .SƏZ —      u .mut — .lar bile



ya.rim ... SAZ .. — u.mut .. lar bi./e ya.rim

Söhpe : - 2 -



*Amir*

Fedā sana sevgilim; benliğim, bütün varım.  
Seni her görüşümde; ben yeniden doğarım.  
Sensiz aşk bile, inan; ümutlar bile yarım.  
Seni her görüşümde; ben yeniden doğarım.

Kenan Akarsu