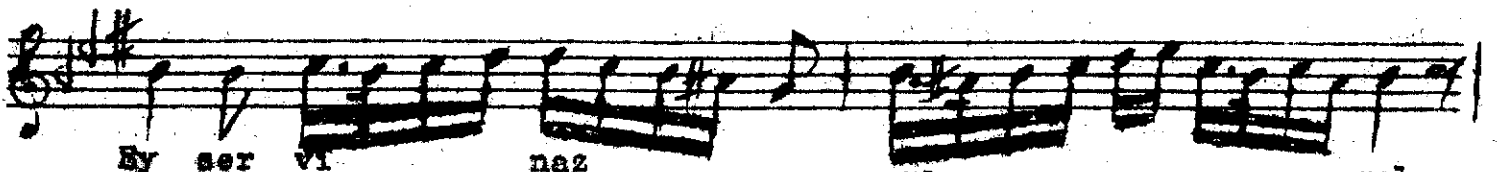
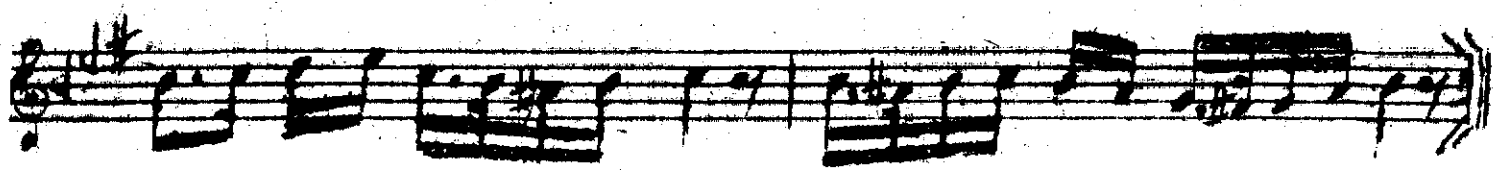
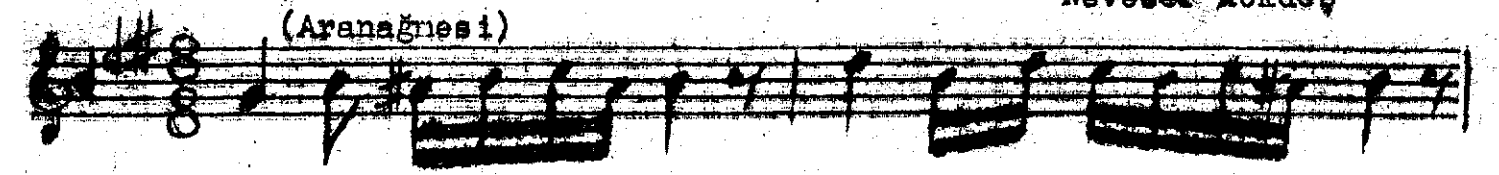


(Aranânesi)



Ey ser vi naz gül se ne gel



han den le han dan o la yın ben

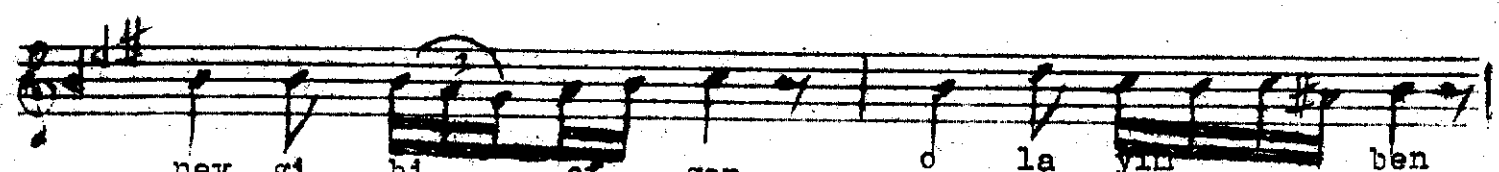


---SAZ---

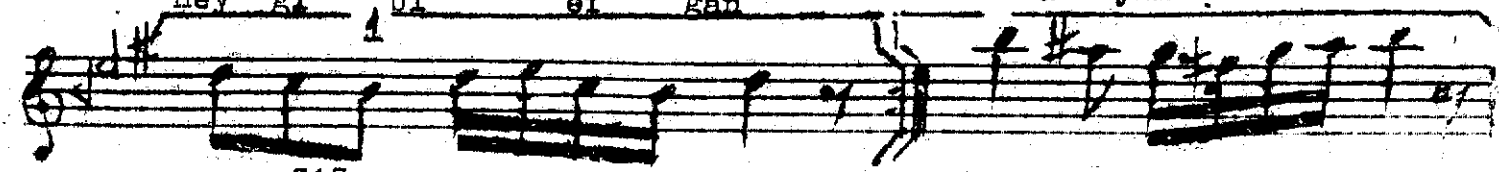
---SAZ---



Bir zör re na zın gör ney le



ney gi bi er gan o la yın ben

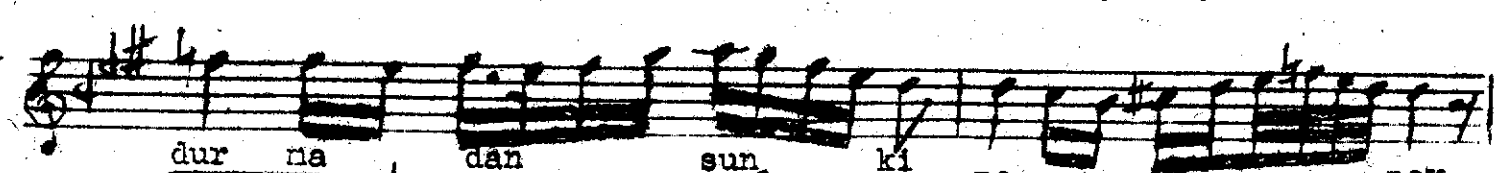


---SAZ---

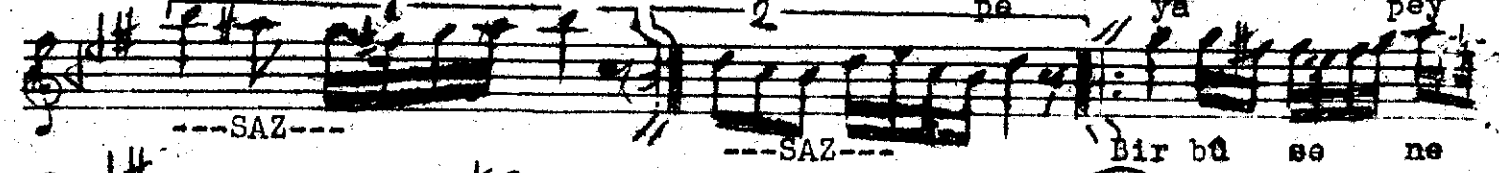
---SAZ---



Des tin de ki câ ni gül gû nu



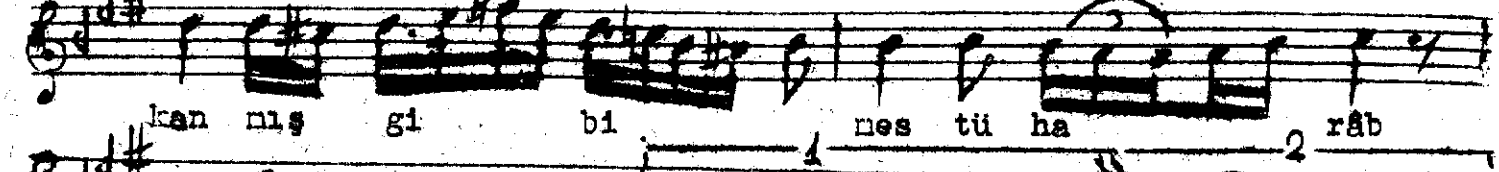
dur na dan sun ki pe ya pey



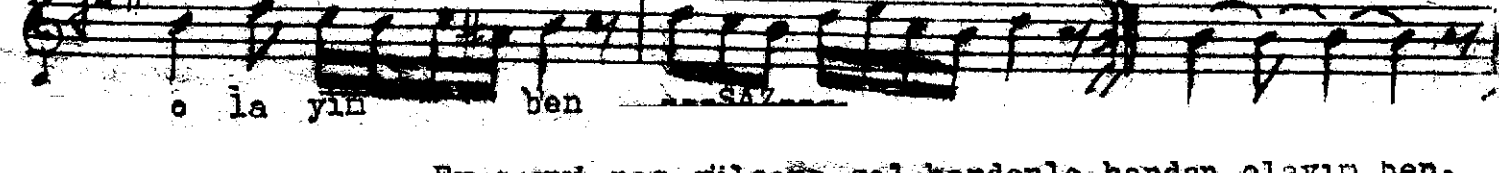
---SAZ---

---SAZ---

Bir bû se ne



kan nış gi bi nes tü ha râb



o la yın ben

Ey servi-naz gülşene gel handenle handan olayın ben.