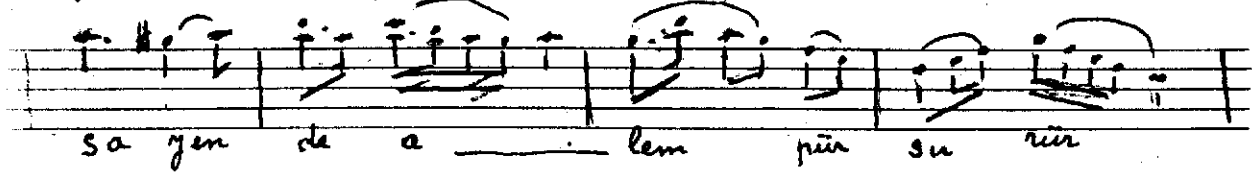
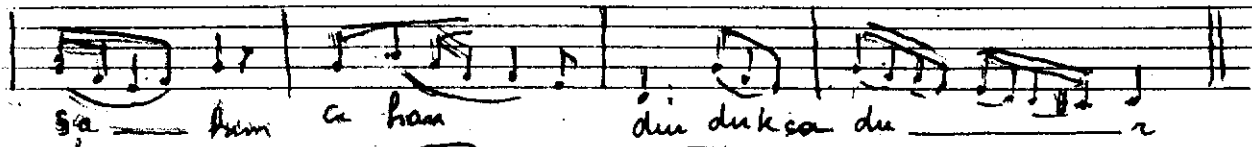
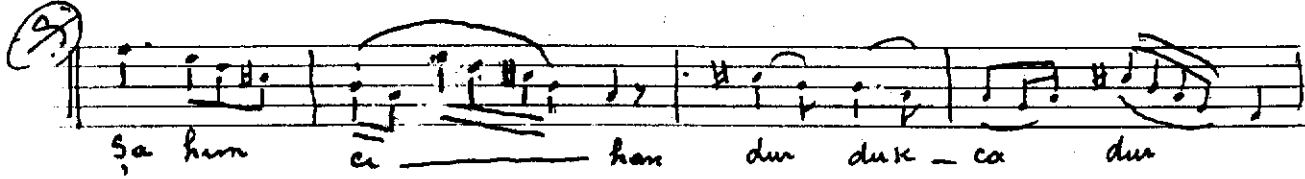
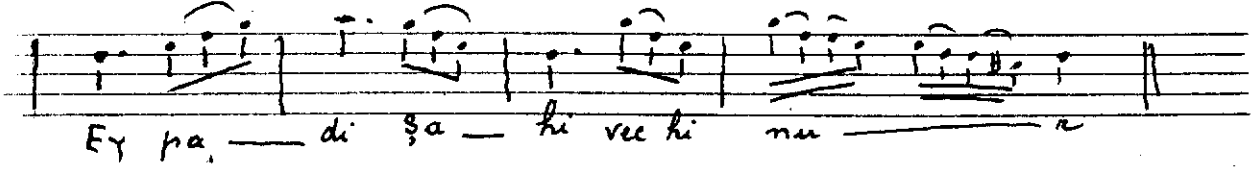
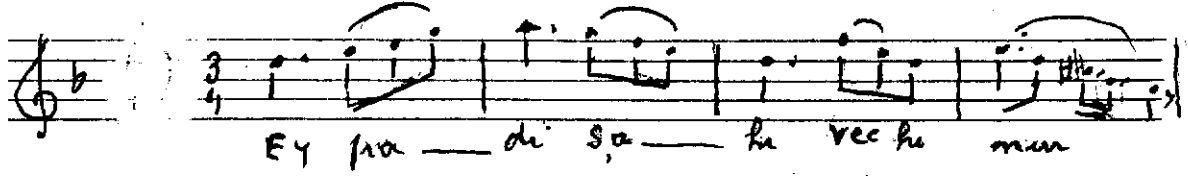


Usul:

Sema

Ferahfeza şarkı

Rifat Bey  
(Rifat Fırsandan)



Ey Pâdişâh-ı vec-h-i nür

Şâhin cihan durdukca dur

Sâylene âlem pür-sürüs

Şâhin cihan durdukca dur

Lütfunla ey yâh-ı cihan

Kıldın cihânı kâmrân

Zevk u meserrefle kemân

Yâhin cihan durdukca dur.

Z.A.



imzalı