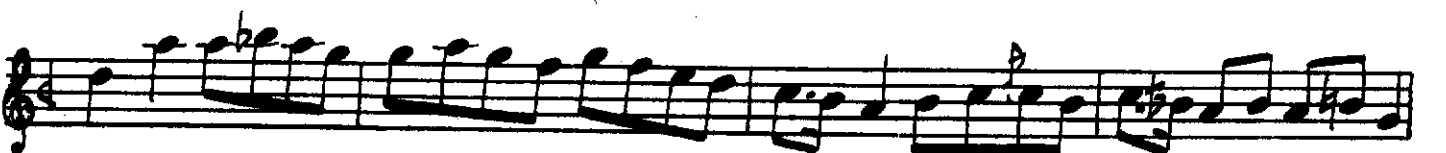
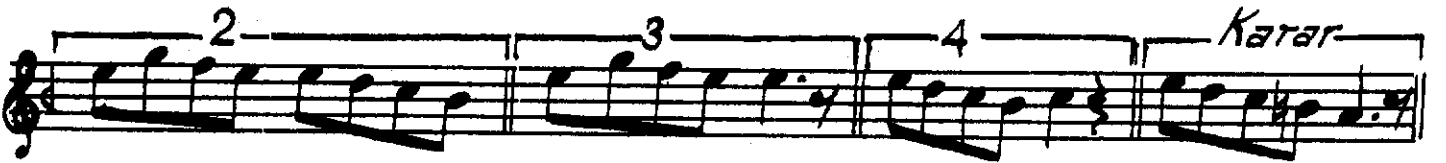
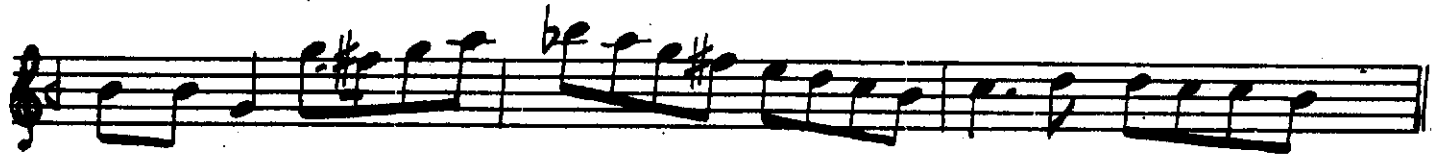
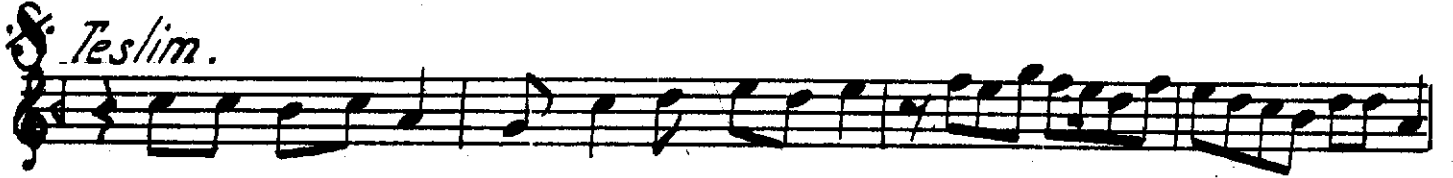
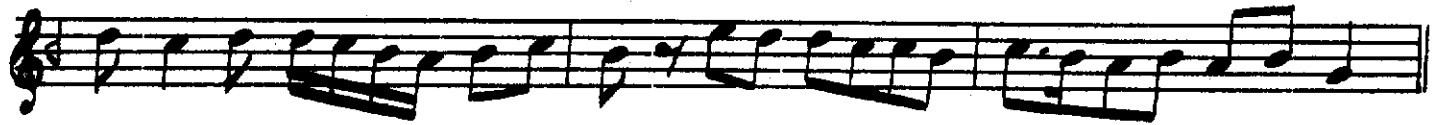


Devr-i kâbir

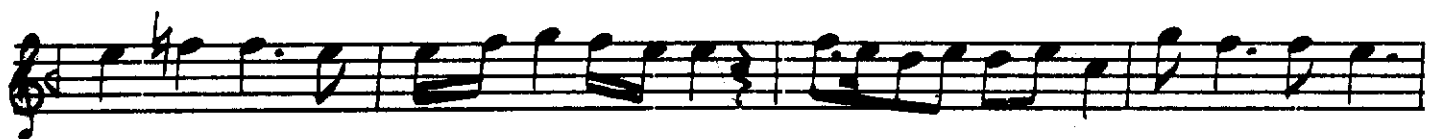
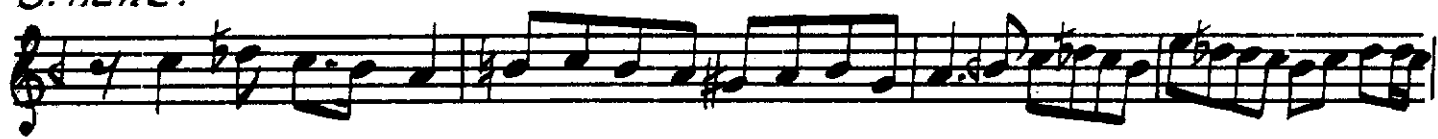
BEYATİ BÜSELIK PEŞREVI

Derviş Halil Can

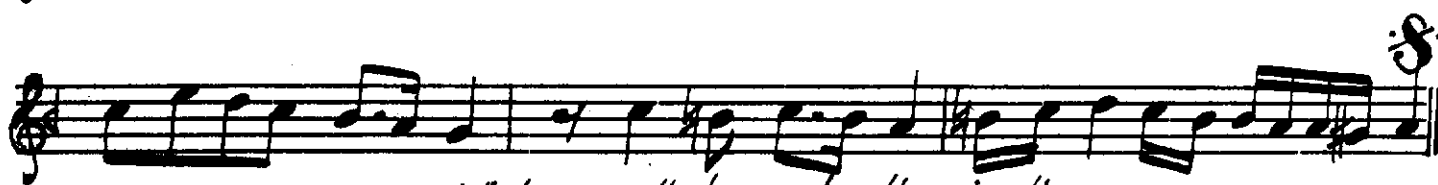
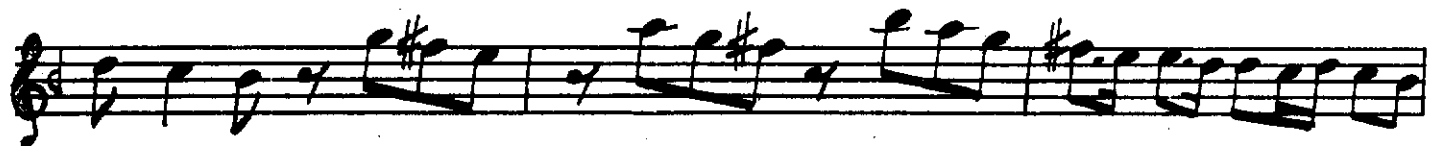




3. Hane.



4. Hane.



Not: 3. cü hane teslimsizdir.


 Ey de ra ver de ci ha nı rā . . . zı nāy . . .


 hey yi hey sul tā nı men . . . hey yi hey hūn kâ rı men


 Ban ki nā yū ban ki nā yū ban . . . ki nāy . . .


 Hey yi hey sul tā nı men . . . hey yi hey hūn kâ rı men


 Hod'hu dā yest'in he me ru pu . . . su çist . . .


 hey yi hey sul tā nı men . . . hey yi hey hūn kâ rı men


 mi ke se deh li' hu dā rā tā . . . hu dāy . . .


 hey yi hey sul tā nı men . . . hey yi hey hūn kâ rı men


 hey yi hey tā nā yi men . . . hey yi hey zı bā yi men


 yār . . . yār . . . yār yū re gīm yār . . .


 yār yū re gīm del ci ğe rim gör ki ne ler var . . .


 yār . . . yār . . . yā re hā ber var

ey nu şî ker . . . de ri . şî ta Saz

bi . hîş . kûn . . . ba hîş . ta

ba hî şî kûn . . . bi hî . şî ta Saz

çi . zi bi dih . . . der viş . ta

Teş . ri fi dih . . . uş şak ta .

pür . nûr . kûn . . . a fak . ta

ber zelt ri zen . . . tir . yak . ta Saz

çi . zi bi dih . . . der viş . ta

yâ ri ma dil da ri ma . . . a li mi es ta ri ma

yu su fu di da ri ma . . . revna kî ba za ri ma

hey yi hey . . . hey dost . . . pi ri men ca ra ni men

ger be bos tan ba tû im har şûd gûl . za ri ma

ver be zin den ba tû im . . gûl bi ru yed ha ri ma

Hey yi yâr . . hey dost . . pi ri men ca na ni men

ger de ra teş ba tû im nur ker ded na ri ma

ver be cen net bi tû im . . nar şûd en va ri ma

hey yi yâr . . hey dost . . pi ri men ca na ni men

Ah bi ya kem ru zi ma ra ru zi i ba dest
Ah ze hi meclis ki sa ki bah ti ba şed

ah e zin pes i şû is ret ber me zi . . dest
ah ha ri fa neş cû ney dû ba ye zi dest

hey yi hey hey hey yâr . . ya ri ya ri men
" " " " " " " " " "

İkinci Selâm

Evfer.

Ah . . . sul . . . tâ . . . ni . . . me ni . . .
Ah der men bi de mi

ni . . . sul . . . tâ . . . ni . . . me . . . ni . . .
mi men zin de şe vem

ah . . . en . . . der . . . di . . . lû can . . .
ah yek can ci şe ved

Can . . . sad . . . ma . . . ni . . . meni . . .
 ured . . . ce . . . ni . . . meni . . .

ah . . . i . . . ma . . . ni . . . meni . . .

Ah rin da den se la
 Ah ey sek sek Hu sa

Saz
 me ti mi . . . kü ned
 med. di . . . ni ma

Saz
 can ta ta gu la
 ey fa fa ri cu

la cum . . . met. mi . . . kü ned
 saz . . . le E Ev . . . ya

mes ti ti zi ca
 Ey e ez tü ca

ca . . . met . . . mi . . . kü ned
 can ha a a si na

ah . . . mes . tan . . . se la
 ah " " " "

la . . . met . mi . . . kü ned
 " " " "

Ucuncu Selam

Frenkcin
 12/2
 Sa la . . . can ha yi . . . mus . ta . kan . . .

ki . yek dil . dā . . . ri . . kub . ā . med

cū zer . . kū . bes . . . ti . . an dil . ber

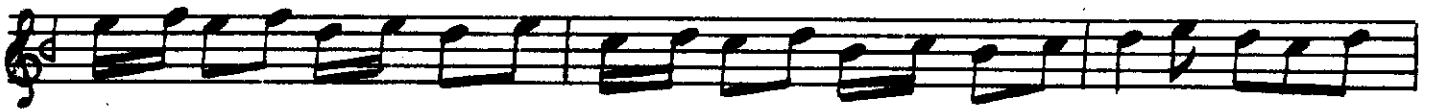
rū hi . . men si mi . . kub . ā . . med

da lā had . di ni ya . ku . ban

ce va hir bah şı ze ri ku . ban

ki o . . . hur . şı di . . . es ra . res . .

tū . Al la . mül gu yub ā med
Terennüm.



ten di zi şem sel hak ki teb ri zi ci di did güf

tim kez an nür . be ma in na zar üf

tad yā ri men yār ah yā ri men yār

yār . . . yār . . . yār yār yā ri men

yā ri me ra ah yā ri men yā ri me ra

da yā ri men vay Be hak ki an ki de rin dıl

be cuz ve lā yi tū nist Ve li i o ne şevemkū

zi ey . . . li ya yi yi tū nist Me bād ca

nembi . . . gam e ger fe da yi tū nist me bād . çeş

memtū . . . şen e ger . . . şı fa yi tū nist
Terennüm.



Dördüncü Selâm.

Evfer.

Ah
Ah

sul der men ni bi meri de mi

ni mi sul men ta zin ni de me ni vem

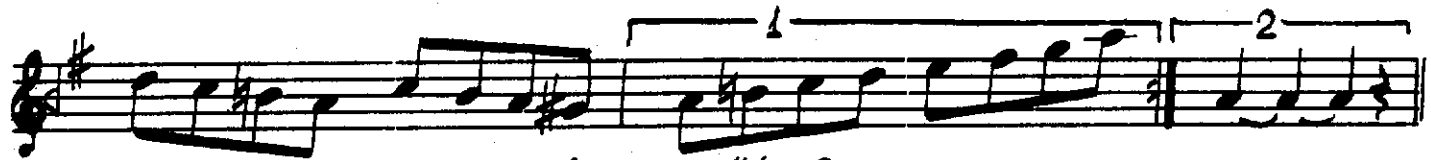
Ah
Ah

en yek der can di çi lü can şe ved

can ved i sad ma ni meri men

Ah i ma ni me ni

Çatırbuselik Ton Pesrevi, Rıza Efendi



Gon yürük Semâi.

