

A. Y. $\text{♩} = 114$
Circum Dük

MUHAYYER KÜRDİ ŞARKI

Besta: ALAËDDIN YAVRSCA

Güfte: İLKAN SAN

around/duyet

Handwritten musical notation for the first staff of the 'Lullaby' exercise. The staff is in G major (one sharp) and 3/4 time. The melody consists of eighth and quarter notes with slurs and ties.

ES_Kİ_DEN MEV_SİM_LER BÖY_LE DE_ĞİL_Dİ

BA_HA_RIN VE_YA_ZIN A_DI KAL_ MA_

Handwritten musical notation for the first staff of 'The Rose Tree'. The staff is in treble clef with a key signature of one sharp (F#). The melody begins with a quarter note G4, followed by a quarter note A4, and then a quarter note B4. A bracket labeled 'SAZ' spans the first three notes. The melody continues with a quarter note G4, a quarter note F#4, a quarter note E4, and a quarter note D4. The staff ends with a double bar line.

DI NE_RE DE MEC_NUN - LAR NE_RE DE

LEY- LĀ- LAR SEV- GĪ- NIN VE AŞ- KIN

[illegible]

TA_DI KAL_ MA_DI

TA DI KARL MA DI

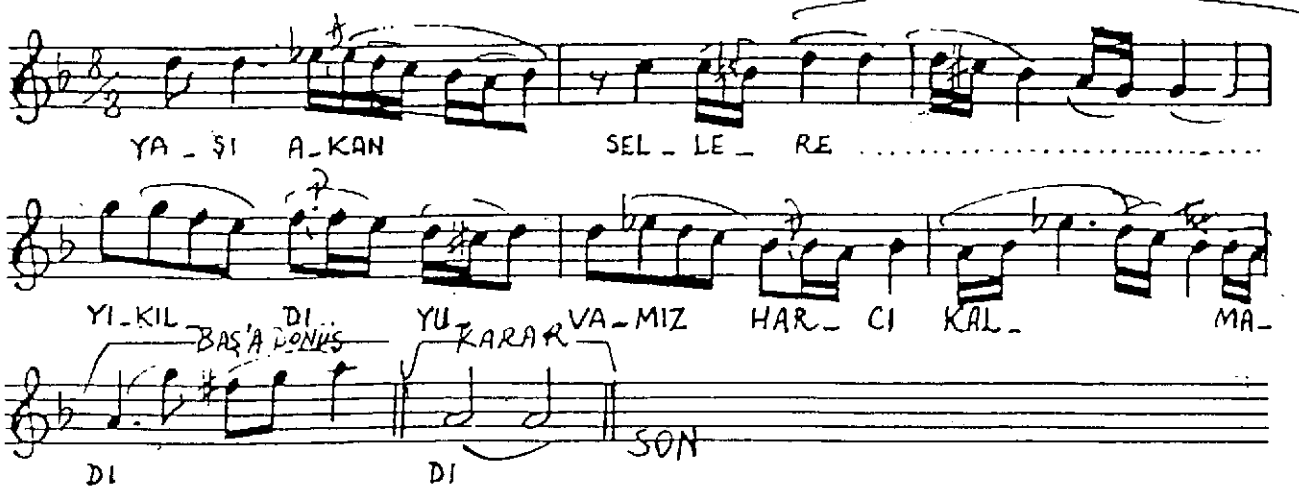
Üçüç 110



BÜL-BÜL-LEK KÖN-MÜ-YOR AR-TIK GÜL-LE-RE...

BA-ĞI-MIZ BAŦ-ÇE-MİZ DÖN-DÜ

ÇÖL - LE - RE BENZERKEN GÖZ



ESKİDEN MEVSİMLER BÖYLE DEĞİLDİ
BAHARIN VE YAZIN ADI KALMADI
 NEREDE MECNUNLAR NEREDE LEYLALAR
 SEVGİNİN VE AŞKIN TADI KALMADI

GEÇMİŞİ ARİYOR MAH ZUN GÖNÜLLER
DOĞRUYU SÖYLEYEN DİLLER KALMADI
 AŞKIN MIZRABI SAZI DEĞİŞTİ
 DOSTLUĞA UZANAN ELLER KALMADI

NARARAT
BÜLBÜLLER KUNUYOR ARNIK GÜLLERE
 BAĞIMIZ BAHÇEMİZ DÖNDÜ ÇÖLLERE
 BENZERKEN GÖZ YAŞI AKAN SELLERE
YIKULDI YUVAMIZ HARCI KALMADI

SESTE TARİHİ 15.7.1994 ENERJİKAR
 ATAKÖY