

EZÂN-I MUHAMMEDÎ

(Tenor solo ve erkekler korusu için)

Makamı : Hüseyinîaşiran

Usulü : Türk aksağı

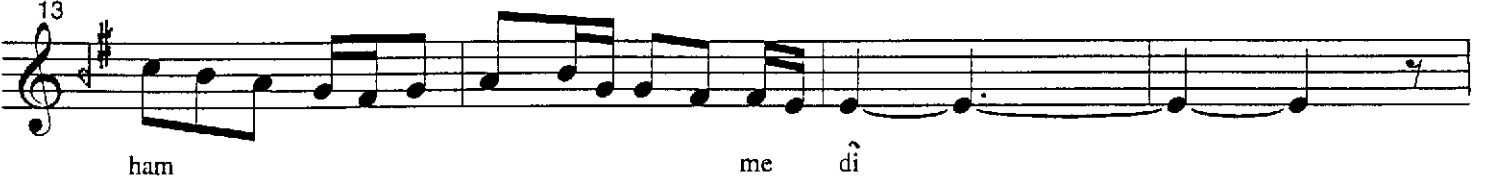
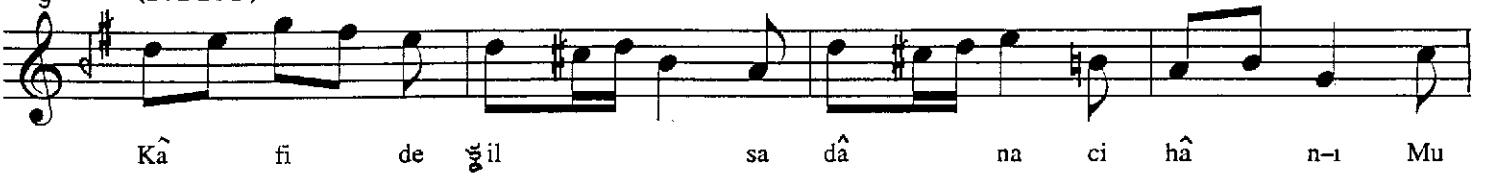
Şiir : Yahya Kemal BEYATLI

Müzik : Ruhi AYANGİL

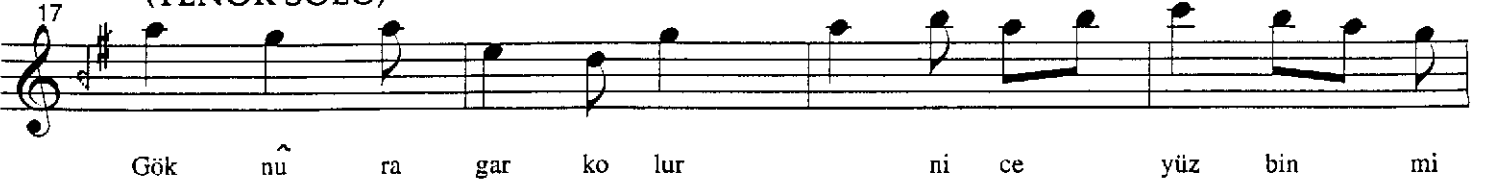
(TENOR SOLO)



(KORO)



(TENOR SOLO)



29 

33 (KORO)

Şeh bâl a çın ca rû h-î re vâ n-ı Mu

The image shows a musical score for a chorus. It is written on a single staff with a treble clef and a key signature of one sharp (F#). The melody consists of several measures, with lyrics written below the notes. The lyrics are: 'Şeh bâl a çın ca rû h-î re vâ n-ı Mu'. The notes are mostly eighth and sixteenth notes, with some rests. The key signature is one sharp (F#).

37 

41 (TENOR SOLO)

Er vâh cüm le ten gö rür Al

49  (KORO)
ek be ri, Al la

53 

(TENOR SOLO)

3



(KORO)



(TENOR SOLO)



(BİRLİKTE)

