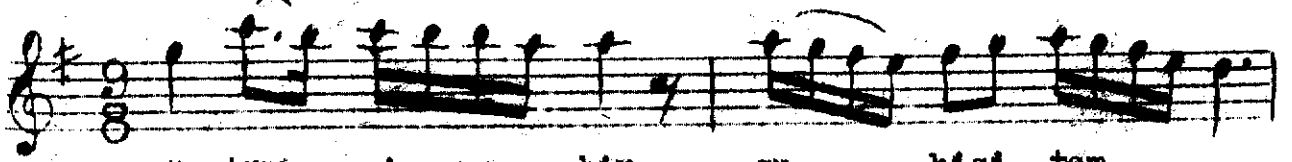
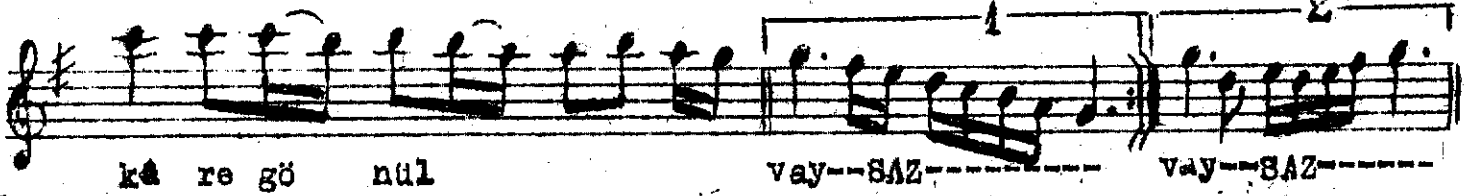


(Düştün yine bir şuh-ı)



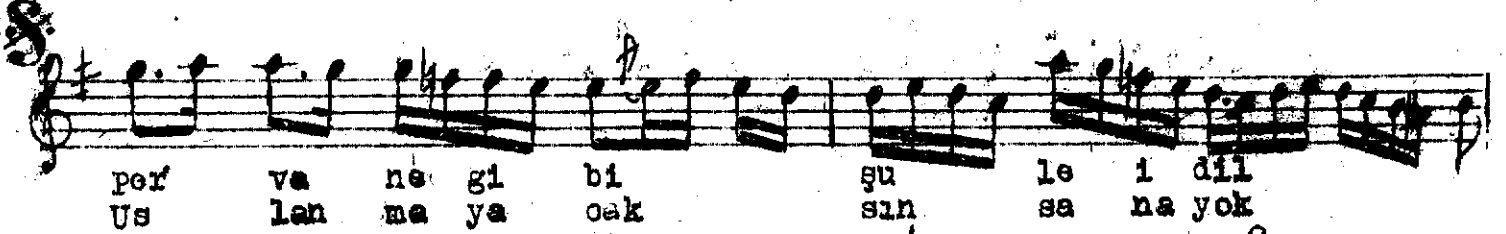
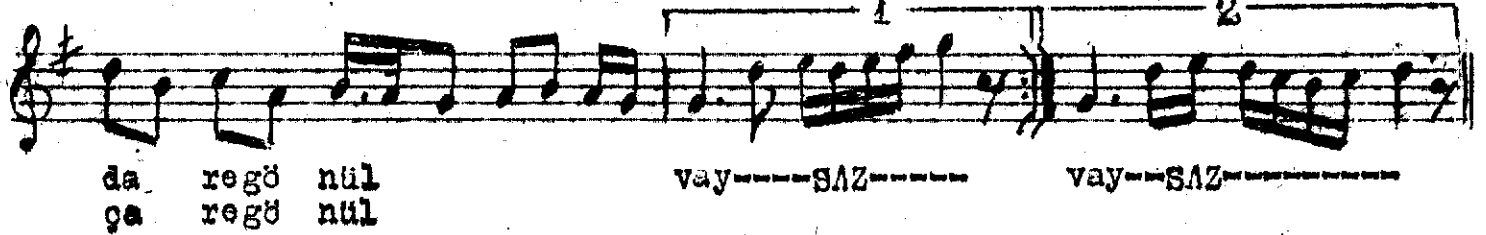
Düş tün yi ne bir şu hisi tem



kâ re gö nül

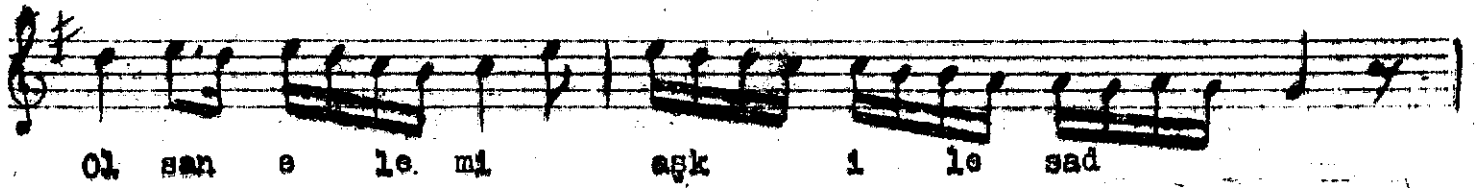
vay--SAZ--

vay--SAZ--

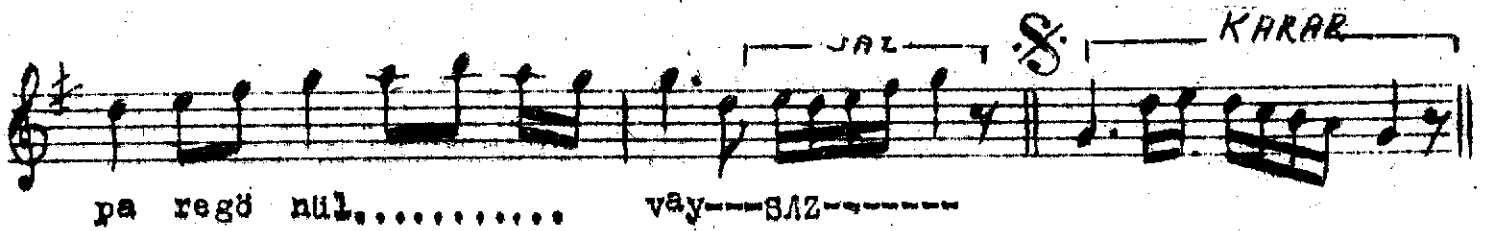
per' va ne gi bi şu le i dil
Us lan ma ya oak sin sa na yokda regö nül
ça regö nül

vay--SAZ--

vay--SAZ--

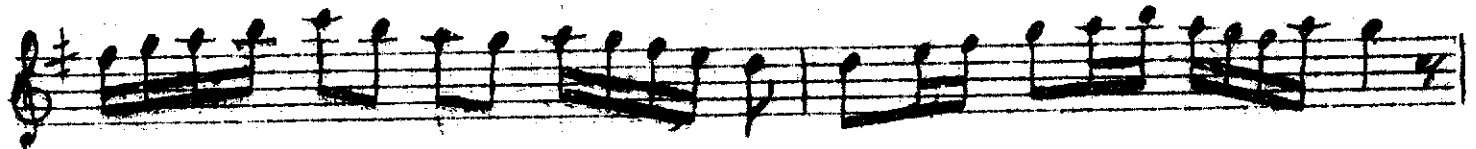


Ol san e le mi aşk i le sad



pa regö nül.....

vay--SAZ--



A r a n a ş m e



Düştün yine bir şuh-ı sitemkâre gönül vay

pervane gibi şule-i dildare gönül vay

Ol san elem-i aşk ile sad pâre gönül vay

Uslanmayacaksın sana yok çâre gönül vay.