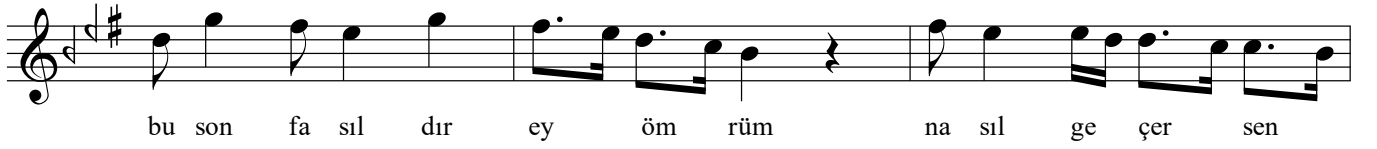
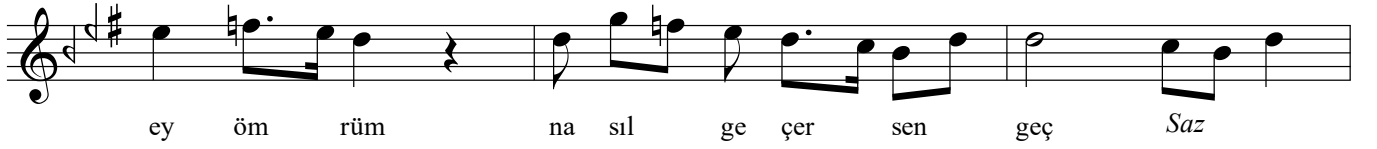
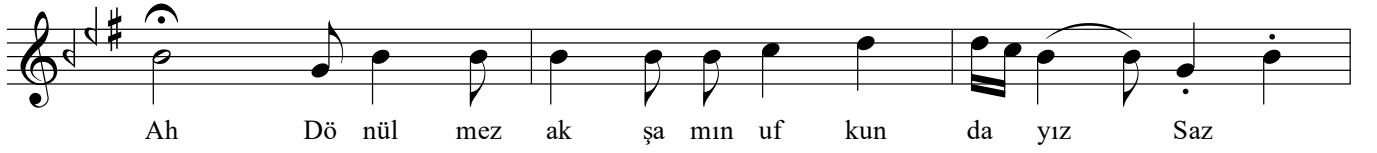


Segâh Şarkı

Rindlerin Akşamı

Usûlü: Düyek

Beste: Münir Nureddin Selçuk
Güfte: Yahya Kemal Beyatlı



Segâh Şarkı



gel mek ha yal e dil se bi le Saz



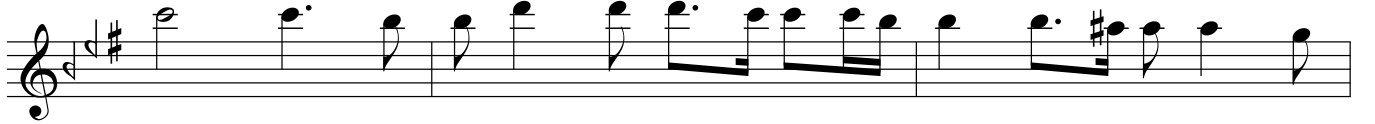
A vun mak is te me yiz Saz Böy le bir te



sel liy le Saz



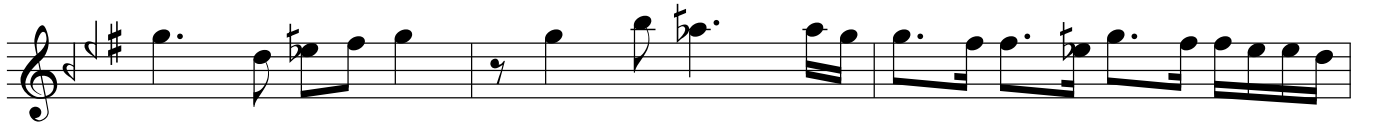
Ah ge niş ka nat la rı boş luk ta sim si yah a çı



lan ve ar ka sın da gü neş doğ ma yan



bü yük ka pı dan Saz Ge çin ce baş la ya



cak Saz bit me yen sü kûn lu ge



ce Saz Gu ru ba kar şı bu son bah çe ler de

Segâh Şarkı

key fin ce ah Ya aşk i çin de ha râb ol

The first line of musical notation is in G major (one sharp) and 2/4 time. It contains the lyrics: dır göğ sü müz de ya hut gül Saz. The melody starts on G4, moves to A4, then B4, and continues with eighth and sixteenth notes.

da yız Saz va kit çok geç