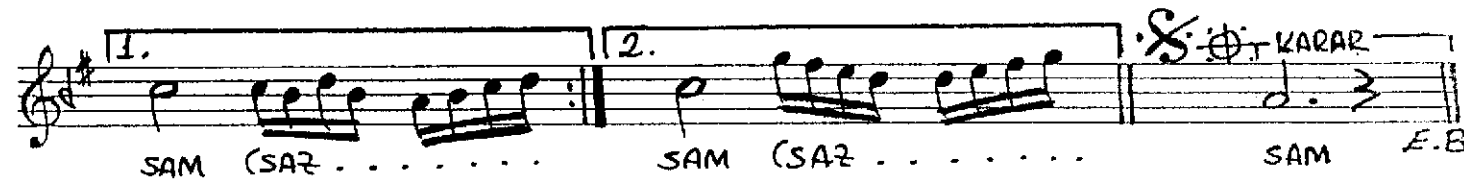
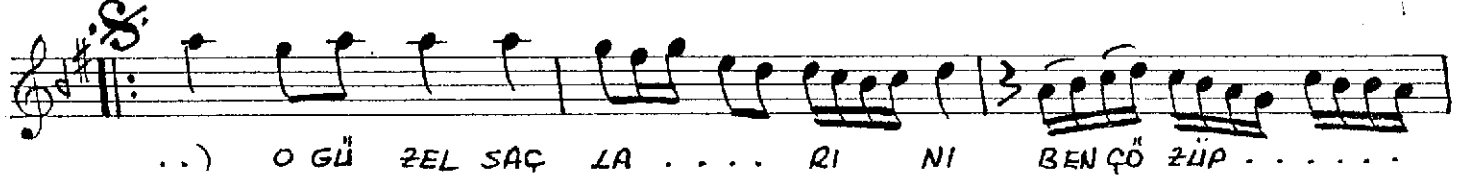
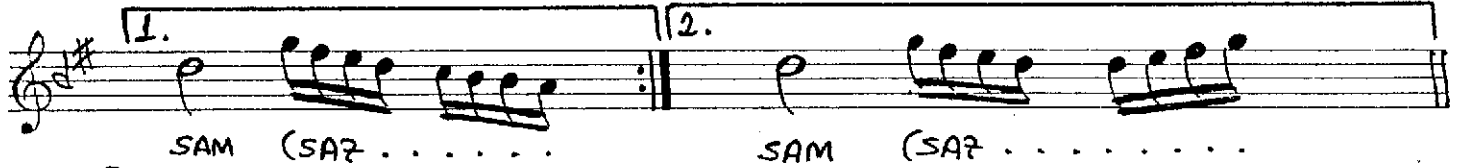
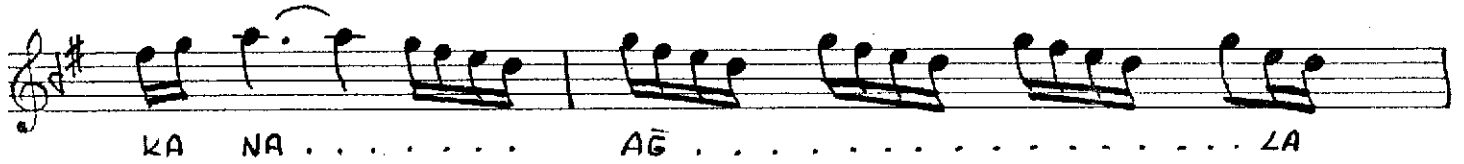
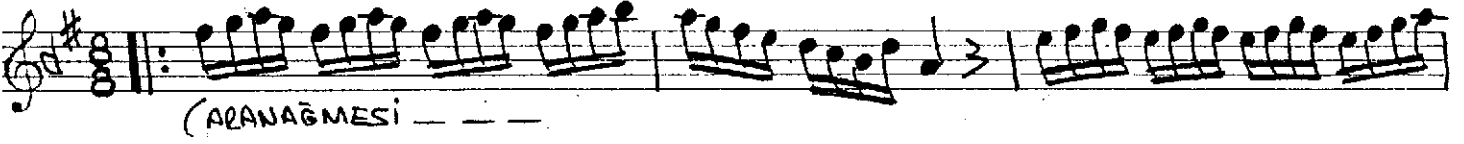


DÜYEK

TANIR ŞARKI
(Dizlerine kapansam)

SADETTİN KAYNAK



DİZLERİNE KAPANSAM KANA KANA AĞLASAM
O GÜZEL SAÇLARINI BEN ÇÖRÜP BEN BAĞLASAM
BAŞKA BİR ZEUK İSTEMEM YANINDA SARAYLASAM

20.01.1990

S D D