

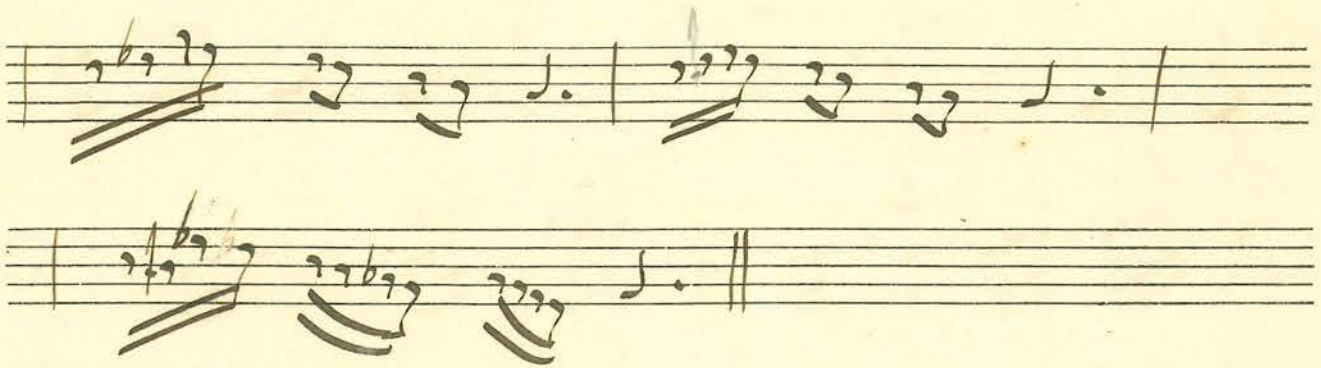
Dinle sögüm ey dileruha

Alemasiran'a
KongitaderSerk efga Sarki
سود افند

(33)

Handwritten musical score for a song. The score is written on ten staves. The first staff begins with a treble clef and a key signature of one flat. The music is written in a style that combines Western notation with traditional Turkish notation. Above the staves, there are lyrics in Turkish and Persian. The lyrics include 'Dinle sögüm ey dileruha', 'Alemasiran'a Kongitader', 'Serk efga Sarki', and 'سود افند'. The score includes various musical notations such as notes, rests, and accidentals. There are also some handwritten annotations in the margins, including 'a', 'ma', 'hu', 'm', and 'a'.

TDV İSAM KTP.
Cüneyd Kosal Arşivi
No: D-90/13-1



TDV İSAM KTP.
Cüneyd Kosal Arşivi
No: D-90/13-2