

Süre: 3/4"

(♩ = 64)

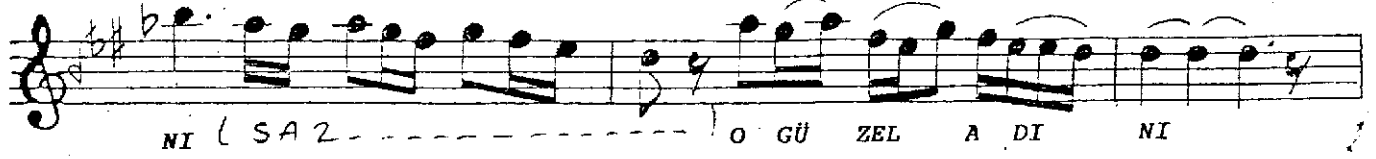
USÛLÜ: SOFYAN

KARCIÇAR ŞARKI

-DİLİMDEN DÜŞÜRMEM O GÜZEL ADINI-

MÜZİK: SİBEL ÜZREK TAŞ

SÖZ : ŞAHİN ÇANÇAL



The image shows a musical score for a song, written in staff notation. The music is in 4/4 time, with a key signature of one sharp (F#). The melody is written on a single staff. The lyrics are in Turkish and are written below the staff. The lyrics are: SÖN MEZ GÖN LÜM DE Kİ SEV DA MIN YAN GI NI -SAZ- SEV DA MIN YAN GI NI. The word 'SAZ' is written with a dashed line underneath it, indicating a long note or a pause. The word 'LÜM' is written with a dot underneath it, indicating a long note. The word 'Kİ' is written with a dot underneath it, indicating a long note. The word 'SEV' is written with a dot underneath it, indicating a long note. The word 'DA' is written with a dot underneath it, indicating a long note. The word 'MIN' is written with a dot underneath it, indicating a long note. The word 'YAN' is written with a dot underneath it, indicating a long note. The word 'GI' is written with a dot underneath it, indicating a long note. The word 'NI' is written with a dot underneath it, indicating a long note. The word 'SAZ' is written with a dashed line underneath it, indicating a long note or a pause. The word 'SEV' is written with a dot underneath it, indicating a long note. The word 'DA' is written with a dot underneath it, indicating a long note. The word 'MIN' is written with a dot underneath it, indicating a long note. The word 'YAN' is written with a dot underneath it, indicating a long note. The word 'GI' is written with a dot underneath it, indicating a long note. The word 'NI' is written with a dot underneath it, indicating a long note.

SÖN MEZ GÖN LÜM DE Kİ SEV DA MIN YAN
GI NI -SAZ- SEV DA MIN YAN GI NI

DİLİMDEN DÜŞÜRMEYİ O GÜZEL ADINI
AÇTIM YALNIZ SANA ŞU GÖNÜL KAPIMI
SÖNMEZ GÖNLÜMDEKİ SEVDÂNIN YANGINI
AÇTIM YALNIZ SANA ŞU GÖNÜL KAPIMI