

SÖZİDİLARA PEŞREVİ

Devr-i kebir

Sultan Üçüncü Selim

28

4

Teslim.

2. Hane

3. Hane

Nol: Üçüncü haneden sonra, ikinci hanenin başına geçilecek, ikinci hane teslimle beraber çalmak suretile Peşrev tamamlanmış olacaktır.

Devr-i kebîr

(2) 

Hey . . . yâr . . . dîl be ri uû  
hâ ri hâ ri

bi mas . . . dî li . . . es . . . rā . . . ri  
mā çûn o yā ri

māst . . . māst . . . hey . . . yâr . . .

hey . . . dost . . . yâr pi . . . ri  
" " " "

men . . . hey . . . yâr

Nev be ti . . . köh ne fû ru şan . . .

der . . . gü zēst . . .

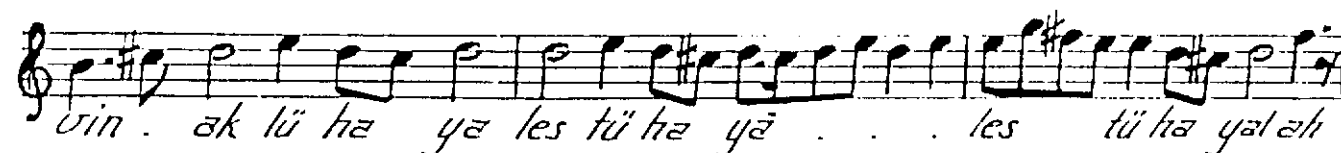
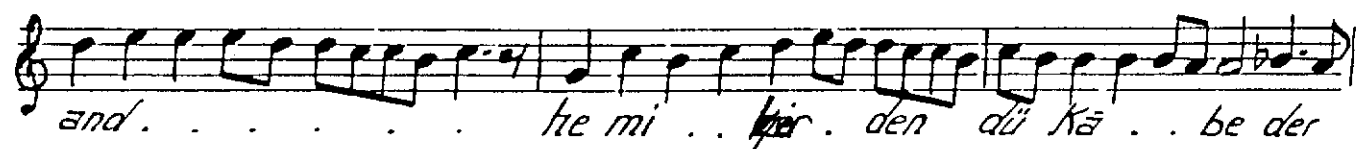
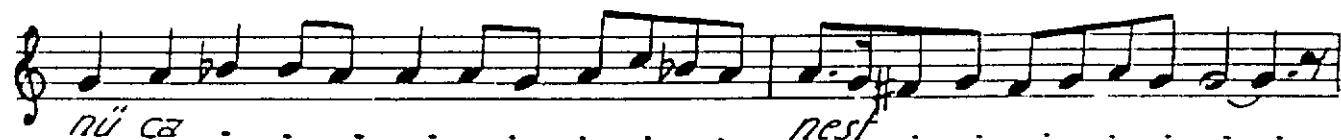
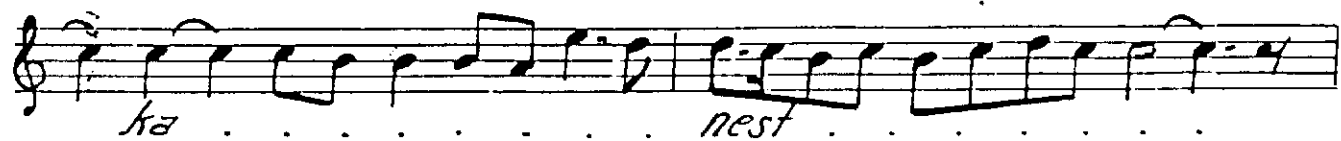
hey . . . yâr hey dost yâr pi . . . ri

me . . . hey . . . yâr

nev fû ru şā . . . ni . . . mû in bā

zā . . . ri māst . . .

hey . . . yâr . . . hey . . . dost



(4)

Çün . ben de ne i ni da yi sa .  
 Çün ez ho du gay ri hod mü sel

hi . mi . . zen ah Ti . ri na za ren .  
 lem keş fi ah Bi . hod bi ni şin

cü nan ki ha . . . hi . mi . zen . ah  
 'kâ si i lâ hi mi zen ah

Hey hey hey hey hey hey . . . dost . . .

dost . . . ih san me ded . . gufran me ded . .

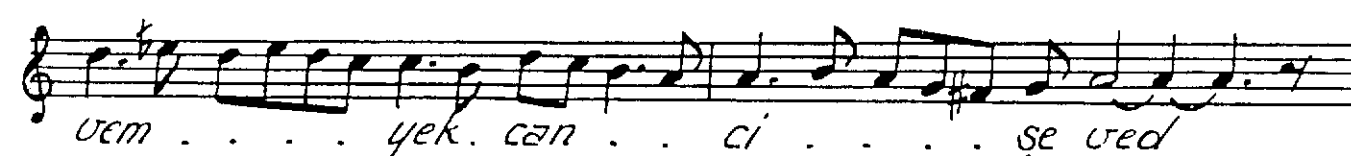
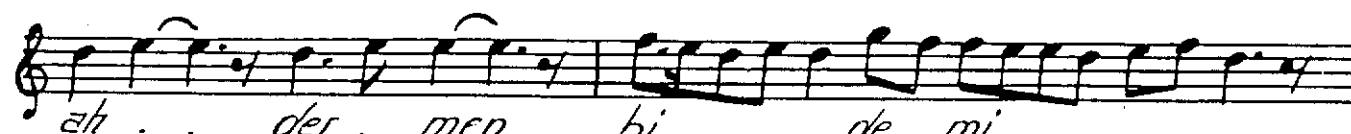
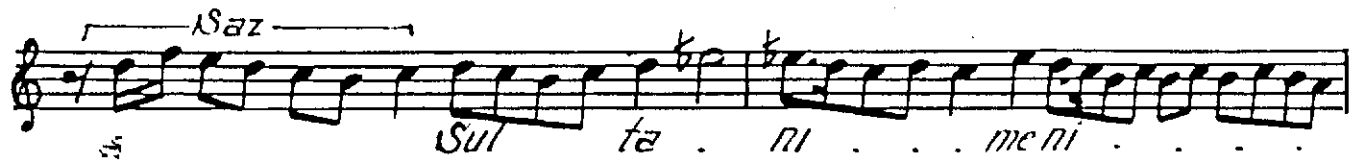
yar . . . yâr . . . yâr yâr . yâ . . ri men . . .  
 Terennüm.

E. BİNGÖL

# "İkinci Selâm."

(5)

Evfer.



Terennüm.





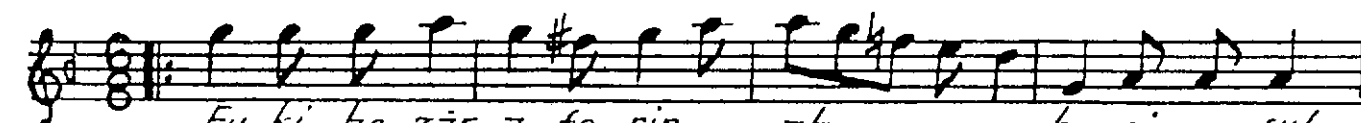
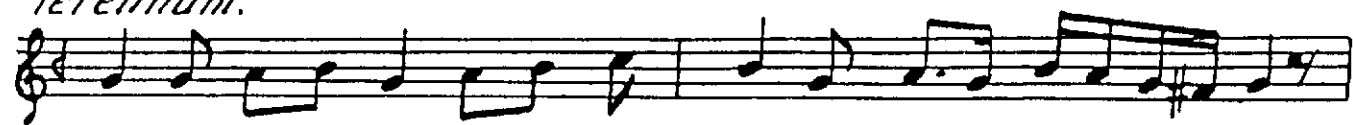
## Üçüncü Selâm

Frenkçin

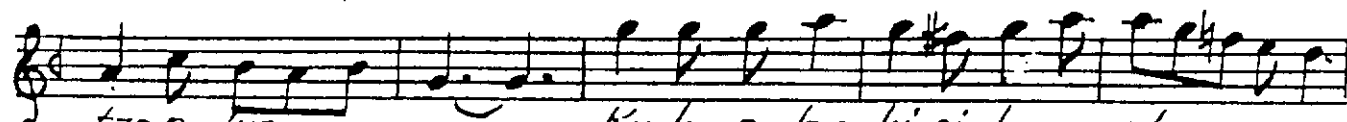




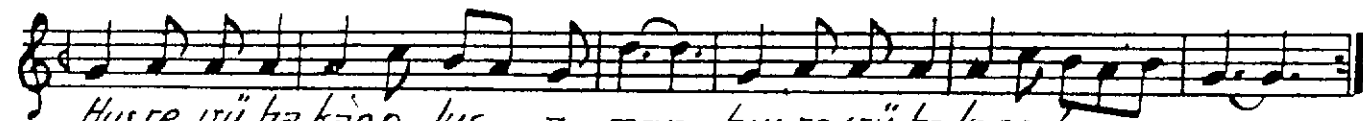
*Terennüm.*



*Ey ki he zâr a fe rin . ah . . . bu ni ce sul  
Her ki bu gün ve le de ah i na nu ben*

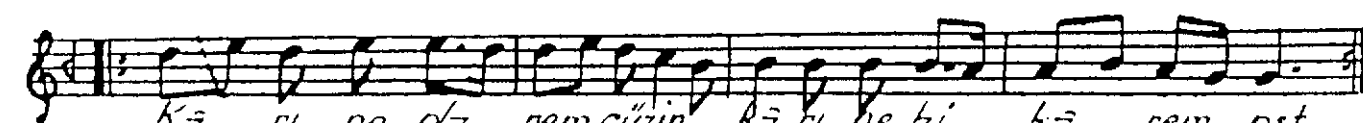


*tan o lur . . . Ku li o lan ki si ler . ah . . .  
yüz sü re yok sul i se bay o lur ah*



*Hus re vü ha ka no lur a man hus re vü ha ka no lur . . .  
Bay i se sul tan o lur a man bay i se sul tan o lur*

*Terennüm.*



*Kā ri ne da rem cūzin . Kā ri ye hi . Kā rem ost  
lā fi ze nem lā fū lāf zan ki hi ri da rem ost*

Câ nû di lem sa kî nest cûn ki di li câ nem ost

Kâ fi le em ey me nest. kâ fi le sa lâ rem ost . . .

*Terennüm.*

Hız ki im ru zi ci han a ni mast Zühre ümehdîzeni sa  
Câ nû ci han sa kî i mih na ni mast

di i mast bûl bû li can mest gü lis ta ni mast . . .

. . . Ah gü ze lin aş kî na ha lâ tî na . . . a manyendiyûrek

aş kî na ra tî na . . . ah and i çe yim gayrî güzel

sevmeyim . . . ah Tâ n rî ye vü Tâ n rî nin a ya tî na . . .

*Terennüm.*

*Ey*

kâ şî fi es ra rî hu de Mev lâ na sul ta nî fe na

şâ hî be kâ Mev lâ na . . . na aş k it me de dir



hazre ti ne böyle hi táb . . . . . mevlâ yi gû ru

hi ev li ya Mev lâ - na mev lâ yi gũ ru

Hi ev li ya Mev lā . na . . . Dördüncü Selâm

Evfer.

Ph . . . sul . ta . . . ni me . ni . . .

*Saz*  
sul ta ni . . . menl . . .

ni . . . en der ah di . . . lü can . . .

Can i ma ni me ni

ah . . . der . men bi . . . de mi . . . . .

mi men zin de se vem

ven . . . . . vek can . . . . . se ved . . . . .

ved . . . . . sãd# cã . . . . . ni . . . . . meni#

ah . . . i . . . ma . . ni . . . meni . . .

„Gon Peşrev..“



„Gon Yürük Semai“

