

BESTE İSFAHAN

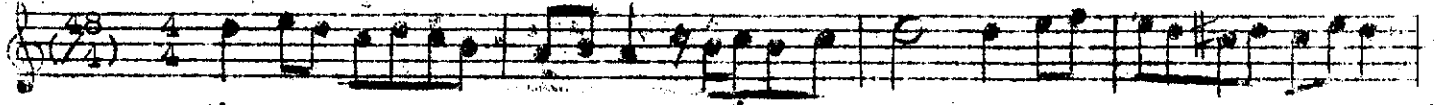
B İ R İ N Q İ

B E S T E

Usulü: Ağır Çenber

Bestekârı: ENFİ HASAN AĞA

$\text{♩} = 72$



Ah

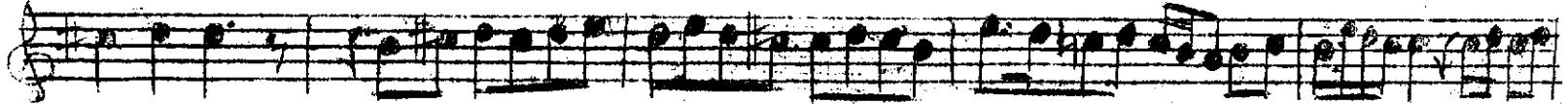
dil ki şen



ru

hi

oe

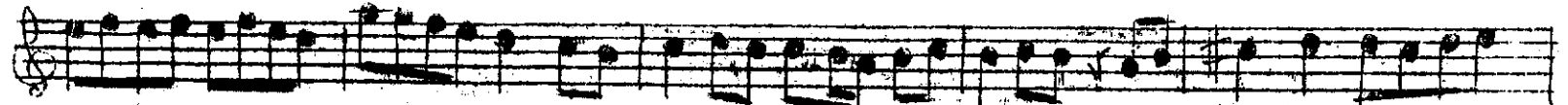


ne

ne

ah

o la



per

va

ne



yar

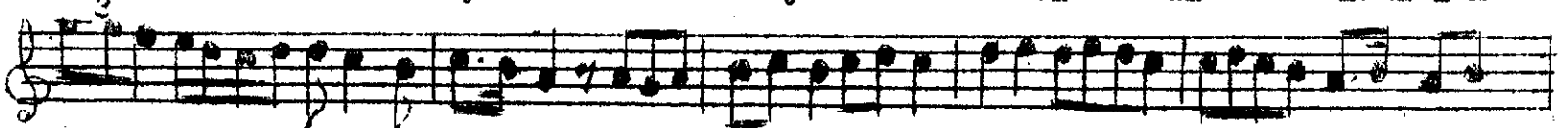
ey

ön

rüm

a

mana man



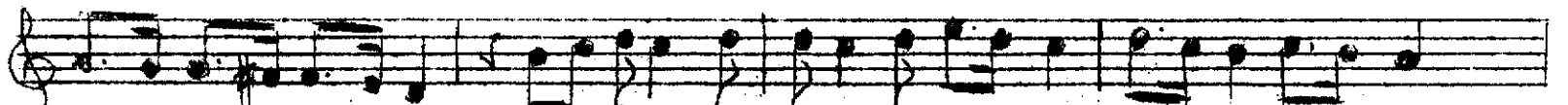
of

yar

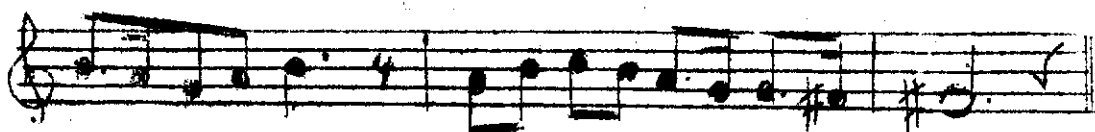
o la

per

va



ne

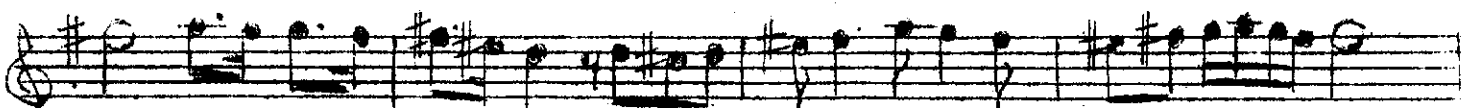


yar

a

man

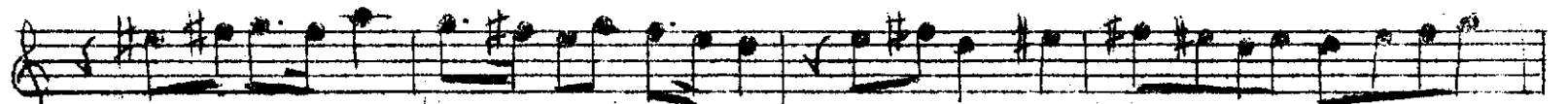
M İ Y A N:



Ah

öl dü rür

a



şı

kı

bağ



rın

da

SİNE KEMANİ

NURİ DUYGUCU

ARMAĞANI

(Lütfen sahifeyi geviriniz)

2.A

imzı Kad

ah yar o lan ya

re le ri

yar ey öm rüm a man a man

of yar yar o lan ya

re le

ri yar a man

DİL Kİ ŞEVA'İ RUH - İ CÂNÂNE OLA PERVANE
 ATEŞ-İ AŞKINLA YANMAKTA ONA PERVANE
 ÖLDÜRÜR AŞIKI BAGRINDA OLAN YARELERİ
 GİRÜP OL SENK-İ DİLİN HANÇERİ NEYLER KANE
 ÖMRÜM AMAN AMAN OF YAR OLA PERVANE