

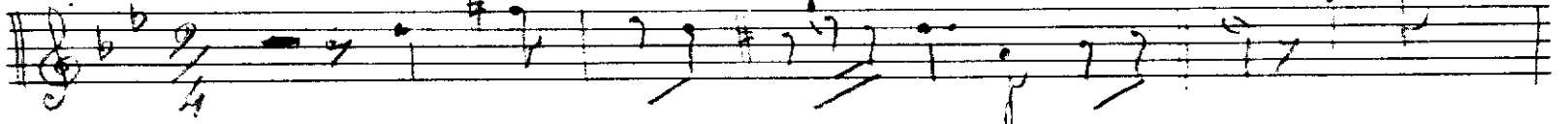
salıha - 137

S. etarabim sarbu

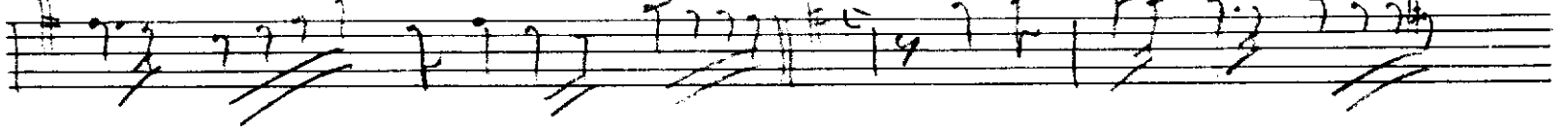
Kammi Nubar Ef

Etan üngör'de
Nubar Tokya
kaytılı

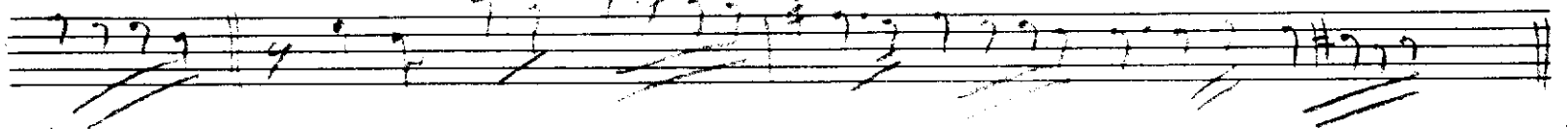
der di as kun be de



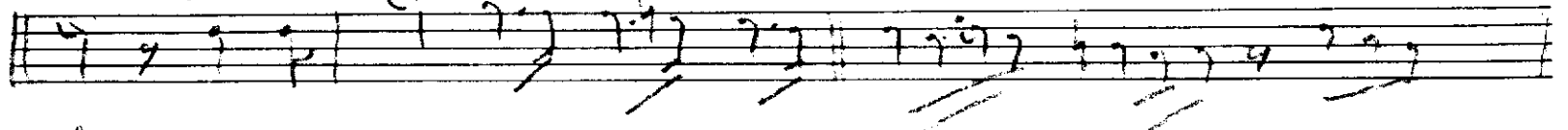
ma dem mes he nim meş



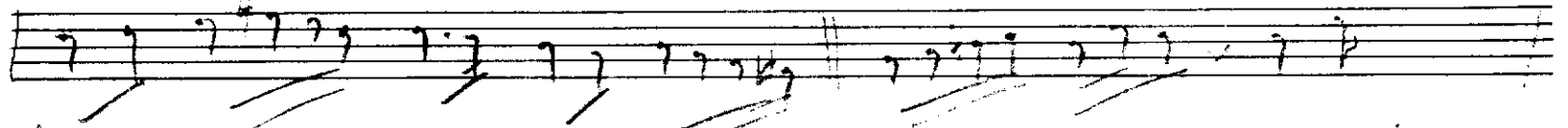
ha ne dir



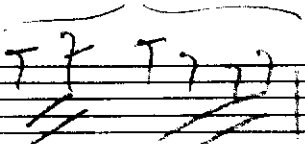
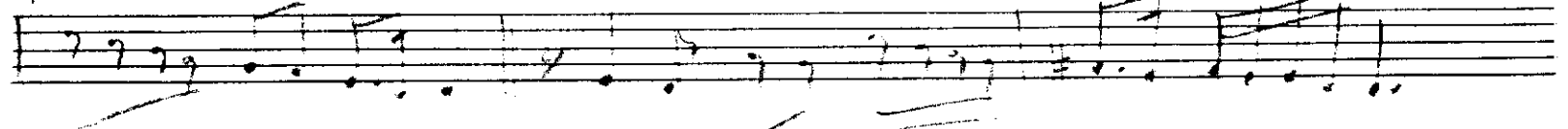
gör di yün ma muru



dil sim di te



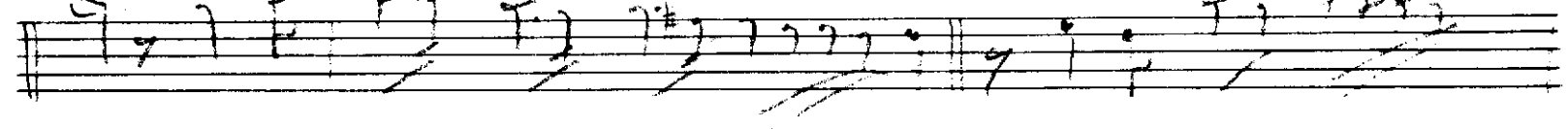
hi vi ra ne dir



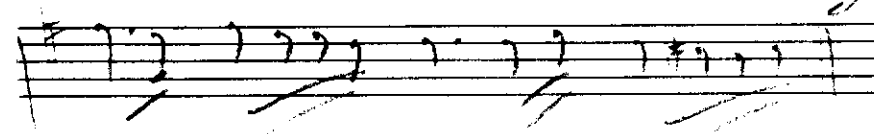
han gi dil ta hat ge tir miş



der hi as kun kun zah



me na



derdi aşkula demâden meskenim meyhânedir

gördüğün marmûru dil simdi beki vîrânedir

han gi dil tahat getirmistir ki aşkun zahannâ

ciin ki ol ahkâmı aşkun penâesi sarvânedir

17.12.1958

Merrres dem