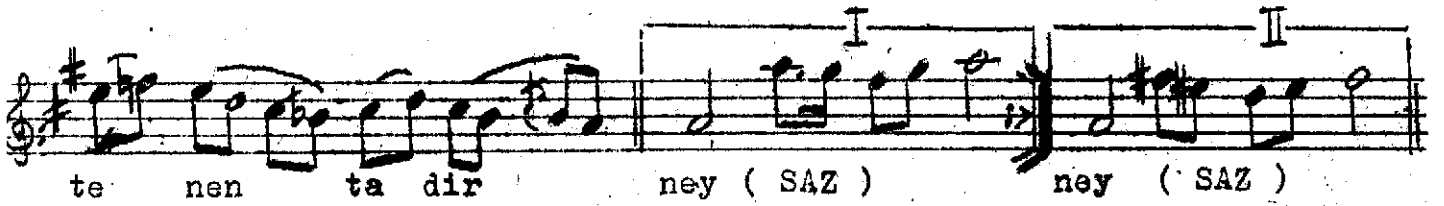
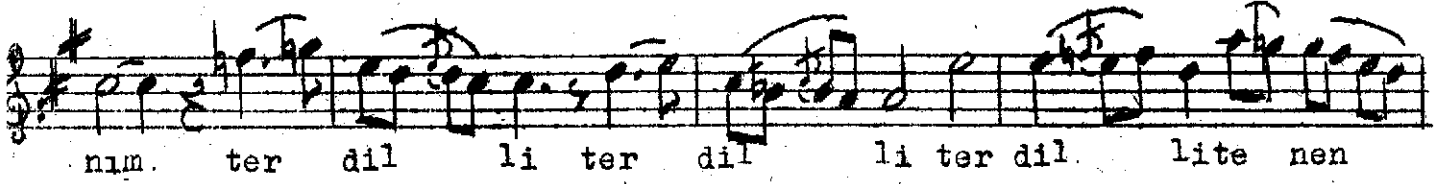
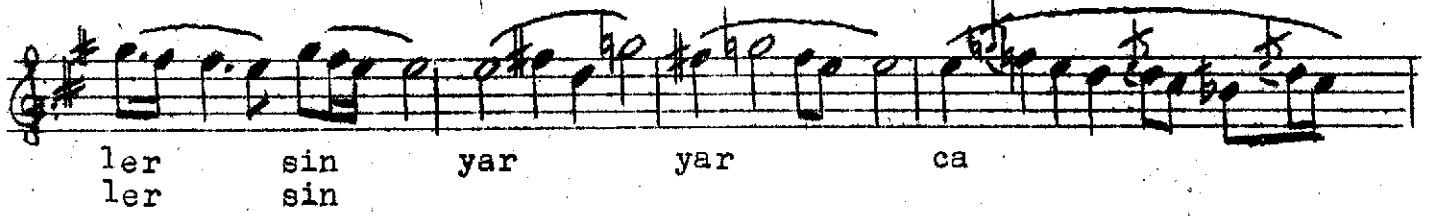


Yürük Semai

Ş E H N A Z

Dem-i visali şuha itab'ı neylersin

KARA İSMAIL AĞA



Dem-i visali o şuha itab'ı neylersin,
Nukud-u eski, nisar et hesabı neylersin,
Felekde bir gün ise görmek ey gönül kasdın,
O mah pareyi gör hesabı neylersin.

T E R E N N U M

Yar yar canım ter dilli ter dilli....