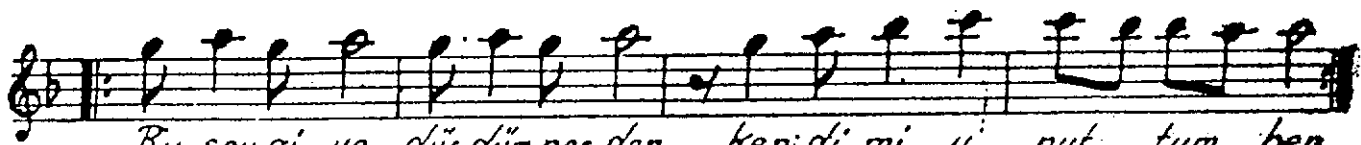
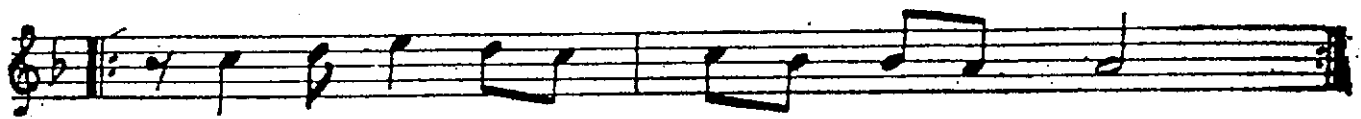


Beste ve Güfte
SUAT SAYIN

Prælude.



He-er-ge-her-se-her-die-gan-ge-lie-b-lich-keit-tiel-deu-

The first staff of music is written on a five-line staff with a treble clef. It begins with a key signature of one sharp (F#) and a common time signature (C). The melody consists of the following notes: a quarter rest, a quarter note G4, a quarter note A4, a half note B4, a quarter note C5, a quarter note B4, a quarter note A4, a quarter note G4, a quarter note F#4, a quarter note E4, and a quarter note D4. The notes are connected by a continuous line, indicating a single melodic phrase.

zā lì mìn zūl mǔ uar . . . sa . . .

1.

Bu sevgiye düřdüm nerden
Kendimi unuttum ben

Hayatımı sana verdim
Gençliğim gitti elden
Şimdi artık yalnızım
Ağlamak neye yarar

Zâlimin zulmü varsa
Sevenin Allahı var.

2.

Daha benden ayrılmadan
Başka sevgili buldun

Saadet hiç belli olmaz
Sevgilim mesutmusun

Şimdi artık.....