

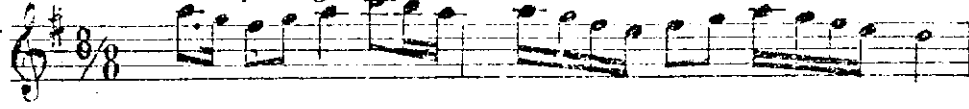
TAHİR

İLÂHÎ

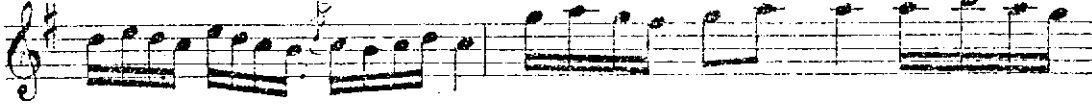
Güftesi : Ruşenî'nin
Bestesi : kimin olduğu meçhuldür.

Düyek (♩=120)

A..hiçün do ğu pu tu t du ci ha n



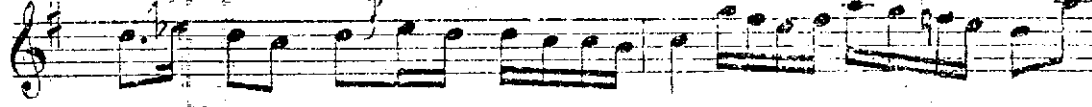
yü zü nü hü s nü n gü ne ş i



ya r ya re su la l lah kil şe fa at



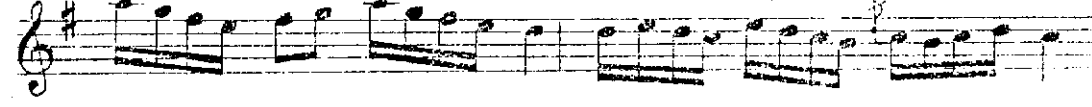
ya re su la l lah şe fa a t



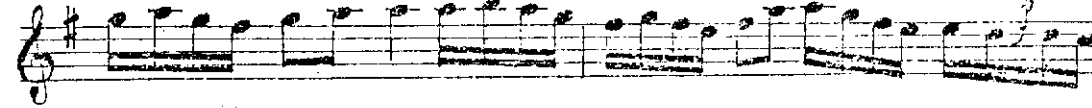
ya ha bi ba l lah ki mo la



se v me ye bu hü s ni le se n



ma hı ve ş i ya r ya re su la l



lah kil şe fa at ya re su la l



lah şe fa a t ya ha bi ba l lah (SON)

